

Cannon Hill Lane Raynes Park, SW20 9HH

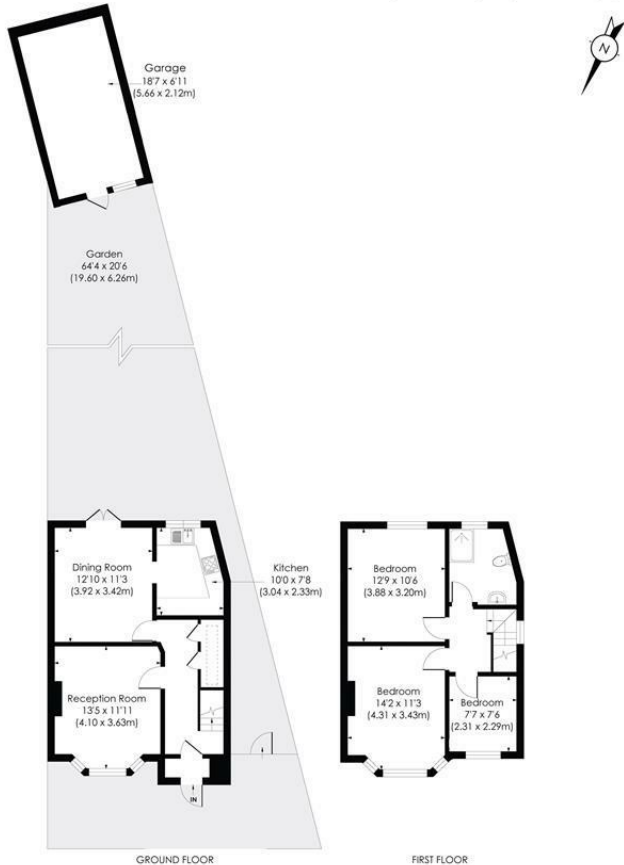
£725,000 Freehold



This neutrally decorated THREE BEDROOM un-extended 1930's End Of Terrace House has a superb 44ft South Facing Garden, useful side access and a separate garage to the rear. Located close to well regarded schools, transport options from Raynes Park and Morden and the open space of Cannon Hill Common. This is an excellent blank canvas offering exceptional potential for an incoming buyer to finish and extend to their own desired tastes S.T.P.P. No Onward Chain.

CANNON HILL LANE, SW20

Approx. Gross Internal Floor Area
1108 Sq. ft/102.96 Sq. m (Incl. Garage)
979 Sq. ft/90.96 Sq. m (Excl. Garage)

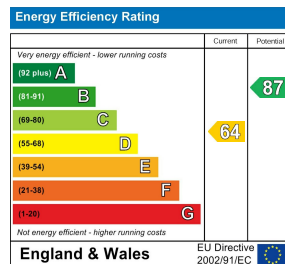


pixangle
PROPERTY MARKETING

This floor plan has been prepared for the purpose of illustration only in accordance with the latestRICS code of measuring practice and is not to scale. All measurements and areas are approximate and whilst every effort has been made to ensure the accuracy of the plan contained here, no responsibility is taken for any error, omission or misstatement.

© Pixangle Property Marketing Ltd. info@pixangle.com Tel: 0208 870 2118

- Three Bedroom 1930's End Of Terrace House
- 64'ft South Facing Garden
- Driveway and Separate Garage
- No Onward Chain
- Excellent Potential To Extend S.T.P.P
- An Ideal Blank Canvas
- Modern Kitchen and Bathroom
- EPC -C
- Council Tax Band - E



For Free Mortgage Quote and Best Mortgage Rates, call Ellisons Mortgage Advisor on 0208 543 1166



Although these particulars are believed to be correct, their accuracy is not guaranteed and they do not form part of any contract.

Celebrating 30 years of successful Sales and Lettings in Merton

