



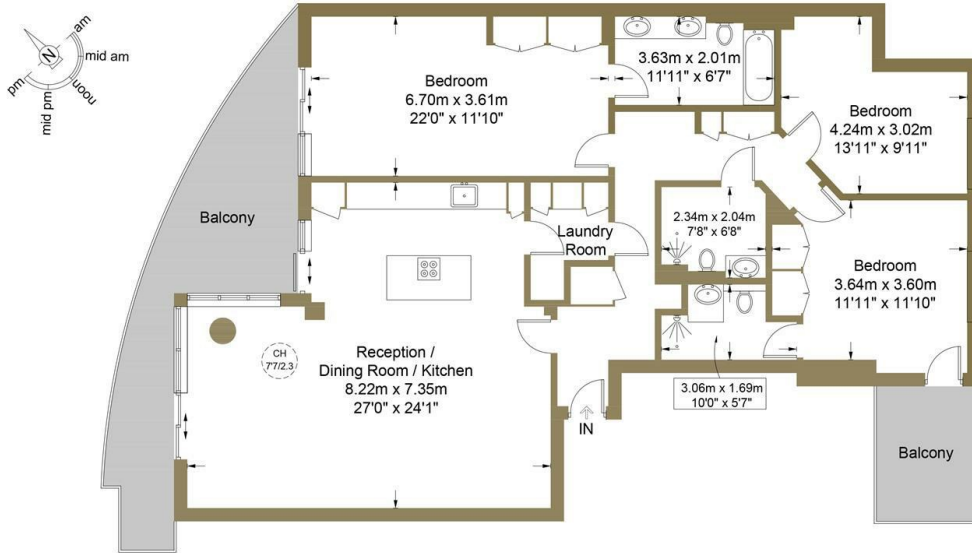
Jellicoe House, St. George Wharf, Vauxhall, London SW8 2JF

£2,200,000

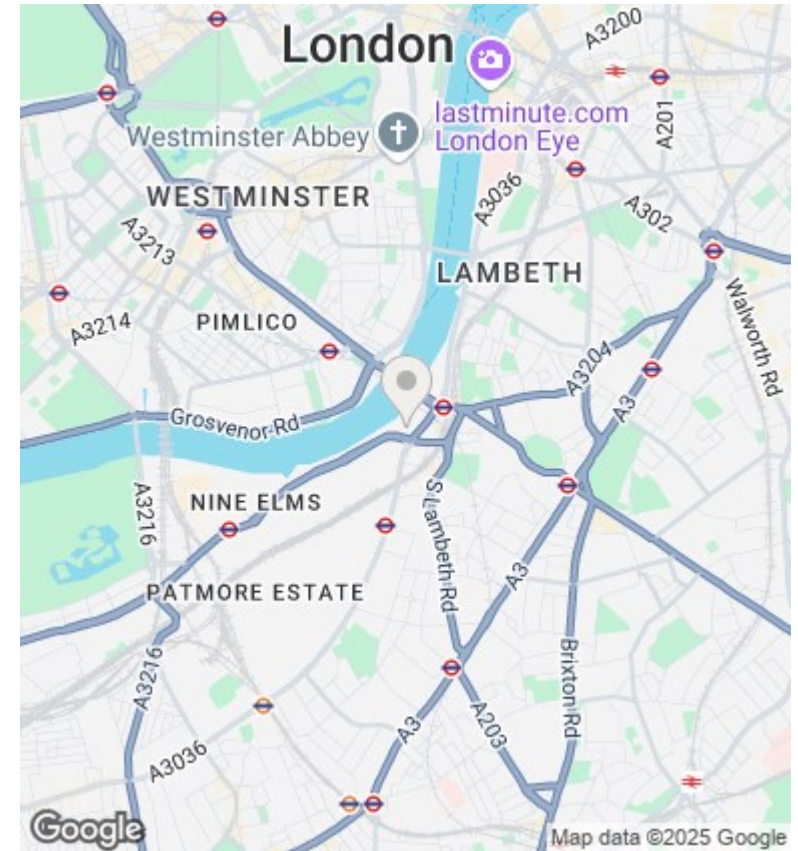
- NEWLY REFURBISHED APARTMENT
- RIVER VIEWS
- WALKING DISTANCE TO VAUXHALL TUBE STATION
- 24H CONCIERGE
- TWO PRIVATE BALCONY
- MOMENTS AWAY FROM BATTERSEA POWER STATION
- DUAL ASPECT
- 3 BEDROOMS 3 BATHROOMS

Jellicoe House, SW8

Approximate Gross Internal Area = 1568 sq ft / 145.7 sq m



This plan is for layout guidance only and is not drawn to scale unless stated. All dimensions, including windows, doors, and the Total Gross Internal Area (GIA), are approximate. For precise measurements, please consult a qualified architect or surveyor before making any decisions based on this plan.



Viewings

Viewings by arrangement only.
Call 02077225022 to make an appointment.

Council Tax Band

D

EPC Rating:

Energy Efficiency Rating		
	Current	Potential
<i>Very energy efficient - lower running costs</i>		
(92 plus) A		
(81-91) B		
(69-80) C		
(55-68) D		
(39-54) E		
(21-38) F		
(1-20) G		
<i>Not energy efficient - higher running costs</i>		
England & Wales	EU Directive 2002/91/EC	