



## Parkview Mansions, Highgate High Street, N6

**£750,000**

**Share of Freehold**



44 highgate high street, highgate village, london, n6 5hx

telephone 020 8348 8000 facsimile 020 8348 8232

email [highgate@litchfields.com](mailto:highgate@litchfields.com) web [litchfields.com](http://litchfields.com)

offices also in hampstead garden suburb



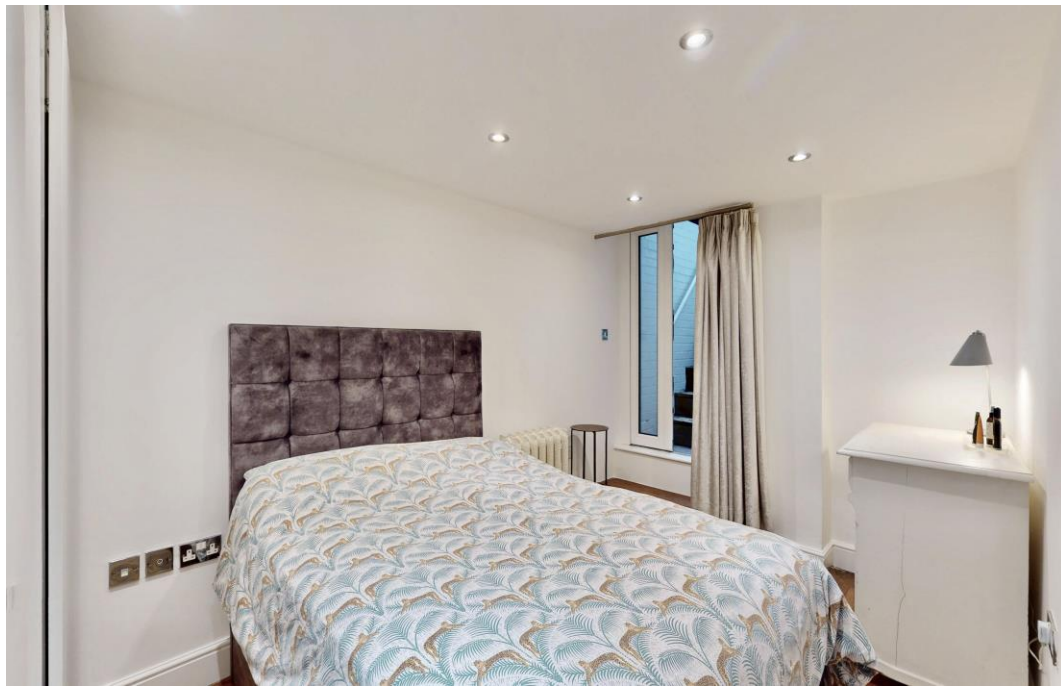


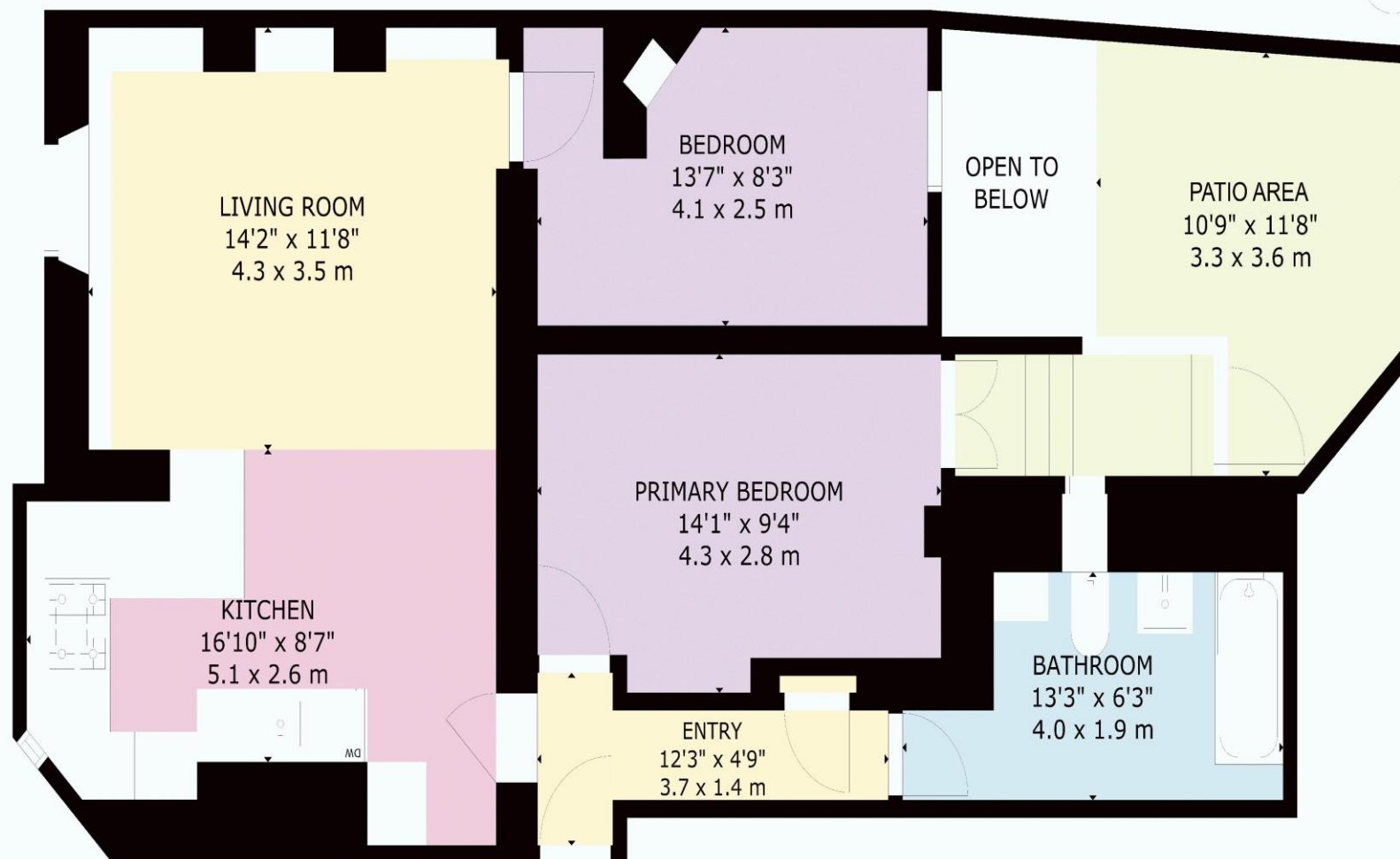
**We are pleased to offer for sale a beautifully presented 2 bedroom lower ground floor apartment within an elegant and well-maintained Edwardian mansion block in the very heart of historic Highgate Village. This stylish home features a spacious, open plan kitchen-dining and living space, 2 double bedrooms and a luxury family bathroom. There is a very useful basement storage area, bike storage in the rear courtyard and the benefit of a small patio area. Located moments away from Waterlow Park, all the amenities of the High Street and transport links to London and the City with Archway and Highgate tube stations close by. There is the additional attraction of Kenwood and Hampstead Heath as well as sought after schools on the doorstep. EPC-C**



**Edwardian Masion Block apartment**  
**Highgate Village Location**  
**Open-plan kitchen-reception**  
**2 bedrooms**  
**Family bathroom**  
**Patio area**  
**Storage basement area**  
**Courtyard bike storage**  
**Stones throw to Village amenities including shopping and Waterlow Park**  
**Close to transport links to central London and the City (Northern Line tube)**  
**EPC - C**







GROSS INTERNAL AREA  
TOTAL: 69 m<sup>2</sup>/747 sq.ft  
BASEMENT: 69 m<sup>2</sup>/747 sq.ft  
EXCLUDED AREAS: GARDEN: 9 m<sup>2</sup>/101 sq.ft  
SIZE AND DIMENSIONS ARE APPROXIMATE, ACTUAL MAY VARY

BASEMENT