



Lyttelton Court, Hampstead Garden Suburb, N2

Leasehold

£350,000



800 finchley road, hampstead garden suburb, london, nw11 7tj

telephone 020 8458 5000 facsimile 020 8209 2068

email [sales@litchfields.com](mailto:sales@litchfields.com) web [litchfields.com](http://litchfields.com)

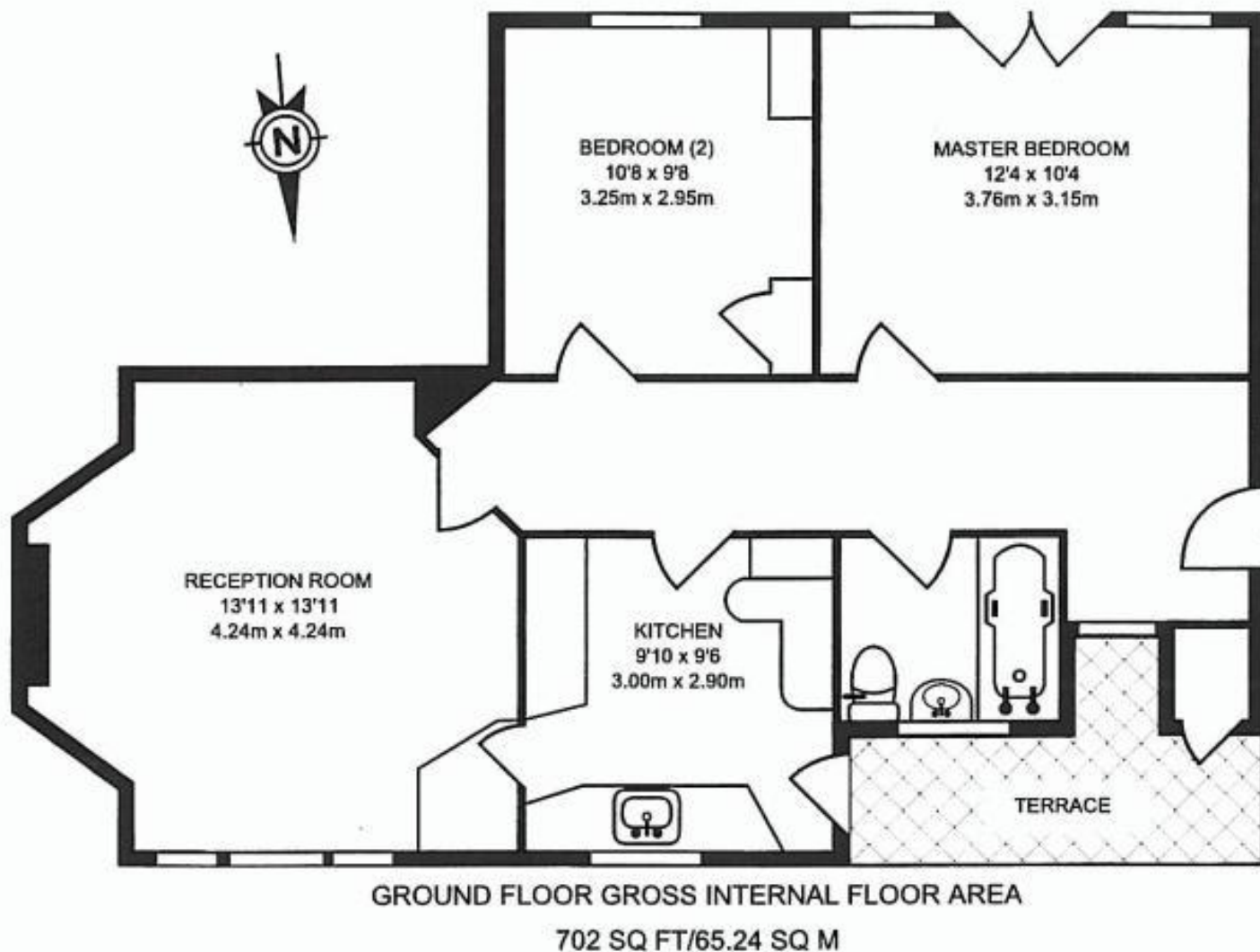
offices also in highgate

**CASH BUYERS ONLY!** (the lease is approximately 50 years unexpired). A good size 2 bedroom ground floor flat placed in this popular block situated within 0.8 miles to East Finchley Underground (Northern Line), 0.2 miles to the shops, cafes and transport links of The Market Place and 0.2 miles to Lyttleton Playing Fields. The property is presented in good decorative condition and benefits from direct access from the lounge to the communal gardens. **CASH BUYERS ONLY!**

2 bedrooms | Lounge | Kitchen | Bathroom | Communal gardens | Non allocated residents parking | EPC=TBA







Whilst every effort is made to ensure these details are accurate, all measurements given are approximate and for guidance only. We are unable to comment on the structure of the building or services and any investigations should be carried out by a qualified surveyor. We strongly advise you to ensure that all legal aspects are fully investigated by your solicitor prior to a purchase. We have not applied tests to any appliances or equipment and therefore cannot verify these are in good working order. We understand from the vendor that the fixtures and fittings listed are to be included in the sale price but these may be subject to negotiation.