



Eastbury Grove, London, W4 2JZ

£625,000

**WHITMAN & CO.**

SALES · LETTINGS · COMMERCIAL



- Light and spacious split-level apartment
- Two double beds/two baths
- Close to numerous amenities
- 844sqft of accommodation
- Excellent entertaining space
- No onward chain

Tenure - Leasehold with share of freehold  
 Lease length - 123 Years remaining  
 Ground Rent - Peppercorn  
 Service Charge - £500 pa  
 Local Authority - Hounslow  
 Council Tax - Band E

## THE PROPERTY

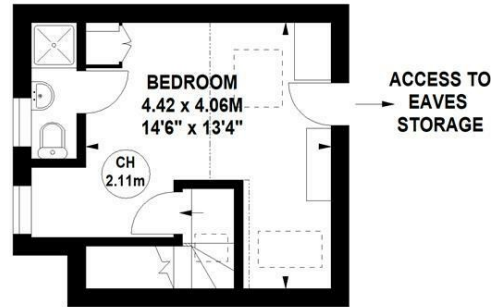
A light and spacious split-level two-bed/two-bath apartment located within a short walk of the River and Chiswick High Road's extensive facilities. Offering 844 sqft of accommodation, the property comprises a full width (16'3x13') reception room, kitchen/breakfast room, principal bedroom with ensuite shower room, further double bedroom, main bathroom, extensive built-in and eaves storage and a share in the freehold. Eastbury Grove is in a super location being close to the River Thames, local parks, and Chiswick High Road's shops, cafes and restaurants. Transport links include Stamford Brook and Turnham Green stations, local bus routes and the A4/M4 for routes in and out of London. No onward chain.

### Eastbury Grove, W4

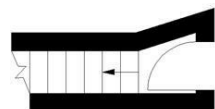
Approximate gross internal area

78.41 sq m / 844 sq ft

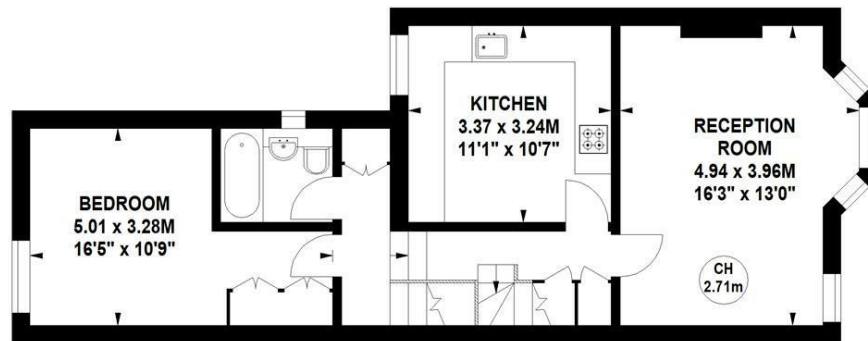
Key :  
 CH - Ceiling Height



### Second Floor



Ground Floor  
 Entrance



### First Floor

Not to scale, for guidance only and must not be relied upon as a statement of fact.  
 All measurements and areas are approximate only

## SITUATION



5-7 Turnham Green Terrace, Chiswick, London, W4 1RG

Tel 020 8747 8800

E-mail [sales@whitmanandco.com](mailto:sales@whitmanandco.com)

Website [www.whitmanandco.com](http://www.whitmanandco.com)

