



## 78 Southfield Park, Cowley, Oxford, Oxfordshire, OX4 2BA

Two double bedroom apartment in the well located area of Southfield Park Flats, Cowley.

This property included a spacious lounge/dining room with the access to the kitchen through an archway. There is also a good size bathroom with shower overhead, two good size bedrooms, comes furnished.

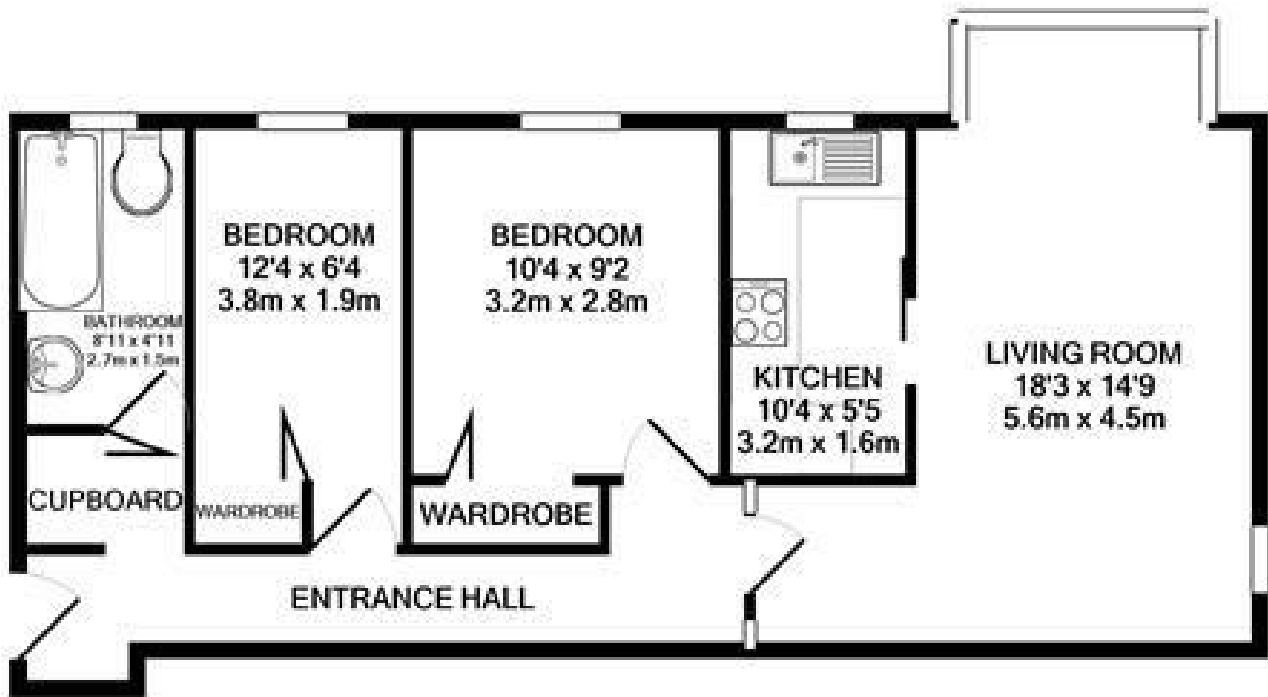
The property is located within walking distance to Cowley Road shops, restaurants and other local amenities as well as a walkway through to Headington, so good location for students or hospital employees.

Viewing highly recommended.

Suitable for Students or Professionals.

- 2 Bedrooms
- Flat or Apartment
- 1 Reception
- 1 Bathroom
- Furnished Property
- Professional Property

**£1,400 PCM**



Made with Metropix ©2020

Energy Efficiency Rating		
	Current	Potential
Very energy efficient - lower running costs		
(92 plus) <b>A</b>		
(81-91) <b>B</b>		
(69-80) <b>C</b>		
(55-68) <b>D</b>		
(39-54) <b>E</b>		
(21-38) <b>F</b>		
(1-20) <b>G</b>		
Not energy efficient - higher running costs		
	63	80
England & Wales		
EU Directive 2002/91/EC		

Environmental Impact (CO <sub>2</sub> ) Rating		
	Current	Potential
Very environmentally friendly - lower CO <sub>2</sub> emissions		
(92 plus) <b>A</b>		
(81-91) <b>B</b>		
(69-80) <b>C</b>		
(55-68) <b>D</b>		
(39-54) <b>E</b>		
(21-38) <b>F</b>		
(1-20) <b>G</b>		
Not environmentally friendly - higher CO <sub>2</sub> emissions		
	54	68
England & Wales		
EU Directive 2002/91/EC		