



Compton Crescent, London, W4 3JA

Guide Price £1,000,000

WHITMAN & CO.

SALES · LETTINGS · COMMERCIAL

- Located on a quiet cul-de-sac
- Heart of the Grove Park area
- Host of original features

- Period family house
- Three double bedrooms
- Two reception rooms

Tenure - Freehold
Local Authority - Hounslow
Council Tax - Band F

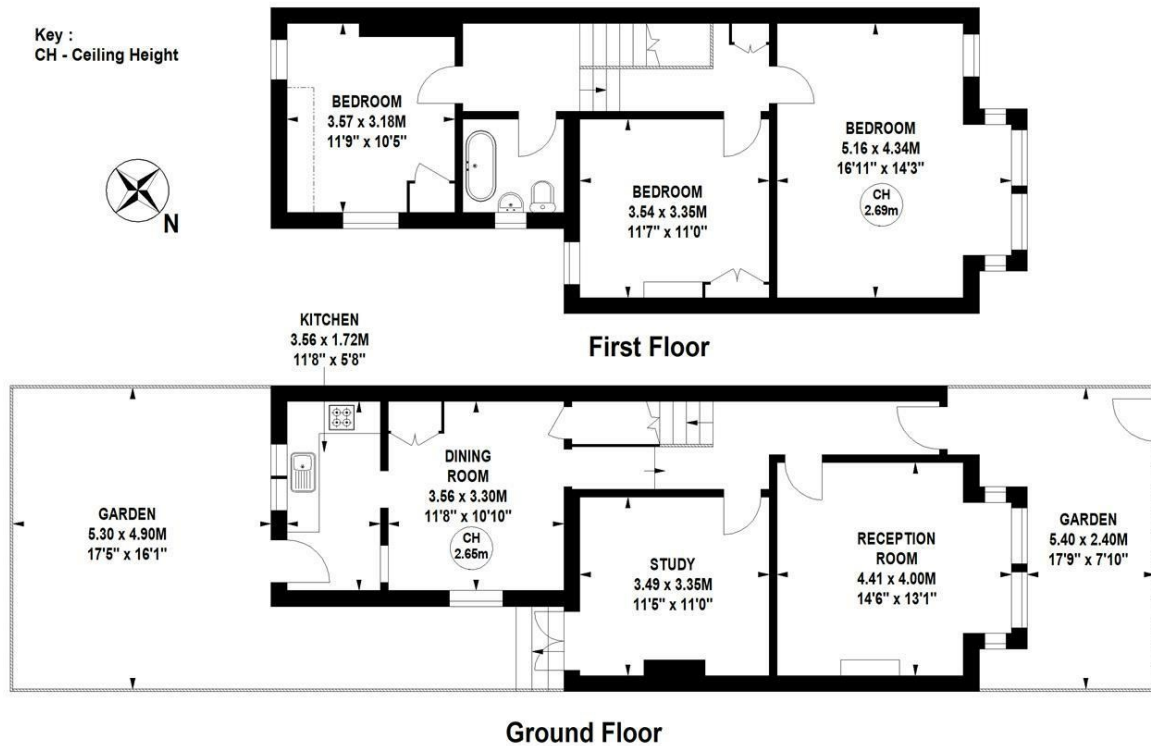
THE PROPERTY

A well-proportioned three-bedroom period family house, ideally located in this quiet cul-de-sac in the heart of the Grove Park area offering close proximity to numerous amenities. Comprising three double bedrooms, a large loft, two reception rooms, a fitted kitchen, breakfast room, landscaped patio garden, and a host of original features. Compton Crescent is very well-located within a short walk of Chiswick House and Gardens, the River, and a number of local shops, cafes, and restaurants. It is also in the catchment area of the OFSTED-rated 'Outstanding' Grove Park Primary School. Transport links include Gunnersbury and Chiswick stations, local bus routes, and the A4/M4 for routes in and out of London.

Compton Crescent, W4

Approximate gross internal area

117.15 sq m / 1261 sq ft



Not to scale, for guidance only and must not be relied upon as a statement of fact.
All measurements and areas are approximate only

SITUATION



5-7 Turnham Green Terrace, Chiswick, London, W4 1RG

Tel 020 8747 8800

E-mail sales@whitmanandco.com

Website www.whitmanandco.com

