

# WAYNE & SILVER



## 92 Fellows Road

Belsize Park, London, NW3 3JG

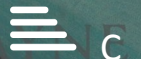
£6,000 Per Month

A rarely available top floor maisonette arranged over the first and second floors of an attractive period conversion. Offering 2085 sq. ft /194.07 sq. m of spacious accommodation, with its access on the raised ground floor level. This delightful period conversion offering an abundance of space and natural light comprises of a beautiful reception with feature fireplaces -dining room- Modern kitchen/diner - Study - Master bedroom with en suite bathroom and dressing room - 3 further double bedrooms - Family bathroom - Guest WC and utility room.

Fellows Road is ideally located just a short stroll from the open spaces of Primrose Hill Park and the popular shops and cafes of England's Lane. Moments from Swiss Cottage underground station.

### Viewing

Please contact our Wayne & Silver Sales Office on 020 7431 4488 if you wish to arrange a viewing appointment for this property or require further information.

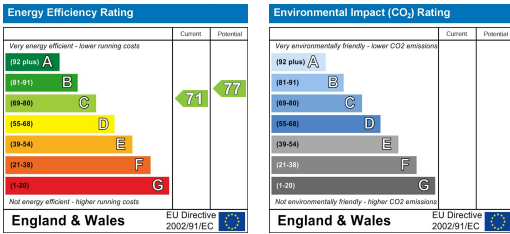


WAYNE  
& SILVER

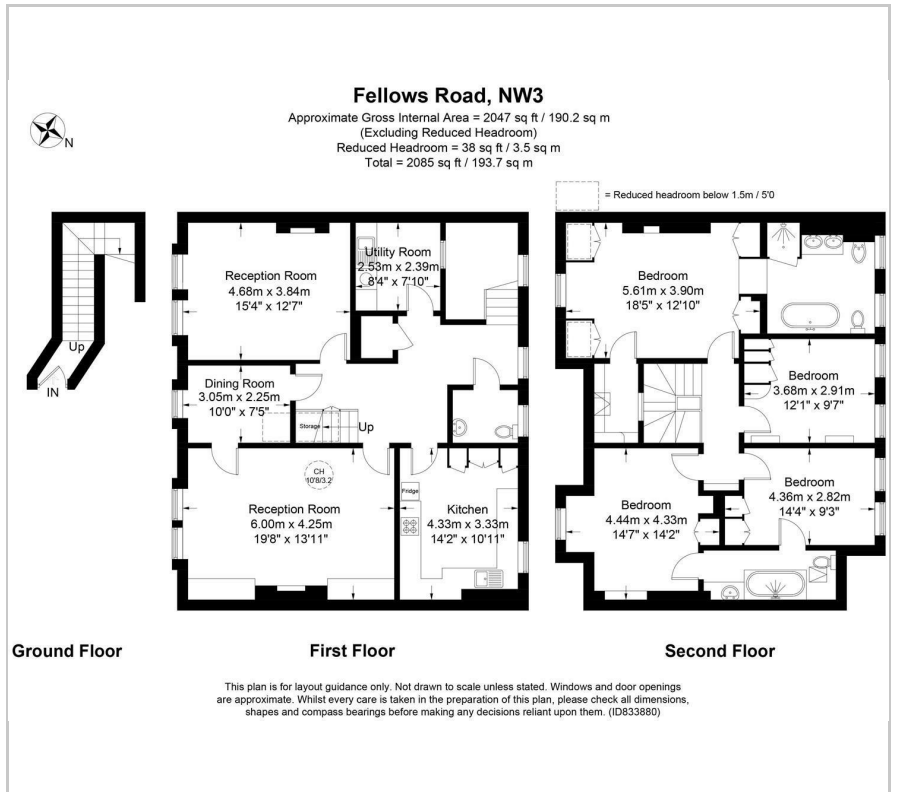




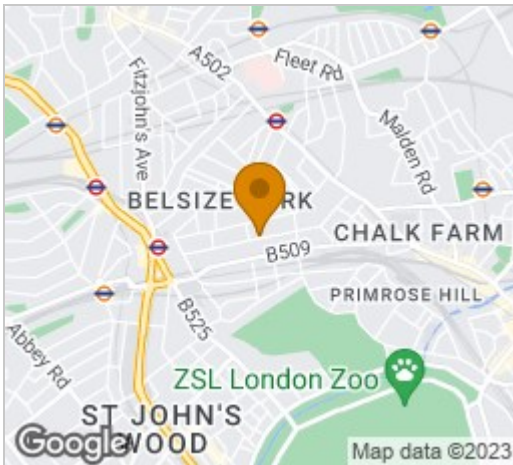
### Energy Efficiency Graph



### Floor Plan



### Area Map



These particulars, whilst believed to be accurate are set out as a general outline only for guidance and do not constitute any part of an offer or contract. Intending purchasers should not rely on them as statements of representation of fact, but must satisfy themselves by inspection or otherwise as to their accuracy. No person in this firm's employment has the authority to make or give any representation or warranty in respect of the property.