



Palmer & Partners



Palmer & Partners

**Domburg, 47 Merrilees Crescent, Holland-on-Sea, CO15 5XY** Guide Price: £260,000



# Domburg, 47 Merrilees Crescent, Holland-on-Sea, Clacton-on-Sea, Essex, CO15 5XY

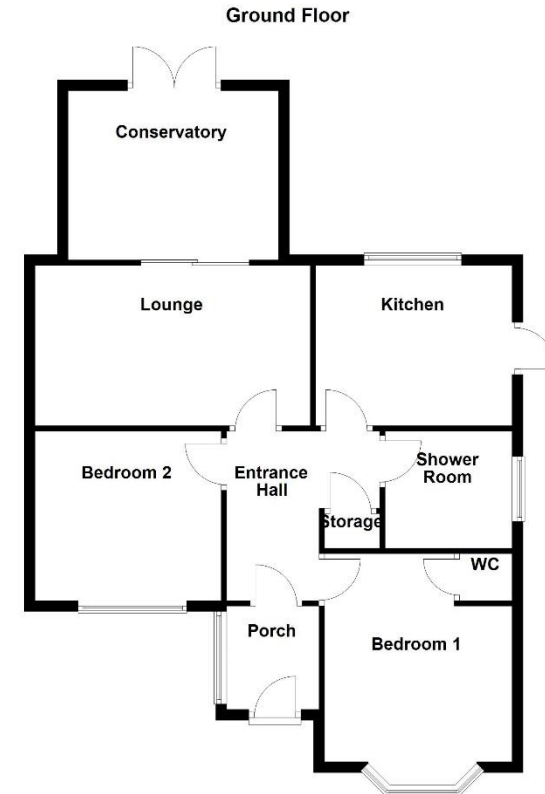
**GUIDE PRICE £260,000 – £270,000.**

This two bedroom semi-detached bungalow in Holland-on-Sea is now available for sale.

This semi-detached bungalow comes with a conservatory, en-suite W.C to the master bedroom, and an attic room. It's perfect for those seeking a comfortable and peaceful living environment without the hassle of an onward chain. The property also benefits from two bedrooms, lounge, bathroom, spacious rear garden and driveway to the front providing off road parking. Don't miss out on this wonderful opportunity in Holland-on-Sea.

## Accommodation & Amenities

- Semi Detached Bungalow
- No Onward Chain
- Two Bedrooms
- Holland-On-Sea
- Conservatory
- En-suite W.C To Master
- Generous Garden



Although every attempt has been made to ensure the accuracy of this floorplan measurements of doors, windows, rooms and any other items are approximate and no responsibility is taken for any error, omission or mis-statement. This plan is for illustrative purposes only.  
Plan produced using PlanUp.

Entrance Hall

Bedroom One - 4.14m 3.18m (13'7" 10'5")

Bedroom Two - 2.90m 2.54m (9'6" 8'4")

Shower Room - 2.21m 1.47m (7'3" 4'10")

Kitchen - 3.18m 2.77m (10'5" 9'1")

Lounge - 3.66m 2.77m (12'00" 9'1")

Conservatory - 3.45m 3.25m (11'4" 10'8")





