

Florence Road, London, W4 5DP

Guide Price £425,000

WHITMAN & CO.

SALES · LETTINGS · COMMERCIAL

- Reception with bay window
- Private west facing garden with side access
- New lease
- Double bedroom with doors to the garden
- Close to shops, restaurants, and bars on Chiswick High Road
- No onward chain

Tenure - Leasehold
 Lease Length - 125 Years Remaining
 Ground Rent - Peppercorn
 Service Charge - £850 pa
 Local Authority - Ealing
 Council Tax - Band D

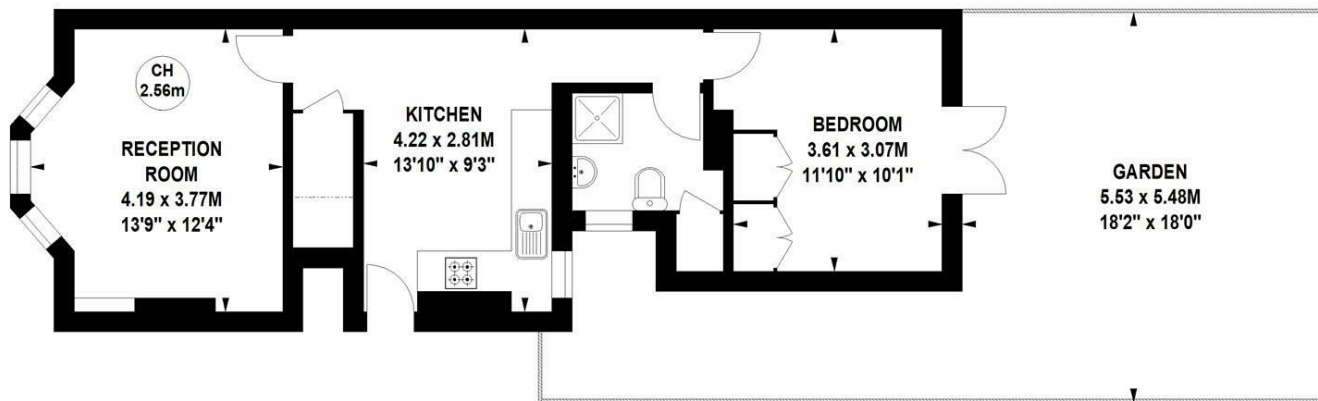
THE PROPERTY

A spacious one double bedroom ground floor garden flat ideally located in this quiet residential area offering close proximity to numerous amenities. The accommodation comprises a double bedroom with French windows on to the garden, 13'9 front reception room with bay window, 13'10 kitchen/breakfast room, white bathroom suite, private west facing garden with side access as well as a new 100+ years lease. Ideally situated in this tree-lined residential street offering close proximity to Turnham Green and South Acton stations, numerous bus routes and the extensive shops, bars and restaurants on Chiswick High Road. No Chain.

Florence Road, W4

Approximate gross internal area
 49.05 sq m / 528 sq ft

Key :
 CH - Ceiling Height



Ground Floor

Not to scale, for guidance only and must not be relied upon as a statement of fact.
 All measurements and areas are approximate only

SITUATION



5-7 Turnham Green Terrace, Chiswick, London, W4 1RG

Tel 020 8747 8800

E-mail sales@whitmanandco.com

Website www.whitmanandco.com

