



Offers In Excess Of £650,000 | House - Semi-Detached | Freehold

- Rarely available
- Three bedrooms
- Kitchen
- Unique hidden gem
- Summer house
- 230 year old character cottage
- Feature fire places
- Lounge
- Mature garden
- No onward chain

020 8892 1313

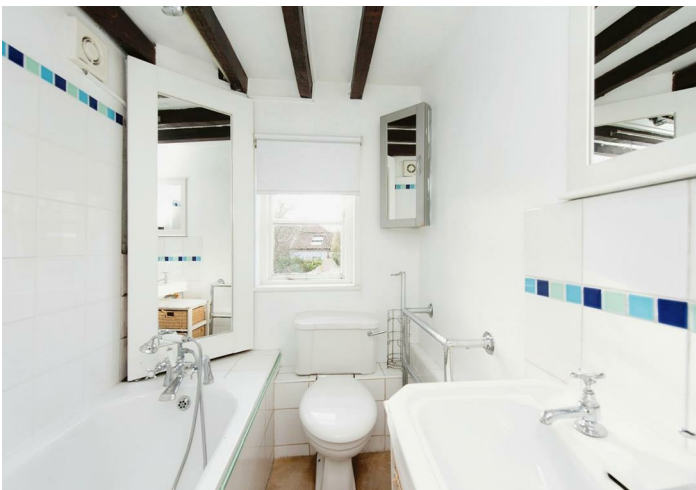


High Street, Hampton, London TW12 2SX

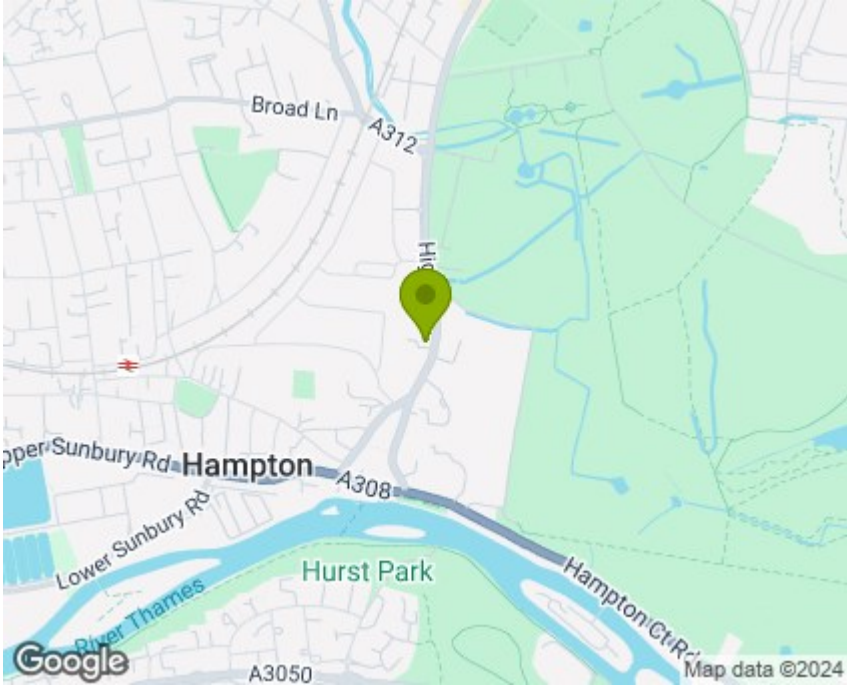
Milestone and Collis are pleased to offer this impressive 230-year-old three-bedroom cottage is set back from the road within a large walled garden.

The property comprises the kitchen leading into a through reception/dining room, two bedrooms and a bathroom on the first floor and, on the second floor, the master bedroom. In the garden, there is a wonderful summer house which can be used as an office/gym/man cave.

Ideally located to local shops, the River Thames, transport links and amenities.
Early viewing recommended to avoid disappointment.



Directions from Milestone and Collis Sales 86 Heath Rd, Strawberry Hill, Twickenham TW1 4BW, Head east on Heath Rd/A305/A311 towards Clifden Rd, 0.2 mi Turn right onto Cross Deep/A310, 0.5 mi At the roundabout, take the 2nd exit onto Waldegrave Rd/A309, 0.5 mi Turn right onto Shacklegate Ln/B360 Continue to follow Shacklegate Ln, 0.3 mi Continue onto Fulwell Rd, 0.3 mi Turn left onto Wellington Rd/A311 Continue to follow A311 1.4 mi High St Hampton

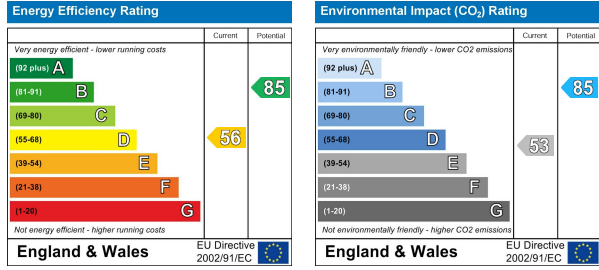


TW12 2SX lies on High Street in Hampton. TW12 2SX is located in the Hampton electoral ward, within the London borough of Richmond upon Thames and the English Parliamentary constituency of Twickenham. The Sub Integrated Care Board (ICB) Location is NHS South West London ICB - 36L and the police force is Metropolitan Police.

Nearby schools

- Twickenham Preparatory School, 43 High Street, Hampton, TW12 2SA, 273m
- Carlisle Infant School, Broad Lane, Hampton, TW12 3AJ, Primary, 793m
- Hampton Junior School, Percy Road, Hampton, TW12 2LA, Primary, 969m

Council tax band D



Total floor area 105.6 m² (1,136 sq.ft.) approx
 This floor plan is for illustrative purposes only. It is not drawn to scale. Any measurements, floor areas (including any total floor area), openings and orientation are approximate. No details are guaranteed, they cannot be relied upon for any purpose and they do not form part of any agreement. No liability is taken for any error, omission or misstatement. A party must rely upon its own inspection(s).
 Powered by www.focalagent.com

It is our aim to provide particulars that are both accurate and reliable but they are not guaranteed and would not form part of any offer or contract. Please contact us if you require clarification and we would be happy to assist. Please also note that the appliances and heating system have not been tested and therefore, no warranties can be given as to their condition.