

Chiswick High Road, London, W4 1SY

£995,000

WHITMAN & CO.

SALES · LETTINGS · COMMERCIAL

- Spacious luxury apartment
- Secure gated development with off street parking
- Private garden
- Central Chiswick Location
- Three beds/two baths
- No onward chain

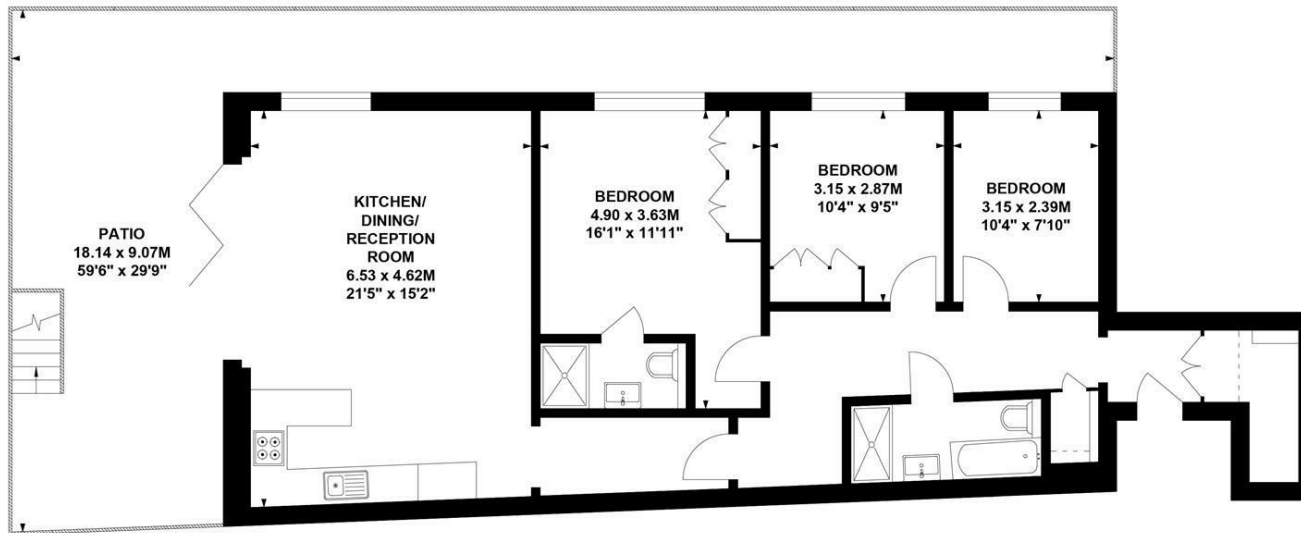
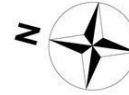
Tenure - Leasehold
 Lease length - 190 Years remaining
 Ground rent - £450 pa
 Service charge- £4100 pa
 Local authority - Hounslow
 Council tax - Band E

Chiswick High Road,, W4

Approximate gross internal area

93.56 sq m / 1007 sq ft

Key :
 CH - Ceiling Height



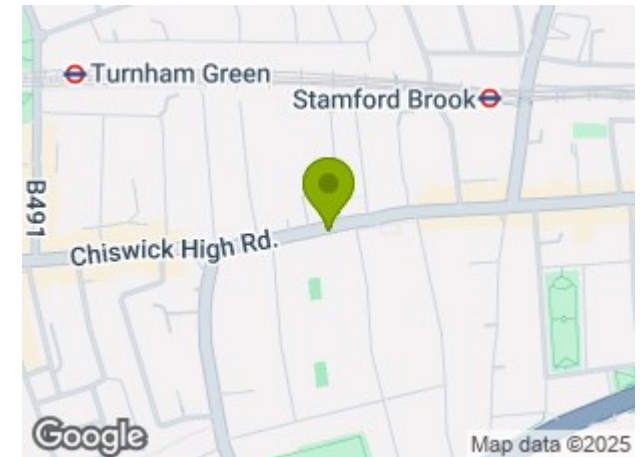
Lower Ground Floor

Not to scale, for guidance only and must not be relied upon as a statement of fact.
 All measurements and areas are approximate only

THE PROPERTY

A lovely three-bedroom apartment situated in this very popular central Chiswick residential area within this exclusive gated development. With the thoroughfare of Chiswick High Road with its array of boutique shops, restaurants and supermarkets on its doorstep the accommodation provides a spacious living room with an open plan kitchen with bi-fold doors opening onto a private courtyard with an additional side return garden, a primary bedroom with ensuite shower room and fitted wardrobes, two further double bedrooms, bathroom with separate shower, extensive built-in storage, secure off-street parking, gated security, wood floors throughout with underfloor heating. Local transport links include Turnham Green and Stamford Brook tube stations, numerous local bus routes and convenient vehicular access via the A4/M4 to Central London, Heathrow and the West. No onward chain.

SITUATION



5-7 Turnham Green Terrace, Chiswick, London, W4 1RG

Tel 020 8747 8800

E-mail sales@whitmanandco.com

Website www.whitmanandco.com