



 litchfields

Northwood Hall, Hornsey Lane, N6

£475,000 Leasehold

 litchfields

44 highgate high street, highgate village, london, n6 5hx

telephone 020 8348 8000 facsimile 020 8348 8232

email highgate@litchfields.com web litchfields.com

offices also in [hampstead garden suburb](#)



 litchfields

We are pleased to offer this 2 bedroom apartment on the top floor (6th with lift) of this impressive Art-Deco purpose built block. This bright, well presented flat features a good size reception room with access to a private balcony with stunning views across the city skyline, a well proportioned master bedroom, second, single bedroom and well appointed kitchen and bathroom. Further benefits include porter, off street parking and well maintained communal gardens. Northwood Hall is conveniently located for access to Northern Line Tube (zone 2), Highgate Village, Waterlow Park, the Parkland Walk and Crouch End Broadway Chain Free. EPC - D



Art-Deco purpose-built block
Top floor flat (6th) with lift
Reception Room
Balcony with stunning views to the City
Two Bedrooms
Kitchen
Bathroom
Porter
Off Street Parking
Communal Gardens
Fast Access to Tube, Highgate Village
& Crouch End Broadway
Chain Free
EPC -D

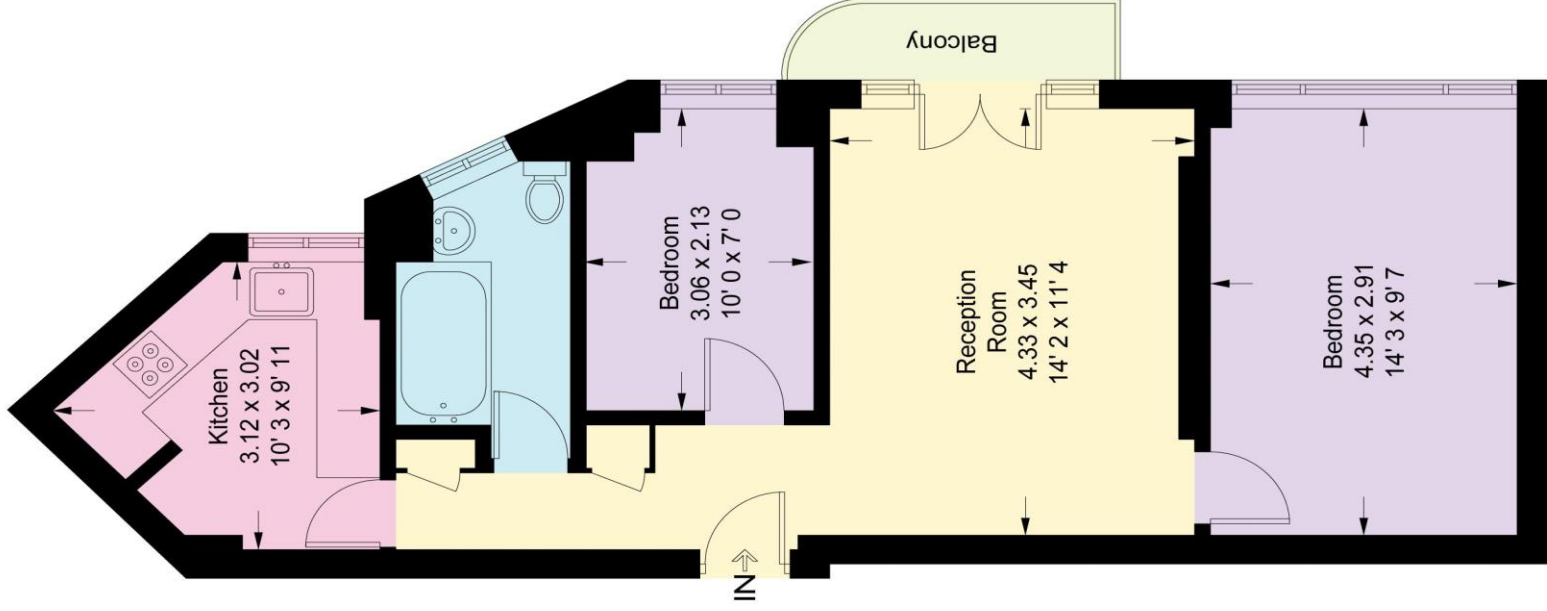




Communal Garden

Northwood Hall

Approximate Gross Internal Area = 584 sq ft / 54.3 sq m



Sixth Floor

This plan is not to scale and must be used as layout guidance only. All measurements and areas are approximate and should not be relied upon to provide accurate information. This plan must not be relied upon when making property valuations, design considerations or any other such relevant decisions. We accept no responsibility or liability (whether in contract, tort or otherwise) in relation to any loss whatsoever arising from or in connection with any use of this plan or the adequacy, accuracy or completeness of it or any information within it.