



1 Henry Road, London, N4 2LH

Asking Price £1,700,000

# 1 Henry Road, London N4 2LH

Alwyne Presents: Charming 3000sqft Victorian Villa in Prime Finsbury Park Location

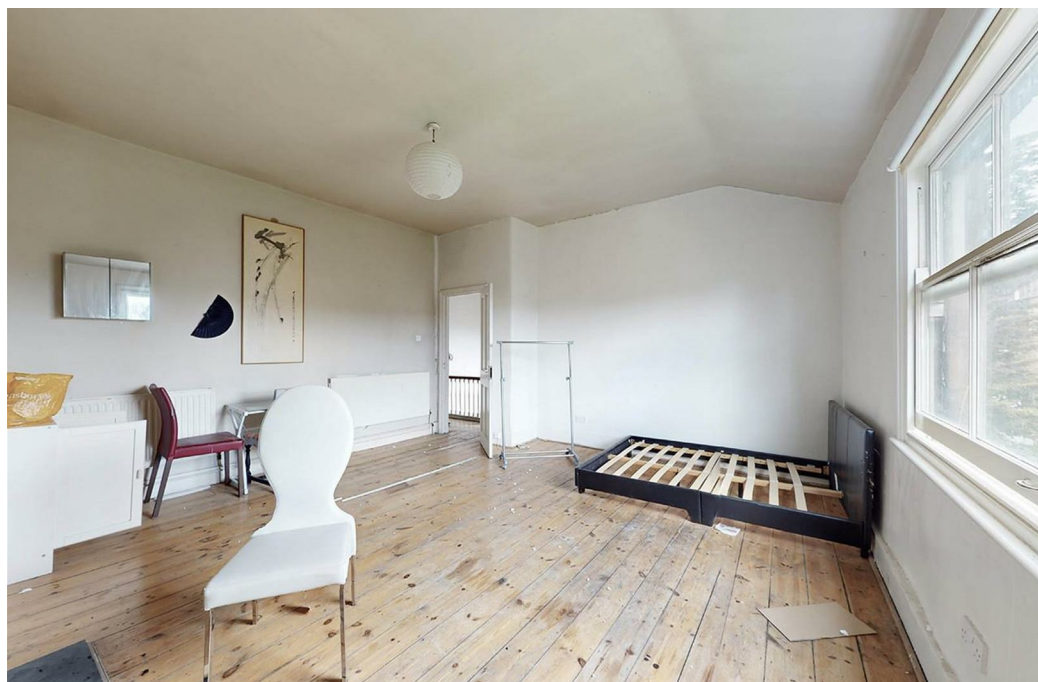
Alwyne is thrilled to introduce this magnificent Victorian House, nestled on one of Finsbury Park's most prestigious roads. Steeped in history and graced with timeless elegance, this property emerges onto the market after being cherished by the same family for a very long period of time.

## Key Features:

- ? Premier Location: Situated on a sought-after road in Finsbury Park, renowned for its character and charm.
- ? Spacious Layout: Offering an expansive 3000 square feet of living space, providing ample room for versatile living arrangements.
- ? Impressive Garden: A highlight of this property is its sprawling 100ft garden, offering a tranquil retreat in the heart of the city.
- ? Detached Garage: Convenience meets functionality with a detached garage providing secure parking and additional storage space.



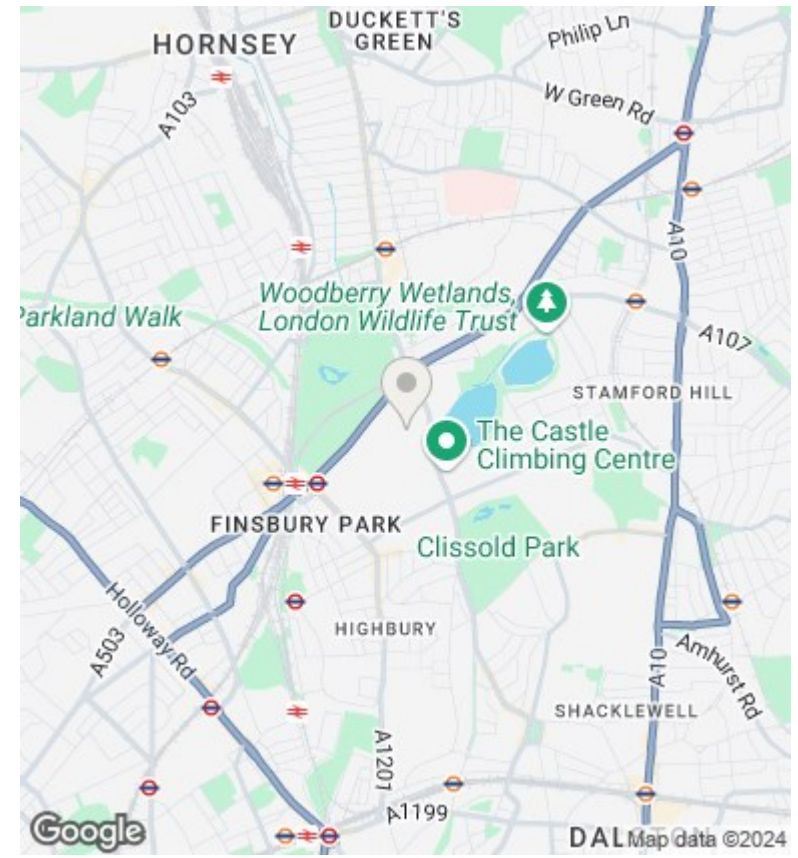
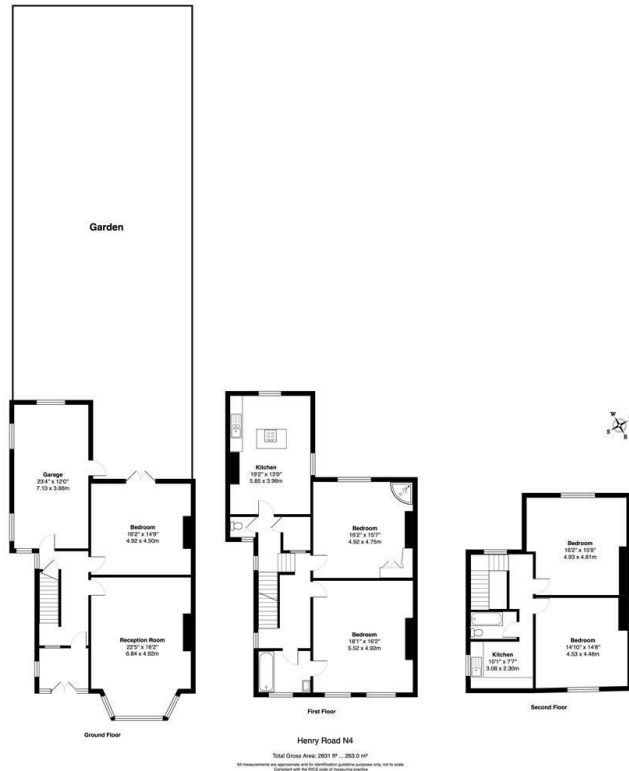
Council Tax Band:



Full description







## Directions

## Viewings

Viewings by arrangement only. Call 02073593191 to make an appointment.

## Council Tax Band

Energy Efficiency Rating		Current	Potential
<i>Very energy efficient - lower running costs</i>			
(92 plus) <b>A</b>			
(81-91) <b>B</b>			
(69-80) <b>C</b>			
(55-68) <b>D</b>			
(39-54) <b>E</b>			
(21-38) <b>F</b>			
(1-20) <b>G</b>			
<i>Not energy efficient - higher running costs</i>			
<b>England &amp; Wales</b>		EU Directive 2002/91/EC	