



Palmer & Partners



Palmer & Partners

Beck Close, Rendlesham, Suffolk, IP12 2UE

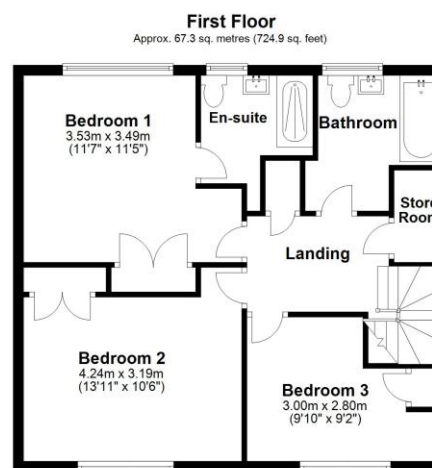
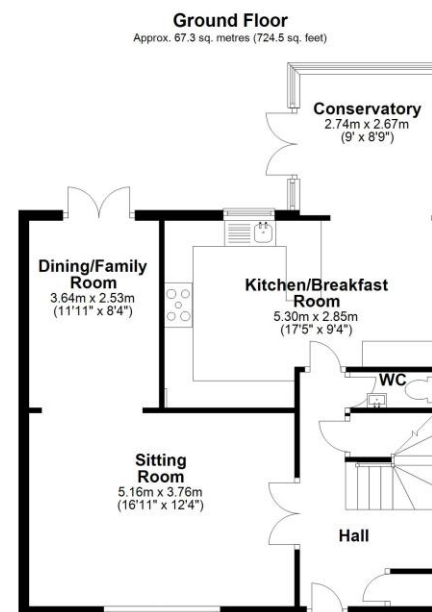
OIEO: £285,000

Beck Close, Rendlesham, Woodbridge, Suffolk, IP12 2UE

This stunning and beautifully presented three bedroom semi-detached house, situated down a quiet cul-de-sac in the sought after village of Rendlesham, has been much improved by the current owners including new refitted kitchen, bathroom, en-suite and cloakroom. This exceptional family home benefits from a large driveway providing off-road parking for three / four cars, sixteen 4kw solar panels installed in 2015, newly fitted electric radiators throughout, double glazing, and a private rear garden. As agents, we recommend the earliest possible internal viewing to fully appreciate the quality and size of the accommodation on offer which comprises entrance hall; refitted ground floor cloakroom; sitting room with electric wood burning stove and opens through to the dining / family room; refitted kitchen / breakfast room; conservatory; first floor landing; refitted family bathroom; and three double bedrooms, one of which has a refitted en-suite shower room.

The popular village of Rendlesham is approximately six miles of the market town of Woodbridge and built around the former RAF Bentwaters. Village amenities include community centre, doctor's surgery, dentist, supermarket with Post Office, vets, hairdressers, fish & chip shop, bar, as well as taxi companies and a range of businesses on Bentwaters Park and Rendlesham Mews. The village also has a primary school, children's nursery, care home and two churches and there are two buses that run through the village. Rendlesham Forest is a haven for walkers and cyclists with the Arts & Cultural centre of Snape Maltings within striking distance.

Council tax band: B



Total area: approx. 134.7 sq. metres (1449.4 sq. feet)

Although every attempt has been made to ensure the accuracy of this floorplan measurements of doors, windows, rooms and any other items are approximate and no responsibility is taken for any error, omission or mis-statement. This plan is for illustrative purposes only.
Plan produced using PlanUp.



