



## GLOBE VIEW, LONDON, EC4V 3PS

£610 Per Week

2 Bedrooms | 2 Bathrooms | To Let

### Property Features

- Two Bedrooms
- Two Bathrooms
- Balcony
- Close to The River and St Pauls
- Fitted Kitchen
- Wood Flooring
- Furnished
- Available Now

This two double bedroom, two bathroom riverside property is in the heart of the city comprising of a large sitting room with open planned kitchen. The kitchen is fully fitted and equipped. Off the reception room you have a small balcony overlooking the internal atrium. Carpet flooring throughout with exception of the bathrooms and the kitchen. Other features of this amazing apartment is its close proximity to Bank ,Mansion House and St Pauls Stations and the advantage of a concierge. Available November 2024.

Globe View is close to St Pauls in a very central CITY location also close to BLACKFRIARS (Circle Line), St PAUL'S (Central Line) Mansion House and the new Elizabeth Line Station at Moorgate and Farringdon. Within walking distance are Waitrose, Marks & Spencer and Tesco. Also within easy reach are St. Pauls' Cathedral, The River, South Bank, Tate Modern, and the One New Change Shopping Complex with sixty shops, restaurants and bars.

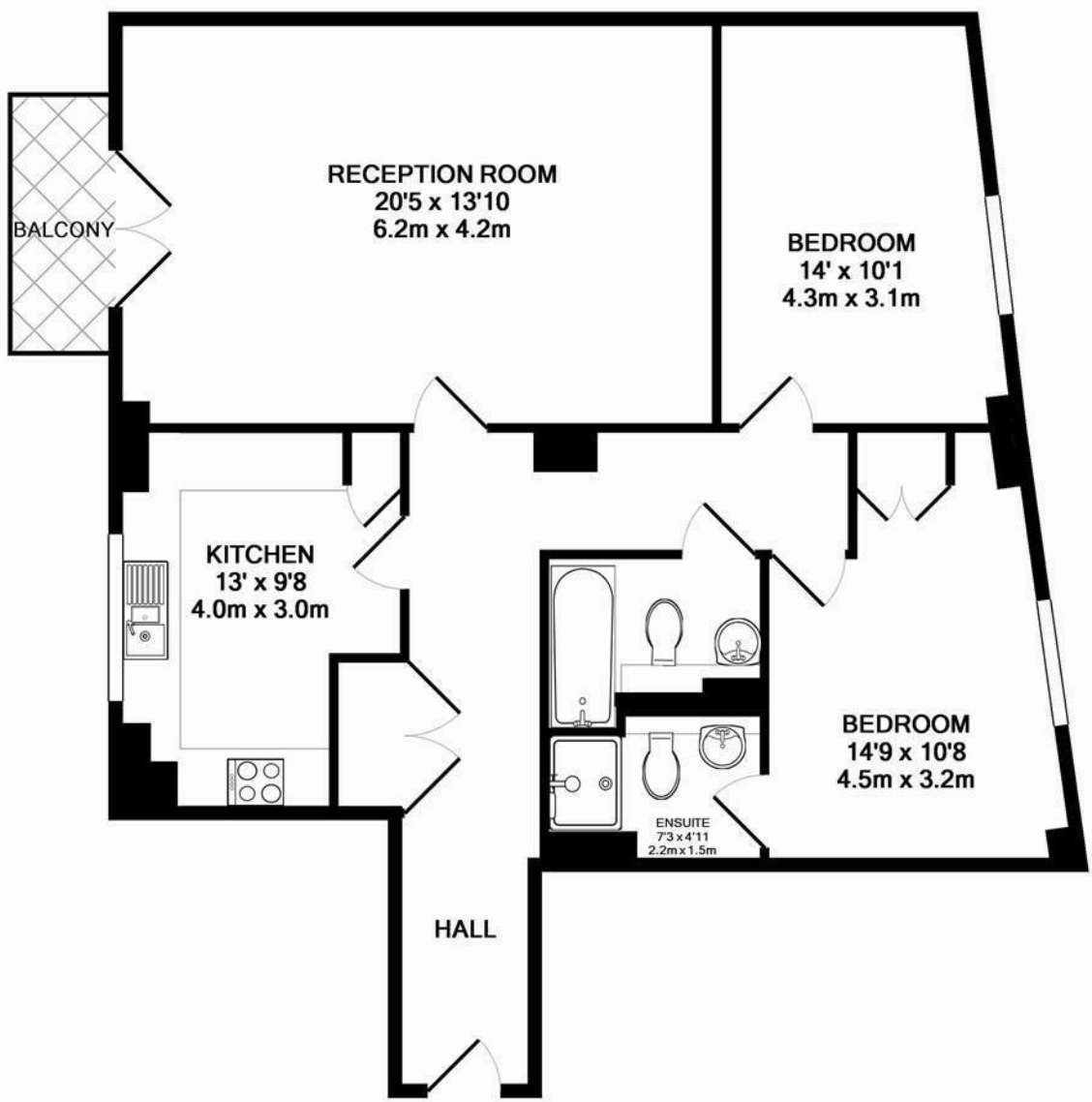
Council Tax: Band G = £2029.82 per year (25% discount for single occupancy)

Deposit: 5 Weeks Rent

No Agency Fee

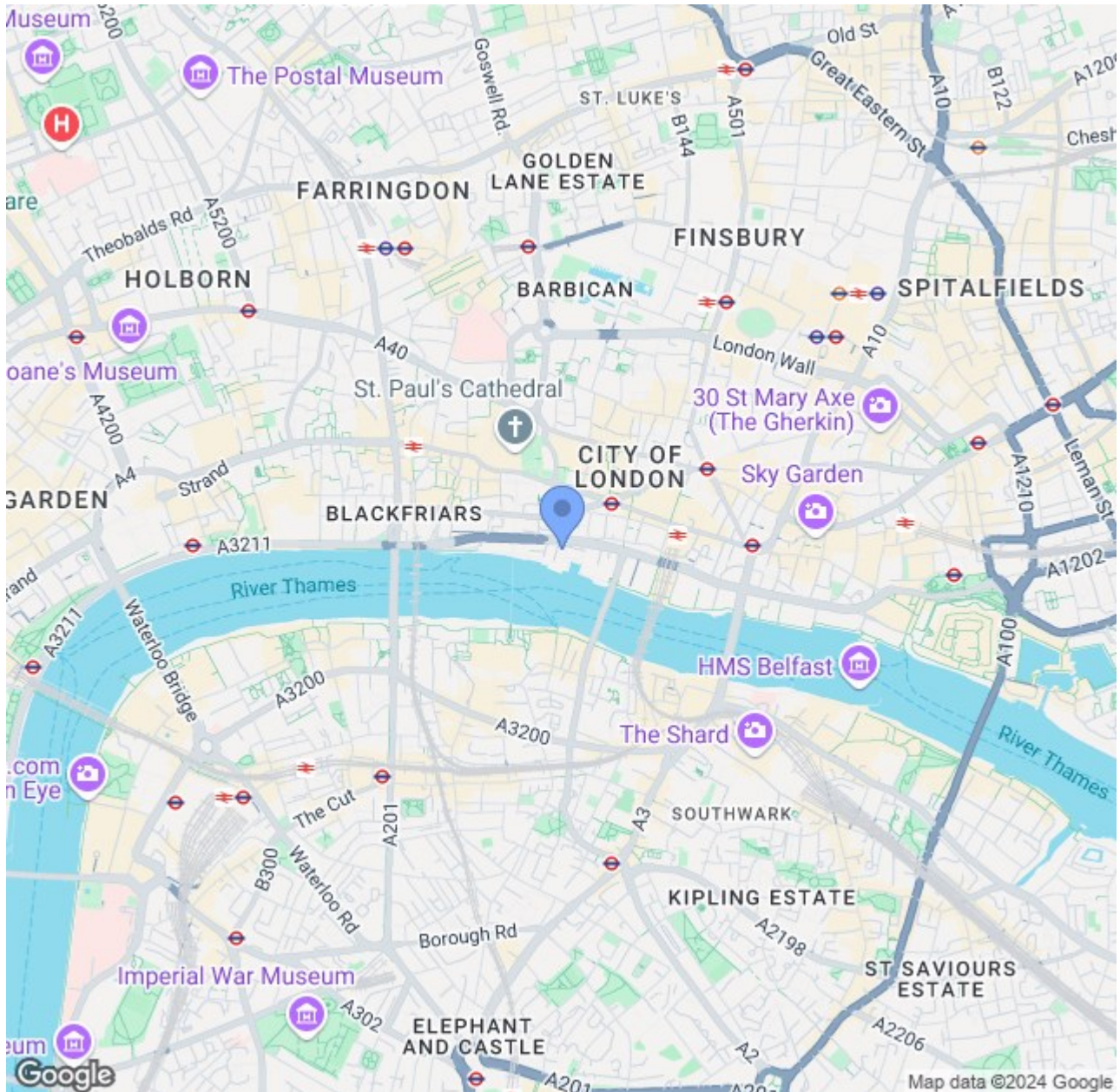
Tenancy: 12 month contract





1ST FLOOR

GLOBE VIEW EC4  
TOTAL APPROX. FLOOR AREA 908 SQ.FT. (84.3 SQ.M.)  
Measurements are approximate. Not to scale. Illustrative purposes only



## CONTACT US ABOUT THIS PROPERTY

122 Newgate Street, London, EC1A 7AA

T: 020 7600 0026

F: 020 7600 0025

E: [property@scottcity.co.uk](mailto:property@scottcity.co.uk)



Energy Efficiency Rating		
	Current	Potential
Very energy efficient - lower running costs		
(92 plus) <b>A</b>		
(81-91) <b>B</b>	81	82
(69-80) <b>C</b>		
(55-68) <b>D</b>		
(39-54) <b>E</b>		
(21-38) <b>F</b>		
(1-20) <b>G</b>		
Not energy efficient - higher running costs		
<b>England &amp; Wales</b>	EU Directive 2002/91/EC	