



12a Nelson Road Central, Great Yarmouth

Guide Price £150,000 - £160,000

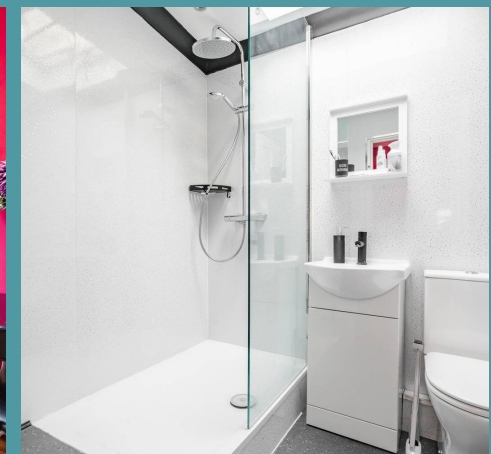
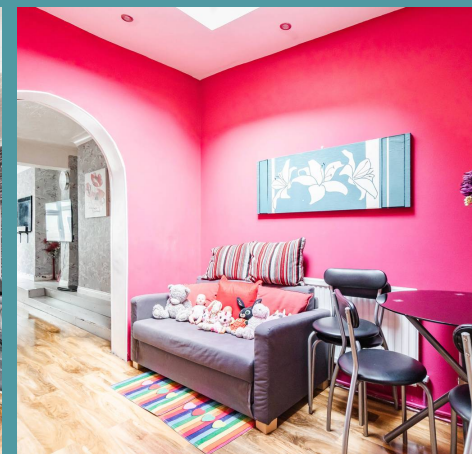
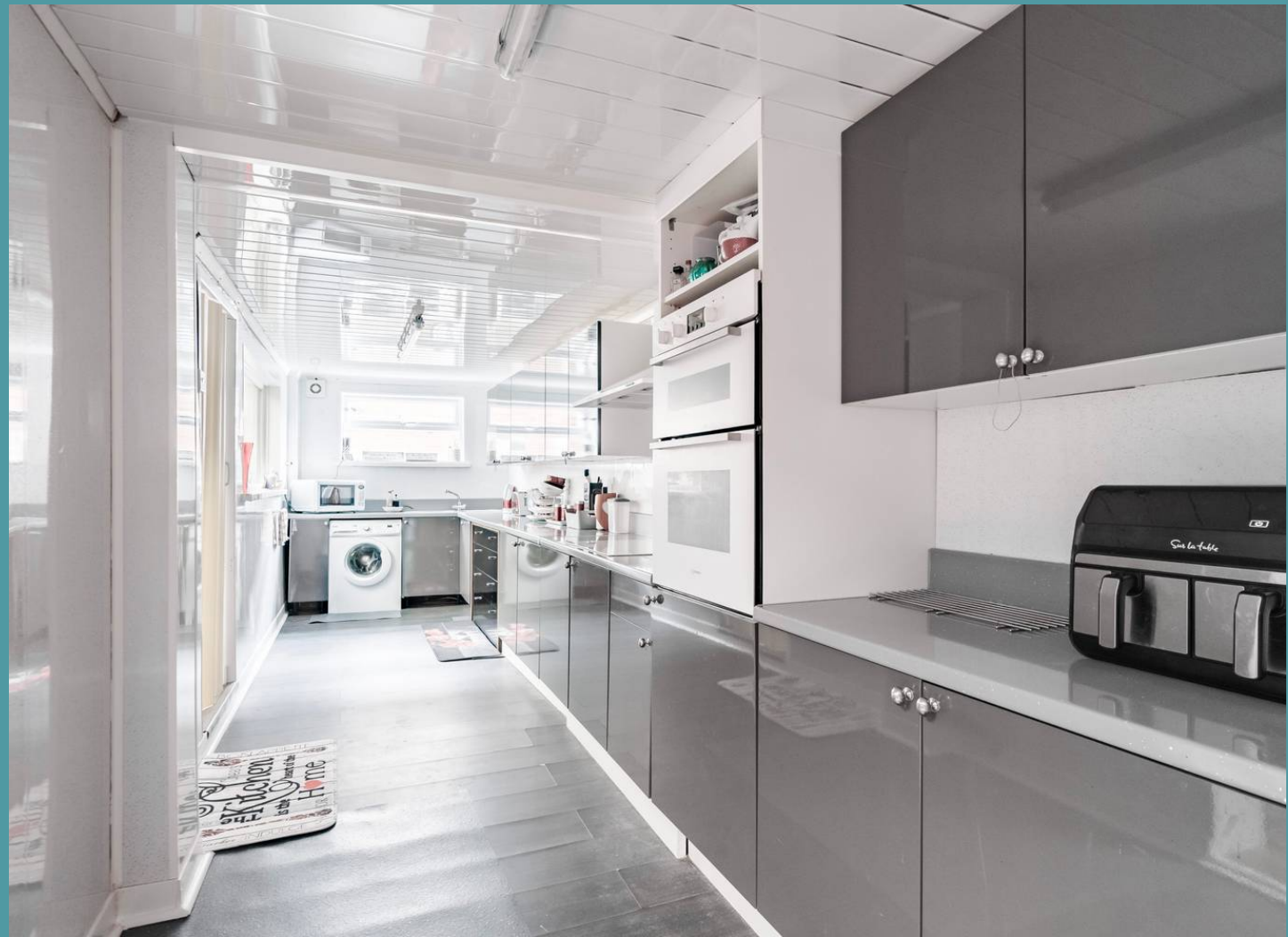
12a Nelson Road Central

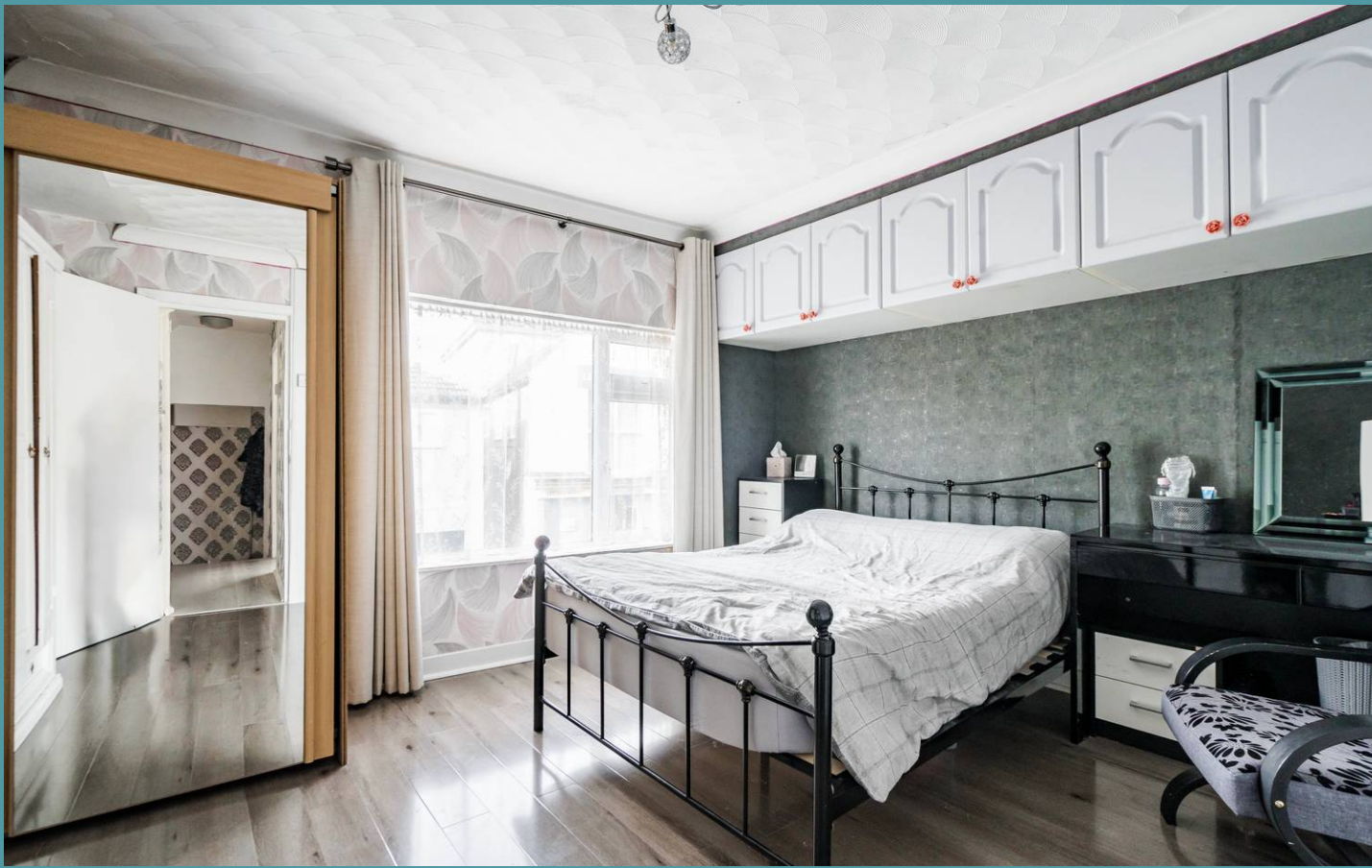
Great Yarmouth

This charming three bedroom mid-terrace house presents an ideal opportunity for a perfect first home or savvy investment purchase. Brimming with spacious accommodation spread across three floors, this property offers an inviting and versatile living space, tailored to meet the needs of modern life. Don't miss the chance to acquire this home and experience all it has to offer.

LOCATION

Great Yarmouth is a coastal town in Norfolk, England, located on the eastern edge of the country where the River Yare meets the North Sea. Known for its long sandy beaches and historic maritime connections, it has been a popular seaside resort since the 18th century. The town boasts a lively seafront with amusement arcades, attractions like the Sea Life Centre, and the Pleasure Beach funfair. Great Yarmouth is also steeped in history, with its ancient city walls, the medieval Tolhouse Museum, and the historic Market Place. Its proximity to the Norfolk Broads, a network of scenic rivers and lakes, adds to its appeal for boating and nature enthusiasts. Despite its traditional charm, Great Yarmouth has a modern side, with vibrant festivals, a bustling harbor, and a strong local community.



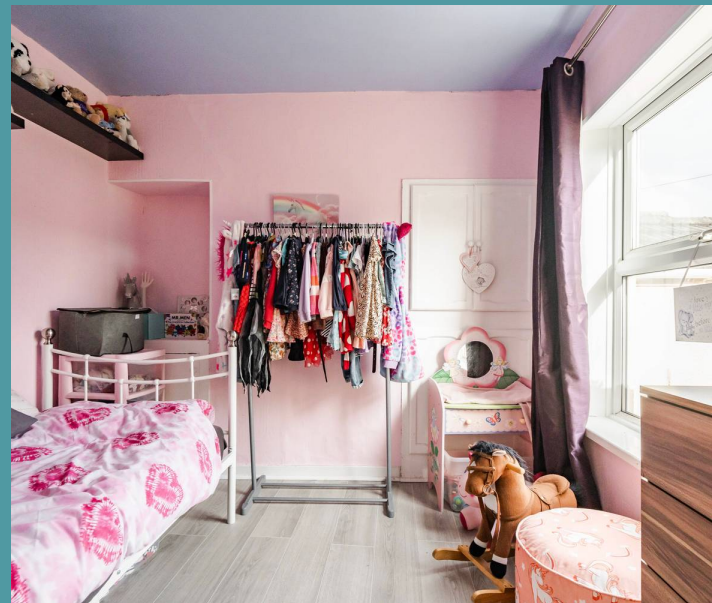
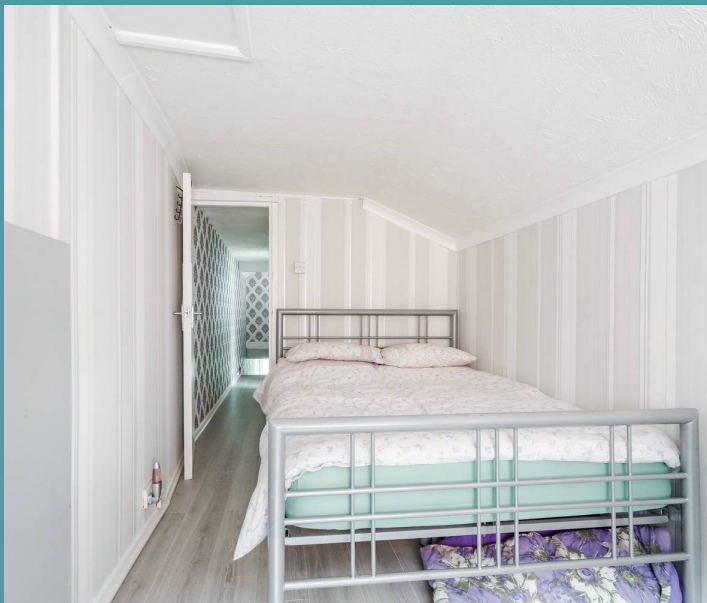


12a Nelson Road Central

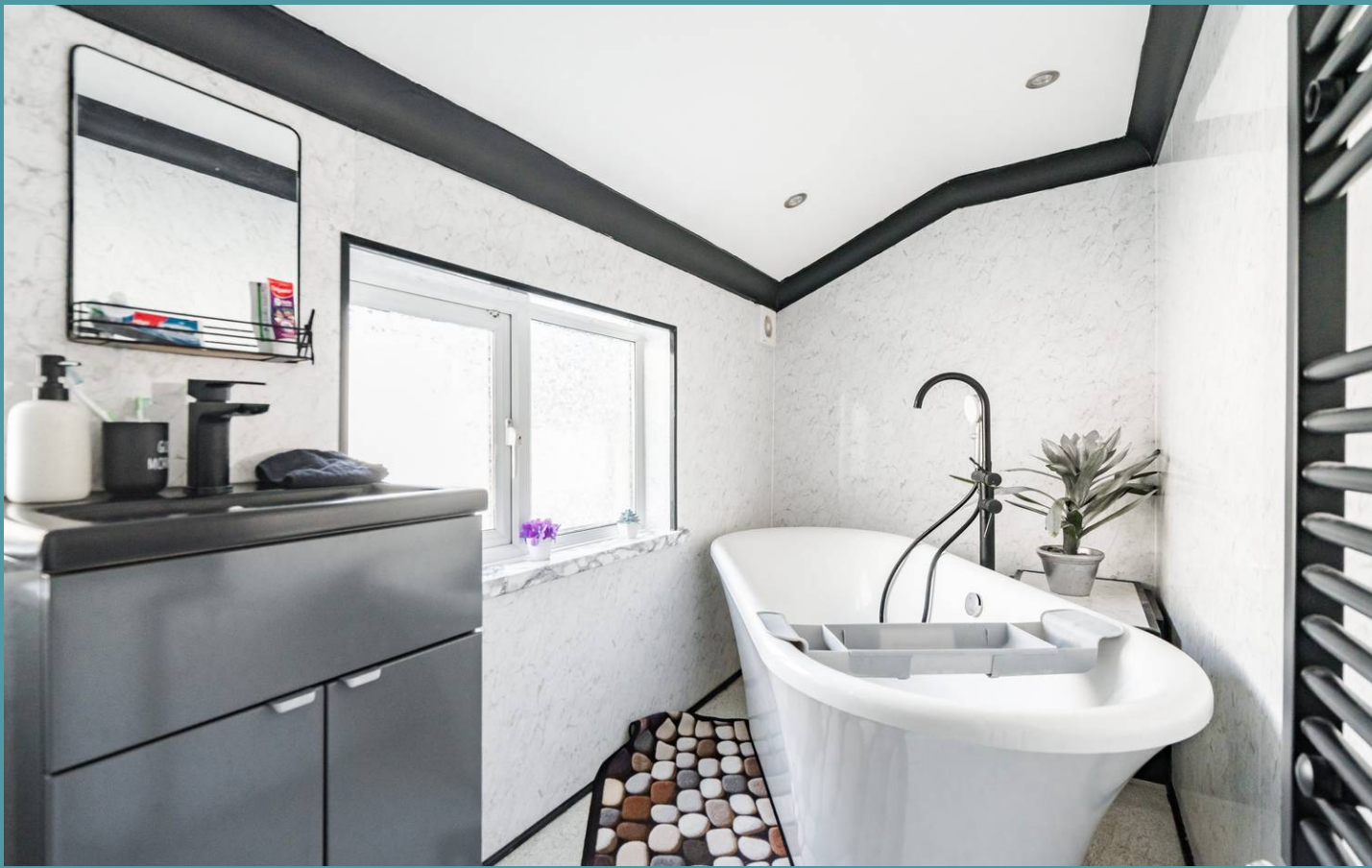
Great Yarmouth

Upon entering the property, you are greeted by a spacious sitting room, which exudes warmth and welcome. Large windows allow an abundance of natural light to permeate the room, creating a bright and airy atmosphere that is perfect for relaxation or entertaining guests. The adjacent dining room beckons family gatherings and provides a setting to create lasting memories.

The heart of the home lies in the large, well-equipped kitchen, fitted with high-quality units and integrated appliances to enhance your cooking experience. This thoughtfully designed space offers ample storage and worktop areas, ensuring that preparing your favourite meals is a pleasure. The ground floor accommodation is completed with a convenient shower room, with a three piece modern suite.



Ascend to the upper floors, where you will find four sizeable bedrooms, offering the potential for a growing family or accommodating guests with comfort and ease. A family bathroom cater to the practical needs of daily living, providing functionality and convenience in equal measure.



12a Nelson Road Central

Great Yarmouth

For those seeking convenience and ease of maintenance, an enclosed courtyard offers a low-maintenance outdoor space that is suitable for soaking up the afternoon sunshine or simply enjoy the fresh air. Parking is made hassle-free with off-road parking available at the rear, ensuring that coming home is always a stress-free experience.

AGENTS NOTES

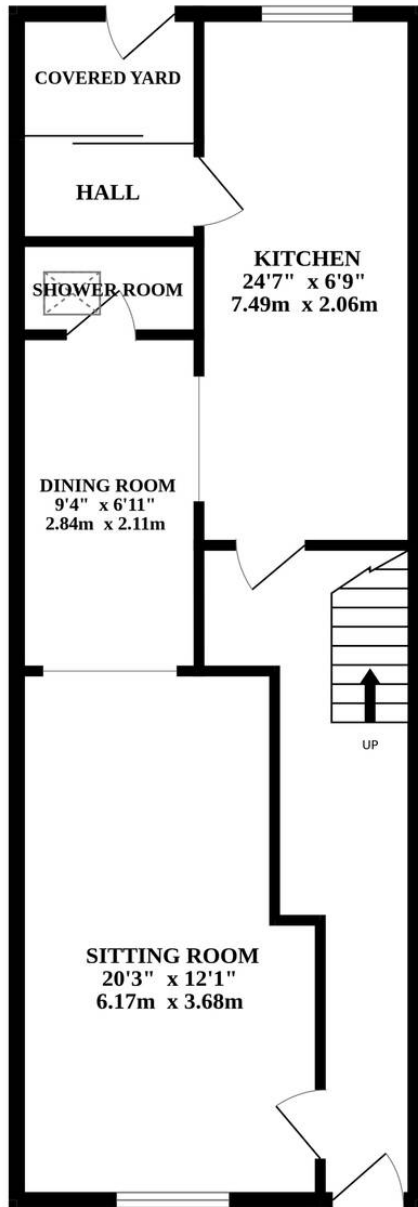
We understand that this property is freehold.

Council Tax Band: A

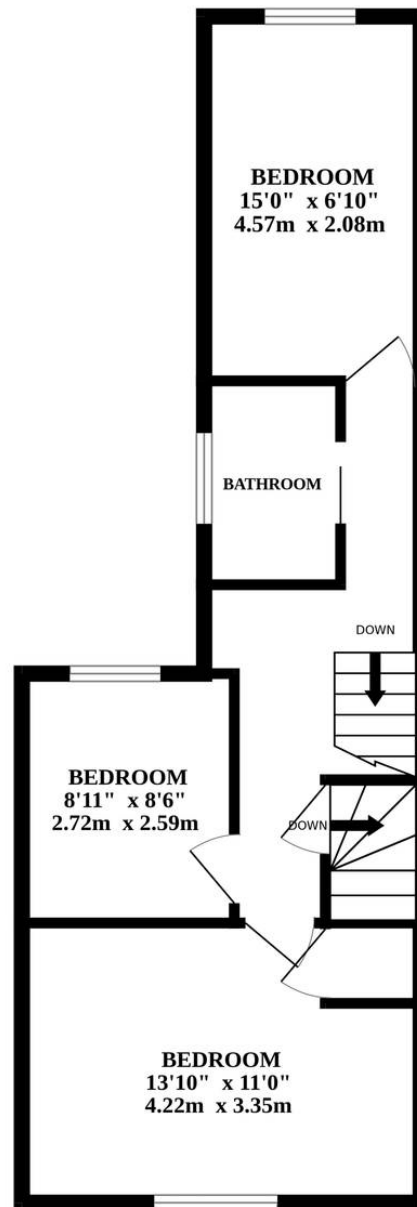
- Mid-terrace residence - Spacious accommodation across three floors
- Perfect first home or investment purchase
- Spacious sitting room - Filled with an abundance of natural light
- Dining room to encourage family gatherings
- Large well-equipped kitchen to be able to cook your favourite meals
- Four sizeable bedrooms, family bathroom & a ground floor shower room
- Low maintenance courtyard - Fully enclosed for privacy
- On-road parking available
- Within walking distance to Marine Parade beach/sea & Great Yarmouth town centre
- In close proximity to all local amenities and natural surroundings



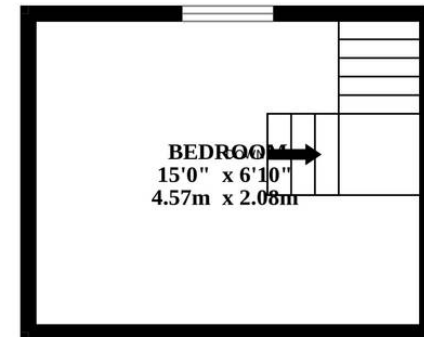
GROUND FLOOR



1ST FLOOR



2ND FLOOR



Whilst every attempt has been made to ensure the accuracy of the floorplan contained here, measurements of doors, windows, rooms and any other items are approximate and no responsibility is taken for any error, omission or mis-statement. This plan is for illustrative purposes only and should be used as such by any prospective purchaser. The services, systems and appliances shown have not been tested and no guarantee as to their operability or efficiency can be given.
Made with Metropix ©2024