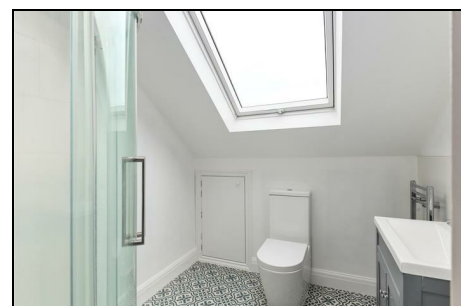


**West Barnes Lane
Motspur Park, KT3 6HZ**

£450,000 Leasehold - Share of Freehold



WEST BARNES LANE, KT3 6HZ - This beautifully presented TWO DOUBLE BEDROOM, TWO BATHROOM, split level Maisonette is perfectly located for access to both Motspur Park and Raynes Park. There is a spacious reception room, newly fitted separate kitchen, modern bathroom and shower room and two good sized double bedrooms. No Onward Chain - Share of Freehold.



Although these particulars are believed to be correct, their accuracy is not guaranteed and they do not form part of any contract.

**Celebrating 30 years
of successful Sales and
Lettings in Merton**



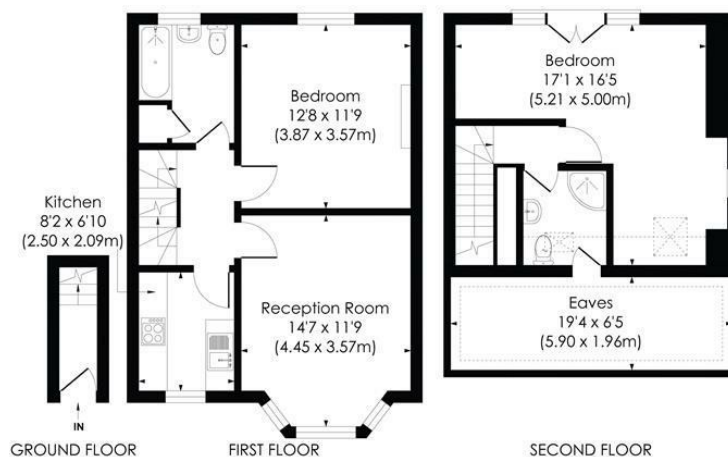


WEST BARNES LANE, KT3

Approx. Gross Internal Floor Area

919 Sq. ft/85.37 Sq. m (Including reduced height)

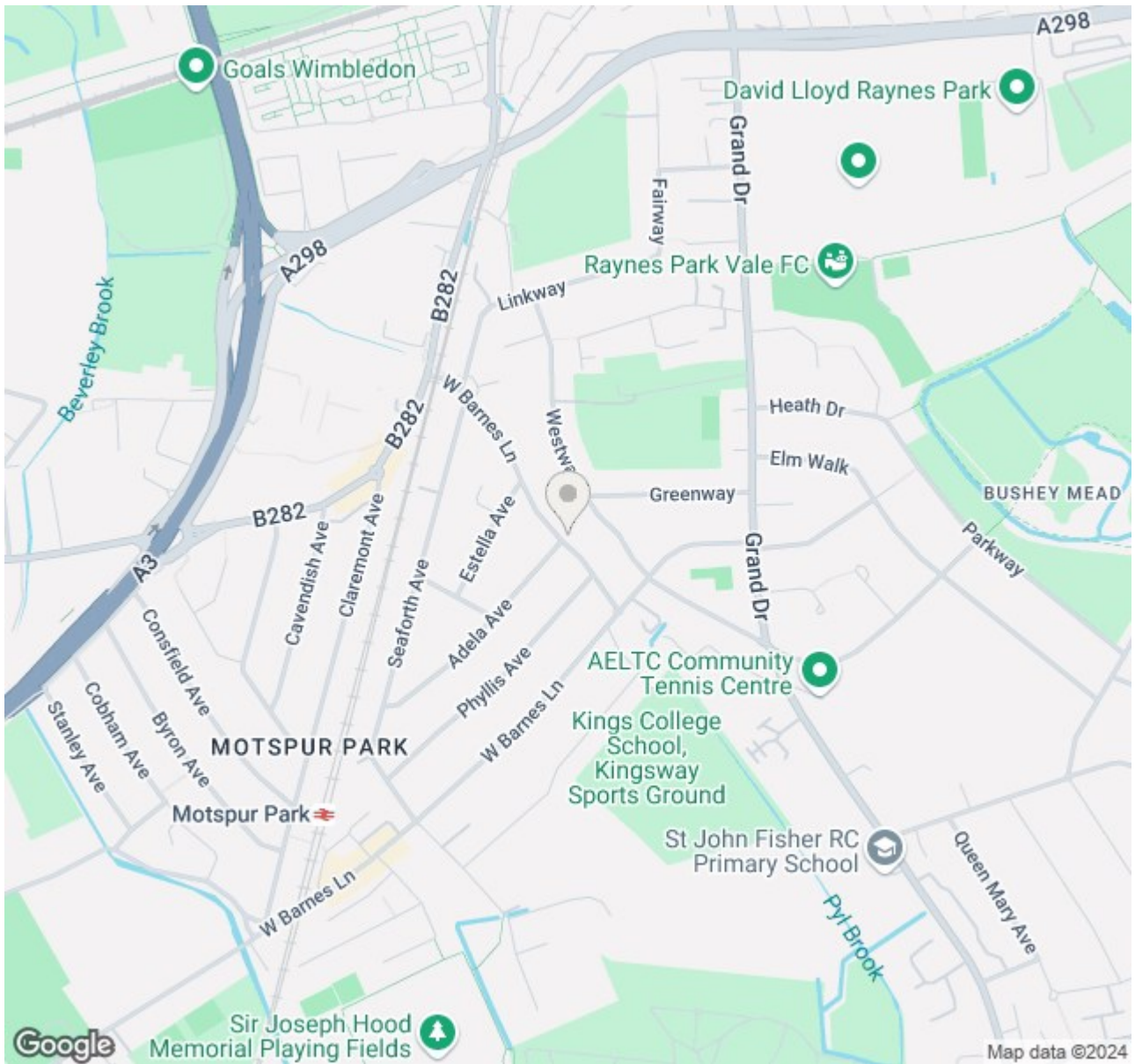
754 Sq. ft/70.05 Sq. m (Excluding reduced height)



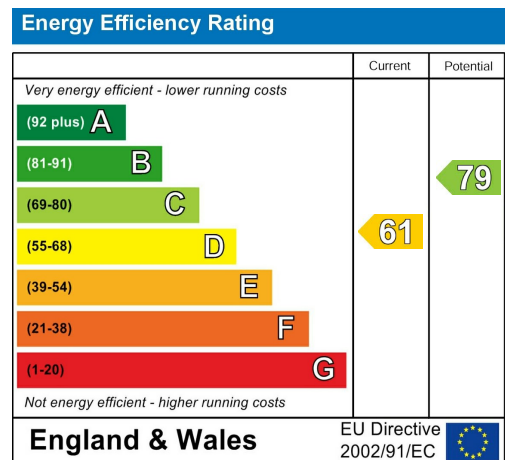
© Pixangle Property Marketing Ltd. info@pixangle.com Tel: 0208 870 2118

pixangle
PROPERTY MARKETING

This floor plan has been prepared for the purpose of illustration only in accordance with the latest RICS code of measuring practice and is not to scale. All measurements and areas are approximate and whilst every effort has been made to ensure the accuracy of the plan contained here, no responsibility is taken for any error, omission or misstatement.



- WEST BARNES LANE, KT3 6HZ
- Two Double Bedroom - Two Bathroom
- Split Level Period Maisonette
- Recently Refurbished Throughout
- Share Of Freehold - No Onward Chain
- Newly Fitted Kitchen and Bathrooms
- Easy Access to Motspur Park Station
- Easy Access to Raynes Park Station
- EPC -
- Council Tax Band -



For Free Mortgage Quote and Best Mortgage Rates, call Ellisons Mortgage Advisor on 0208 944 9595



Although these particulars are believed to be correct, their accuracy is not guaranteed and they do not form part of any contract.

Celebrating 30 years of successful Sales and Lettings in Merton

