



## The Highlands, Rickmansworth Guide Price: £800,000

[www.deykingharia.co.uk](http://www.deykingharia.co.uk)

Tel: 01923 953 953

112 High Street, Rickmansworth, WD3 1AQ

This period home is a fantastic example of the Met-Style 20's architecture, which this part of Rickmansworth is well known for.

The current owner has lovingly retained many of the character features such as the original flooring in the front and rear reception rooms, Crittall windows and original fireplaces in both receptions.

The homes on The Highlands are set on particularly wide plots, providing ample opportunity to extend and improve these properties over time.

The current property comprises an entrance hallway, a front dining room with fireplace and bay window, a rear reception room with doors to the garden, a large eat-in kitchen with separate utility room and an incredibly spacious downstairs W/C which is more than large enough to accommodate a walk-in shower.

On the first floor are three bedrooms, all of which are doubles, with the primary bedroom being particularly spacious at 17ft3 x 12ft7.

Finally, there is a spacious modern bathroom off the landing with separate W/C.

The mature south-west facing rear garden is primarily laid to lawn and is bordered by private hedgerows.

There is off street parking for several cars on the front driveway, with further on-street parking within the cul-de-sac.

The Highlands is in a popular enclave we refer to as the 'Lower Cedars', being connected to the Cedars Estate but with the benefit of being closer to the Town Centre and Station, both of which are within 10 minutes' walk from the door.

Local Schools include St Johns and St Peters Primary Schools, Charlotte House Prep, St Clements Danes, Rickmansworth School, The Royal Masonic School for Girls and Merchant Taylors.

For nature lovers, Rickmansworth's popular Aquadrome is also a 10 minute walk from the door, providing open green spaces to escape to.

The M25 is a short drive away, providing unbeatable links to London and The North.

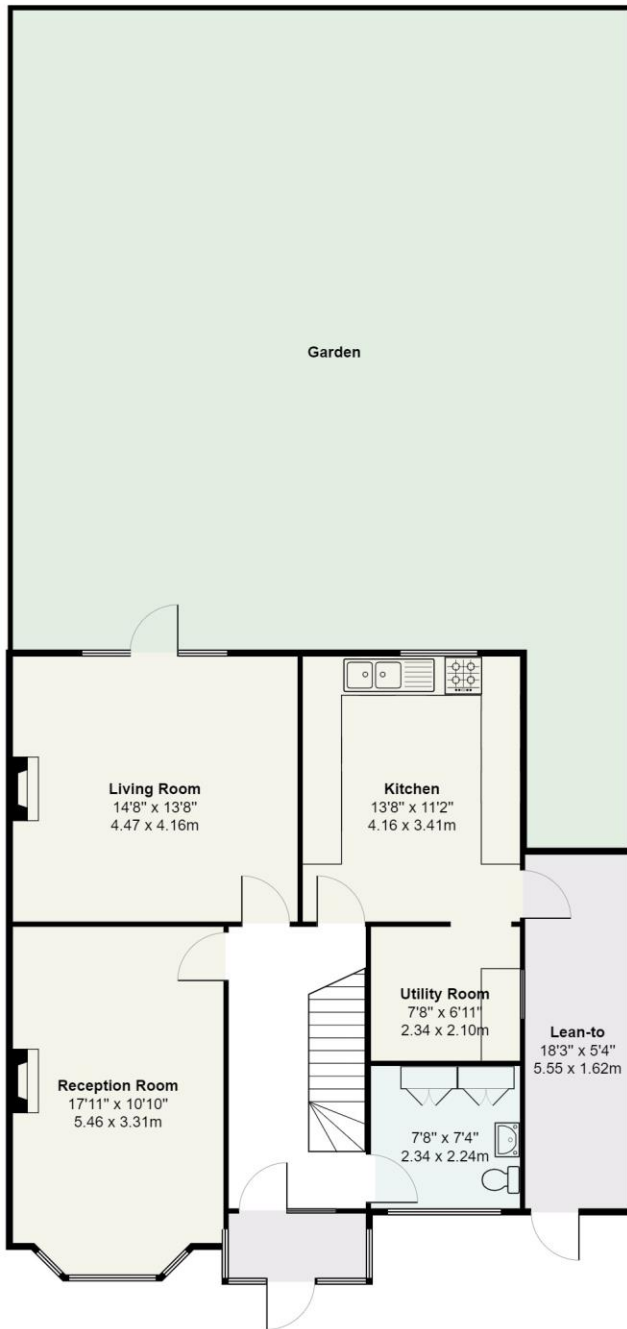




DKH

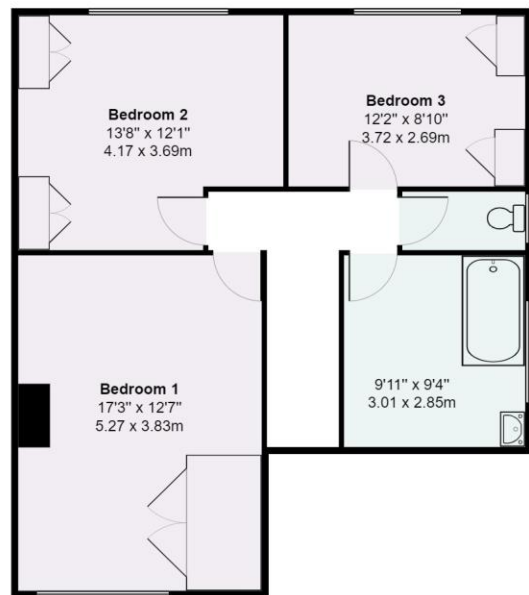


DKH



## The Highlands, Rickmansworth

Approximate Gross Internal Area = 1575 Sq Ft / 146.3 Sq M



This plan is not to scale and must be used as layout guidance only. All measurements and areas are approximate and should not be relied upon to provide accurate information. This plan must not be relied upon when making property valuations, design considerations or any other such relevant decisions. We accept no responsibility or liability (whether in contract, tort or otherwise) in relation to any loss whatsoever arising from or in connection with any use of this plan or the adequacy, accuracy or completeness of it or any information within it.

