

Brent Street, Hendon NW4

A deceptively spacious and well presented two double bedroom three bathroom (two Ensuites) situated on the first floor of this small purpose built development within walking distance of Hendon Central Tube station, moments from Brent shopping facilities and local amenities.

£440,000
Leasehold

Brent Street, Hendon NW4

Overview

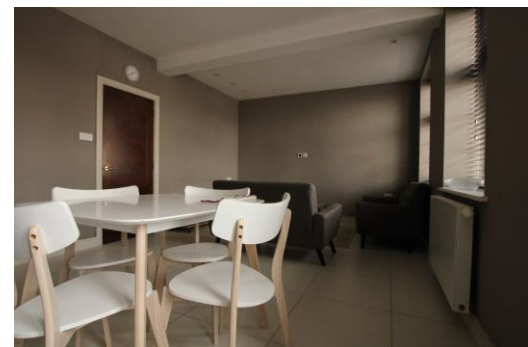
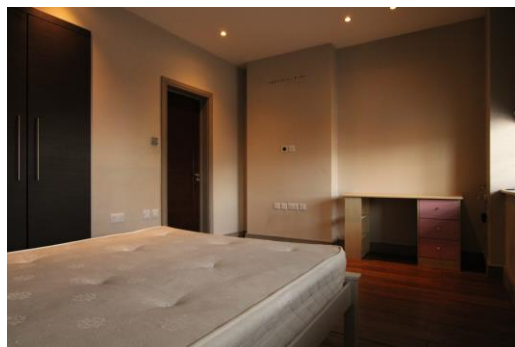
- TWO DOUBLE BEDROOMS
- THREE BATHROOMS (TWO ENSUITES)
- SPACIOUS LIVING ROOM/ OPEN PLAN KITCHEN
- WALKING DISTANCE OF HENDON CENTRAL TUBE STATION
- CONTEMPORARY STYLE INTERIORS
- CHAIN FREE
- SOLE AGENTS

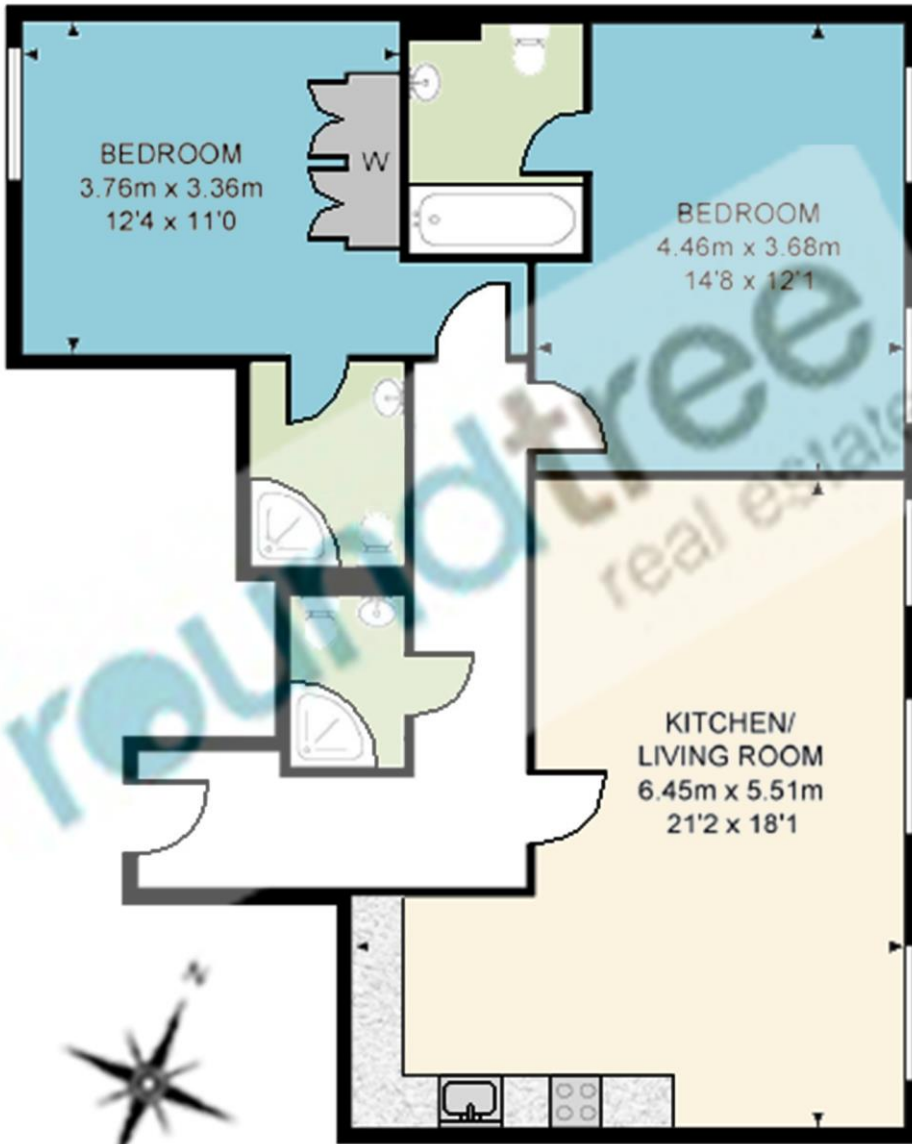


The property comprises of entrance hall with access to guest shower room, open plan fitted kitchen/reception room, two double bedrooms with both featuring En suite bathrooms.

The property is chain free.
Sole Agents.







1st Floor

BRENT STREET, NW4
TOTAL APPROX FLOOR AREA 837.43 SQ.FT. (80 SQ.M)

Whilst every attempt has been made to ensure the accuracy of the floor plan contained here, measurements of doors, windows, rooms and any other items are approximate and no responsibility is taken for any error, omission, or mis-statement. This plan is for illustrative purposes only and should be used as such by any prospective purchaser. The services, systems and appliance shown have not been tested and no guarantee as to their operability or efficiency can be given.
Made with Metropix 2022

Score	Energy rating	Current	Potential
92+	A		
81-91	B	83 B	83 B
69-80	C		
55-68	D		
39-54	E		
21-38	F		
1-20	G		

Selling your home?

If you are considering selling your home please contact us today for your no obligation free market appraisal.

Our dedicated and friendly team will assist you.
Get in touch today!



1 Sentinel Square, Brent Street, Hendon, NW4 2EL

020 8203 2111 • mail@theroundtree.com



www.theroundtree.com

General: While we endeavour to make our sales particulars fair, accurate and reliable, they are only a general guide to the property and, accordingly, if there is any point which is of particular importance to you, please contact the office and we will be pleased to check the position for you, especially if you are contemplating travelling some distance to view the property. Measurements: These approximate room sizes are only intended as general guidance. You must verify the dimensions carefully before ordering carpets or any built-in furniture. Services: Please note we have not tested the services or any of the equipment or appliances in this property, accordingly we strongly advise prospective buyers to commission their own survey or service reports before finalizing their offer to purchase. THESE PARTICULARS ARE ISSUED IN GOOD FAITH BUT DO NOT CONSTITUTE REPRESENTATIONS OF FACT OR FORM PART OF ANY OFFER OR CONTRACT. THE MATTERS REFERRED TO IN THESE PARTICULARS SHOULD BE INDEPENDENTLY VERIFIED BY PROSPECTIVE BUYERS OR TENANTS. NEITHER ROUND TREE NOR ANY OF ITS EMPLOYEES OR AGENTS HAS ANY AUTHORITY TO MAKE OR GIVE ANY REPRESENTATION OR WARRANTY WHATSOEVER IN RELATION TO THIS PROPERTY.