



Palmer & Partners



Palmer & Partners

**Lacey Street, Ipswich, Suffolk, IP4 2PH**

**Asking Price: £280,000**

# Lacey Street, Ipswich, Suffolk, IP4 2PH

Situated towards the popular east side of Ipswich falling within the Northgate School catchment (subject to availability), lies this nicely presented three bedroom semi-detached house which is being sold with no onward chain and benefits from a generous rear garden, integral garage, and off-road parking. As agents, we recommend the earliest possible internal viewing to appreciate the quality of accommodation on offer which comprises entrance hall, 22ft dual aspect lounge / dining room, kitchen, utility room, first floor landing, three double bedrooms, and newly fitted family bathroom.

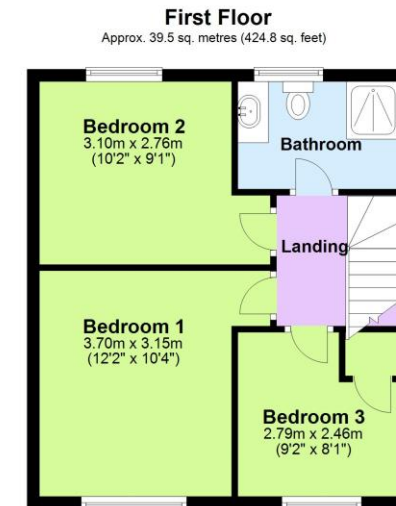
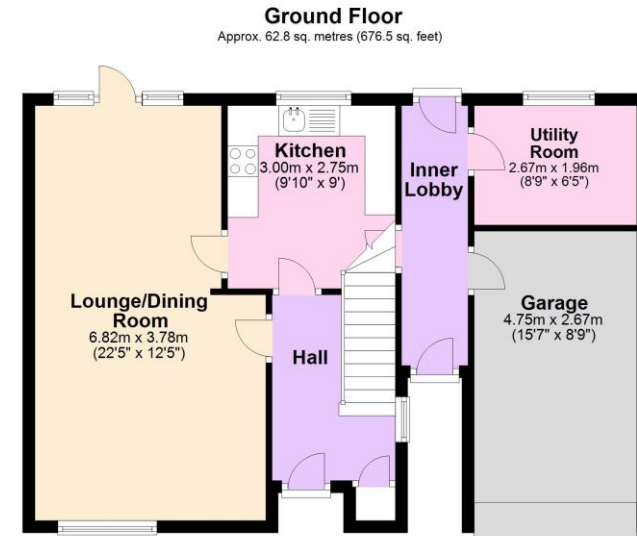
The county town of Ipswich offers a range of local amenities including schools, university, shops, doctors, dental surgeries, hospital, two theatres, parks including the popular Orwell Country Park, recreational facilities, and mainline railway station providing direct links to London Liverpool Street Station. The vibrant waterfront has undergone an extensive rebuilding and gentrification programme and now boasts some fashionable bars and restaurants, together with the University of Suffolk.

Council tax band: C

EPC Rating: TBC

## Accommodation & Amenities

- No Onward Chain
- Semi-Detached House
- Three Double Bedrooms
- 22ft Lounge/Dining Room
- Newly Fitted Bathroom
- Garage & Off-Road Parking



Total area: approx. 102.3 sq. metres (1101.3 sq. feet)

Although every attempt has been made to ensure the accuracy of this floorplan measurements of doors, windows, rooms and any other items are approximate and no responsibility is taken for any error, omission or mis-statement. This plan is for illustrative purposes only.  
Plan produced using PlanUp.



