



Fishers Lane, London, W4  
£1,375,000

**WHITMAN & CO.**

SALES · LETTINGS · COMMERCIAL





A rarely available period property in a superb central location moments from Chiswick High Road and Turnham Green Station. The house is extended into the loft and side return offering a good balance of living and entertaining space. The accommodation comprises a spacious double reception room with a bay window and fireplace, kitchen/breakfast room with a feature glazed roof, a lovely secluded sunny garden, principal bedroom with far-reaching views over the back common and ensuite shower room, two further double bedrooms, family bathroom, study, utility room/outside store. Fishers Lane runs north of Chiswick High Road offering close proximity to shops, cafes, restaurants, cinema, parks, two tube stations and numerous bus routes whilst also being in the catchment area of Belmont Primary School. No onward chain.





# Fishers Lane, W4

Approximate gross internal area

131.45 sq m / 1415 sq ft

(Including Eaves Storage & Utility Room)

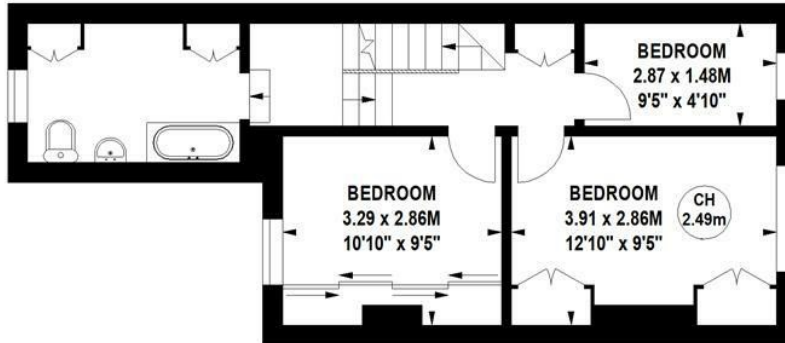
Eaves Storage

2.60 sq m / 28 sq ft

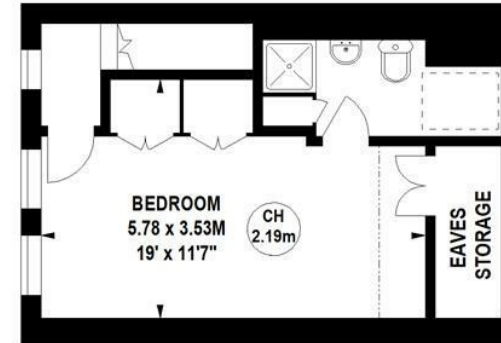
Utility Room

5.20 sq m / 56 sq ft

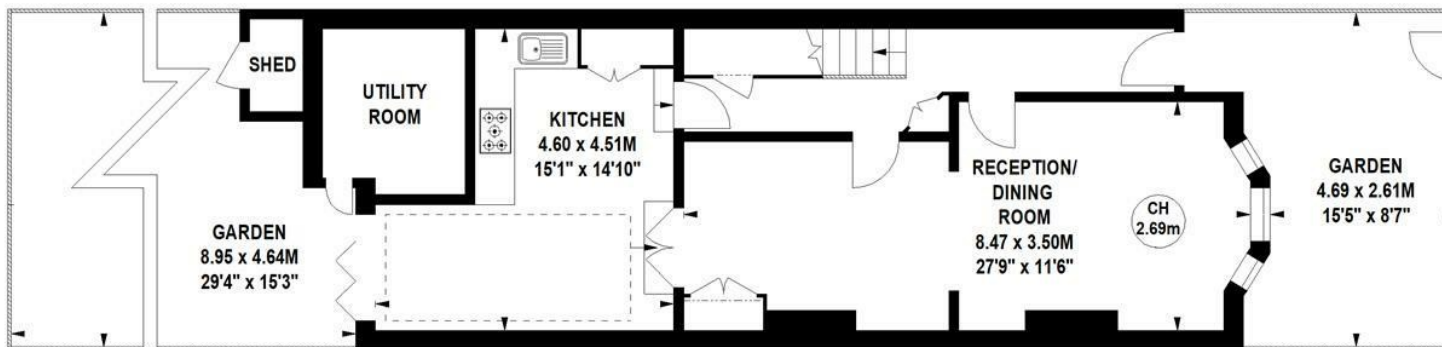
Key :  
CH - Ceiling Height



First Floor



Second Floor



Ground Floor

Not to scale, for guidance only and must not be relied upon as a statement of fact.  
All measurements and areas are approximate only

- Rarely available period property
- Extended into the loft and side return
- Sunny landscaped garden

- Sought after central location
- Fantastic transport links
- No onward chain

Tenure - Freehold  
Local Authority - Hounslow  
Council Tax - Band F



