

Langthorne Street

Fulham, London, SW6

 LAWSONRUTTER





Langthrone Street, London, Fulham, SW6





Langthorne Street

Fulham, London, SW6

Price Guide: £1,995,000

An outstanding family home, on one of Bishops Park's premier alphabet streets. Extending to 2,141 sq.ft. /198.9 Sq. M, this larger than average house has been recently refurbished to a very high standard by the current owners, using the finest materials, fixtures & fittings and technology.

The innovative design and excellent space planning offers, on the ground floor, a double reception room, a utility room, W.C. and stunning kitchen family room with bi-folding doors opening onto a large landscaped garden. On the first floor, there is a magnificent master bedroom suite with dressing area bathroom, as well as two further bedrooms and shower room.

The top floor comprises two double bedrooms and bathroom. Langthorne Street is ideally located for the newly landscaped Bishops Park, the Nuffield Health Club, Thames Path and excellent transport links to Hammersmith and Putney. Offering exceptional value, this is a must see property.



Superb family home * Newly refurbished to very high standard

Double reception room * Stunning kitchen family room

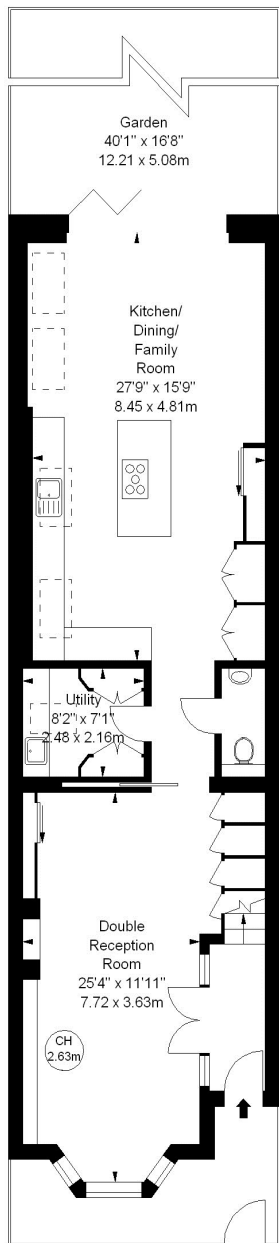
Utility room * Downstairs W.C.

Large landscaped garden

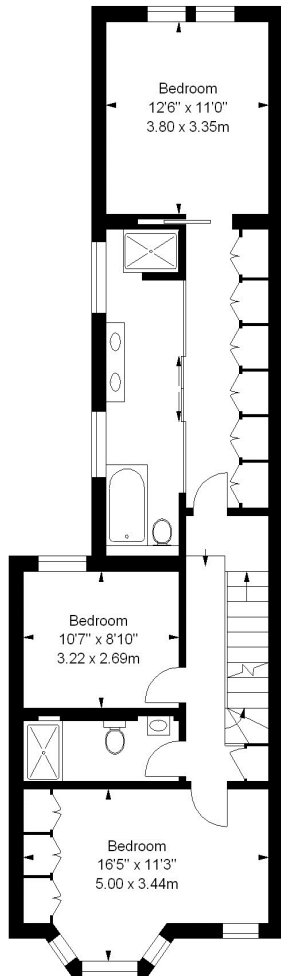
Impressive master bedroom with dressing area and bathroom

Four further bedrooms * Two further bedrooms

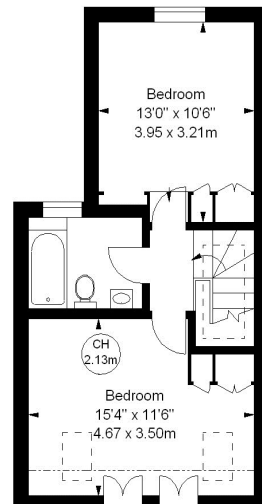
Close to Bishops Park, The Thames Path & Nuffield Health Club



Ground Floor
950 sq ft



First Floor
783 sq ft



Second Floor
408 sq ft

Langthorne Street, SW6
Approximate gross internal area
2,141 sq ft / 198.9 sq m



Key:
CH - Ceiling Height



Langthorne Street Fulham, London, SW6

Local Authority: *The Borough of Hammersmith & Fulham* * Tenure: *Freehold* * Price Guide: **£1,995,000**

All viewings by appointment
through our **Fulham Office:**

T: 020 7731 3636

E: fulham@lawsonrutter.com

347 Fulham Palace Road, London
SW6 6TB

www.lawsonrutter.com

In accordance with the Property Misdescription Act 1991, we wish to emphasise that the information given in these particulars is intended to help you decide whether you wish to view this property. Whilst every care is taken to ensure the accuracy of these particulars please note that all measurements are approximate and we are, for the accuracy of other information, reliant on what the seller has provided. We strongly recommend that you rely on your own inspections and those of your advisors to establish the details of any aspects which are of particular importance. Please note that we have not undertaken any survey of the property or the appliances within it and the buyer must rely on their own investigations prior to exchange of contracts.

Full Energy Performance Certificate available on request

