



Homewood Avenue, Cuffley



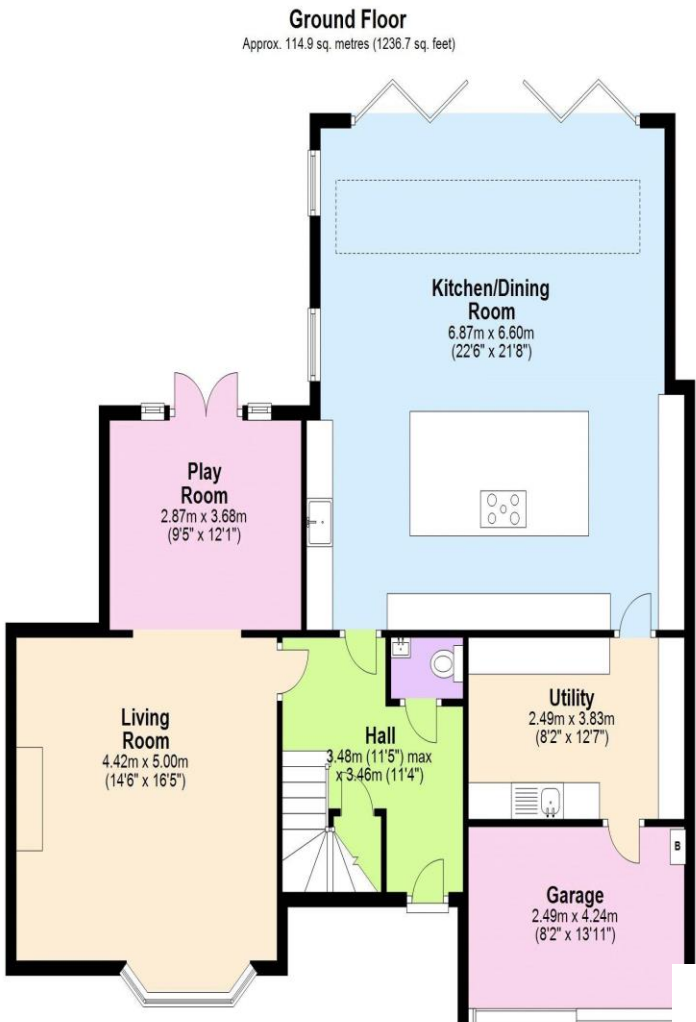
- SUPERROOM
- BI-FOLDING DOORS
- BEAUTIFULLY PRESENTED
- LARGE LOUNGE
- UTILITY ROOM
- 4 BEDROOMS
- LARGE EN-SUITE SHOWER ROOM
- OFF STREET PARKING
- SOUTH WEST FACING GARDEN



Homewood Avenue
Cuffley EN6 4QQ

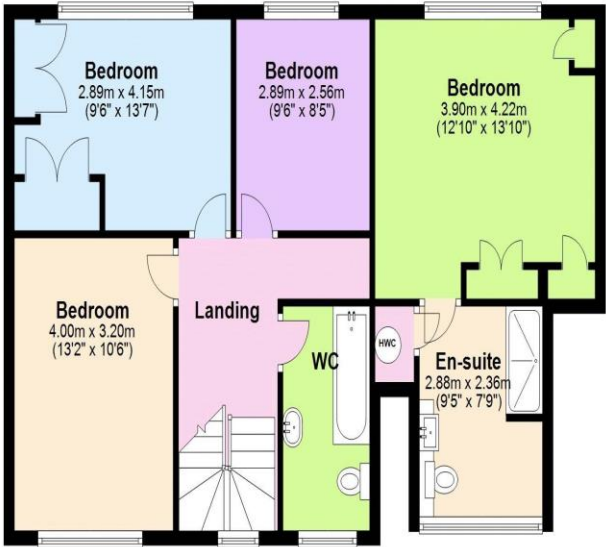
****SUPER ROOM** BI-FOLDING DOORS** CHAIN FREE** 4 BEDS 2 BATHROOMS**** A beautifully presented 4 bedroom home which features a 22ft by 21ft super room which comprises of a kitchen/living/dining room with bi-folding doors, sperate living room with dining area, down stairs cloakroom, large utility room. Upstairs the master bedroom has an excellent size en-suite shower room, there are 3 further bedrooms with a family bathroom. To the exterior there is a terrace and the mature rear garden is mainly laid to lawn. There is further storage space and off street parking.

Homewood Avenue is situated at the end of Tolmers Road, close to woodland walks, local shops and amenities and the overground railway station with it's direct links to Finsbury Park, Highbury & Islington and London Moorgate. There is a good selection of state and independent schooling locally including Cuffley JMI, Stormont, Lochinver, Dame Alice Owen and Queenswood.



Score	Energy rating	Current	Potential
92+	A		
81-91	B		
69-80	C		79 C
55-68	D	63 D	
39-54	E		
21-38	F		
1-20	G		

Approx. 73.2 sq. metres (787.8 sq. feet)



Total area: approx. 18