

Reckitt Road, London, W4 2BT

Guide Price £1,100,000

WHITMAN & CO.

SALES · LETTINGS · COMMERCIAL

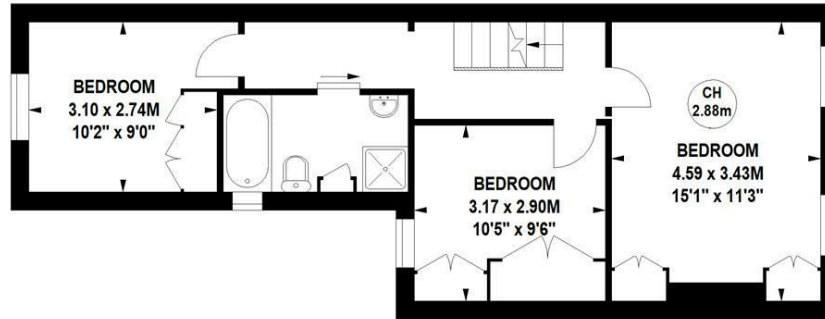
- Sought after Glebe Estate
- Fantastic transport links
- Close to numerous amenities
- South facing garden
- Large loft
- No chain

Tenure - Freehold
Local Authority - Hounslow
Council Tax - Band F

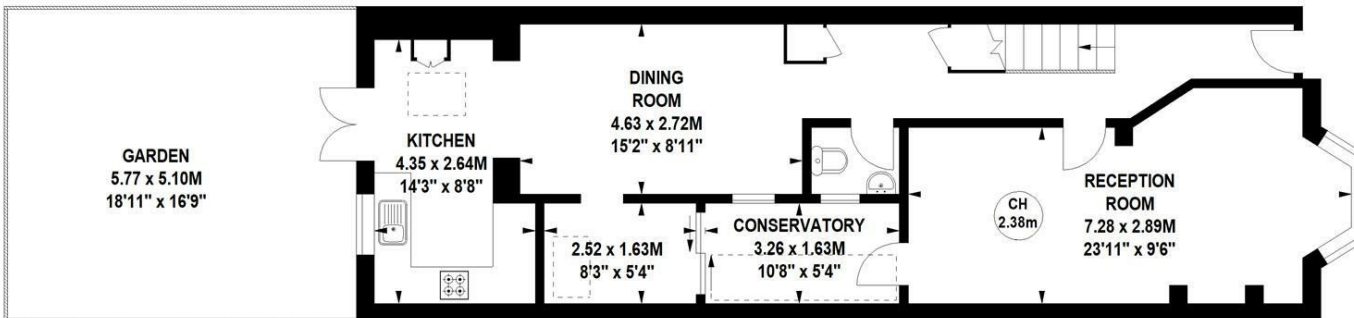
THE PROPERTY

An extremely sought-after three-bedroom period house, ideally located in the ever-popular Glebe Estate, with the added benefit of a private south-facing garden. The property features three double bedrooms, a large loft, a bathroom, a 23' through reception room, a kitchen/breakfast room, a cloakroom, and a private 20' south-facing garden. Ideally situated within close proximity to Turnham Green tube station and the extensive range of shops, bars, and restaurants on Chiswick High Road. No chain.

**Reckitt Road,
Chiswick, W4**
Approximate gross internal area
119.38 sq m / 1285 sq ft



First Floor



Ground Floor

Not to scale, for guidance only and must not be relied upon as a statement of fact.
All measurements and areas are approximate only

SITUATION



5-7 Turnham Green Terrace, Chiswick, London, W4 1RG

Tel 020 8747 8800

E-mail sales@whitmanandco.com

Website www.whitmanandco.com