

**Rutland Drive
Morden, SM4 5QQ**

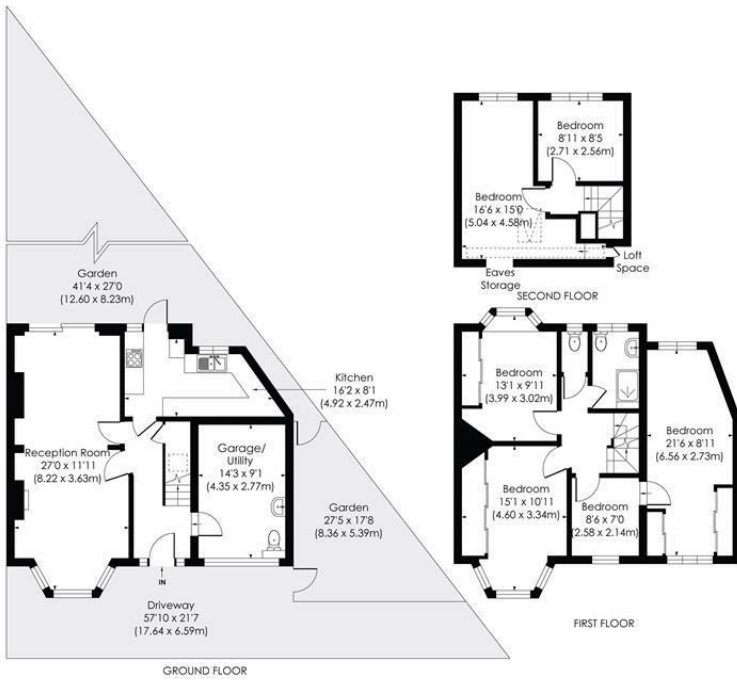
£699,950 Freehold



Spacious six bedroom, double fronted, end of terrace house is located in a sought after residential cul-de-sac. Benefitting from a 27 ft. through lounge and utility room, off street parking for up to five cars to the front and private rear and side gardens. This is a fantastic property for any families looking for a large home in the area. Book in your viewing and don't miss out on this lovely house.

RUTLAND DRIVE, SM4

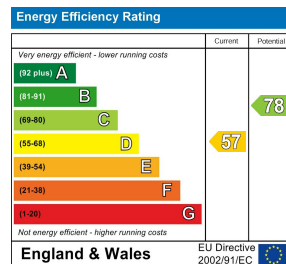
Approx. Gross Internal Floor Area
1573 Sq. ft/146.09 Sq. m (Excluding Eaves/Loft)



© Pixangle Property Marketing Ltd. info@pixangle.com Tel: 0208 870 2118
 This floor plan has been prepared for the purpose of illustration only in accordance with the latest RICS code of measuring practice and is not to scale. All measurements and areas are approximate and whilst every effort has been made to ensure the accuracy of the plan contained here, no responsibility is taken for any error, omission or misstatement.



- Double Fronted House
- Six Bedrooms
- Off Street Parking
- Sought After Residential Cul-De-Sac
- Spacious Throughout
- Private Garden
- EPC - D
- Council Tax Band - E



For Free Mortgage Quote and Best Mortgage Rates, call Ellisons Mortgage Advisor on 0208 543 1166



Although these particulars are believed to be correct, their accuracy is not guaranteed and they do not form part of any contract.

Celebrating 30 years of successful Sales and Lettings in Merton

