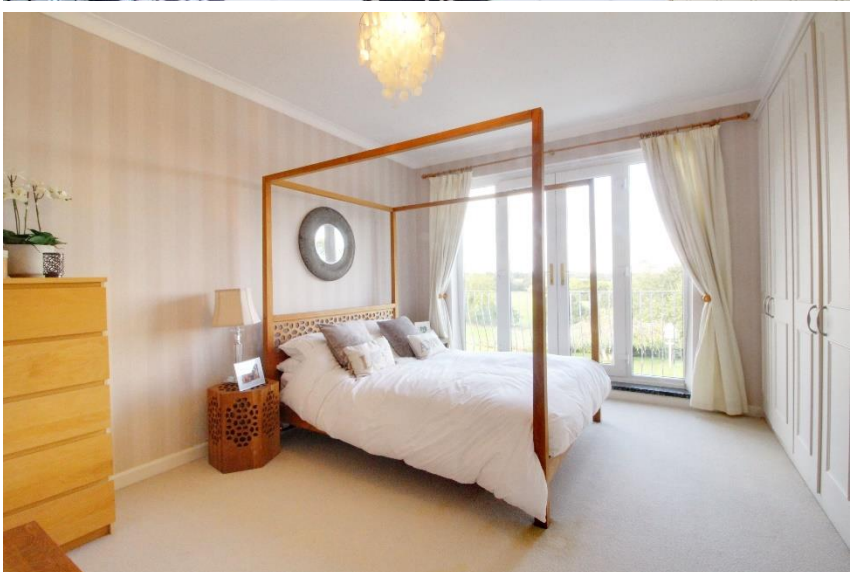




**New Park Road, Newgate Street Village**



- 4367 SQUARE FEET
- 4 RECEPTION ROOMS
- SPACIOUS ACCOMMODATION
- 4/5 BEDROOMS
- INDOOR SWIMMING POOL
- POTENTIAL ANNEX
- BACKING ONTO FIELDS
- GATED DRIVEWAY

**New Park Road**  
Hertford SG13 8RF

**\*\*SPACIOUS ACCOMMODATION\*\*4367 SQUARE FEET\*\*INDOOR SWIMMING POOL\*\*BACKING ONTO FIELDS\*\* Discover an extraordinary 4/5 bedroom detached home nestled in the tranquil heart of Newgate Street Village, offering a semi-rural charm and backing onto picturesque fields. Spanning an impressive 4,367 square feet, this deceptively spacious property boasts luxurious features including an indoor swimming pool and flexible living spaces. The ground floor comprises an inviting entrance hallway, a large dual-aspect living/dining room, a well-equipped kitchen breakfast room, a conservatory, and a playroom. One of the expansive reception rooms currently serves as bedroom 5, complete with its own private garden. The indoor swimming pool, enhanced by bi-folding doors, opens onto a balcony with stunning garden and countryside views. Additional features include a utility room and a shower room. Upstairs, four well-proportioned bedrooms offer ample space, with rear-facing rooms providing spectacular open countryside views. The master bedroom includes a bathtub and separate WC, alongside three further bedrooms and a family bathroom. Outside, the property boasts a large terrace leading to a mature garden, a spacious gated frontage with a lawn area, abundant parking, and a double garage. A separate courtyard-style garden also provides front access.**

Newgate Street Village itself is a very pretty and highly sought-after area, complete with a local primary school. It has a wonderful country feel, with a selection of family friendly pubs to choose from yet is still close to Cuffley's mainline railway station – with excellent commuter links into London.



New Park Road, Newgate Street, Hertford, SG13 8RF

Total Area: 405.7 m<sup>2</sup> ... 4367 ft<sup>2</sup> (excluding courtyard, balcony, roof terrace)

All measurements are approximate and for display purposes only