



Highfield Way, Rickmansworth Guide Price - £999,950

www.deykingharia.co.uk

Tel: 01923 953 953

112 High Street, Rickmansworth, Hertfordshire, WD3 1AQ

This excellent semi-detached family home has been beautifully designed and renovated throughout.

Stunning from the outside, this Met-Style home comprises an entrance hallway leading to all of the ground floor receptions, the first of which is a spacious living room to the front - which has the added benefit of an en-suite shower room and could be utilised as a fourth bedroom.

There is then a large, dual-aspect, full length reception with dining and living areas which spills effortlessly into the garden via German black-framed bifolding doors.

Off the hallway is a utility cupboard and pantry, and finally there is modern kitchen/breakfast room with granite worktops and limestone floors, which also has direct access to the stunning south-facing garden.

On the first floor are three bedrooms, all of which are double rooms. The primary and third bedrooms have fitted wardrobes, the primary is a particularly impressive room, measuring 17ft 3 x 14ft 10.

The bathroom and W/C have been kept separate, and both are enclosed at the end of the hallway. We loved the bathroom, particularly the rolltop tub.

When you step outside, the house truly comes into its own - this is one of the most beautiful gardens we've seen this year.

There is a patio abutting directly from the rear receptions, before you reach a large area of lawn, sheltered by mature hedgerows and decorated with raised beds and a winding path of flowers towards the end of the garden where you'll find two sheds/outhouses.

There is potential to continue to improve this home in the future, with space to extend to the rear, but for now this beautiful home will suit most family's needs.

Other highlights include a Rangemaster Excel Range Cooker, an integrated Neff microwave and beautiful wide panelled oak flooring.

Highfield Way is an incredibly popular residential road in The Cedars Estate in Rickmansworth.

This property is situated at the bottom of the hill, on a secluded crescent away from any road noise.

The house is approximately 10 minutes' walk to Rickmansworth Station and Rickmansworth Town Centre with its choice of coffee shops, restaurants and Supermarkets such as Waitrose and Marks & Spencer.

For the busy commuter, the M25 can be reached within a 5-minute drive. And families have their pick of schools include Clement Danes, Royal Masonic School for Girls, Merchant Taylors, Arnett Hills and Rickmansworth School.

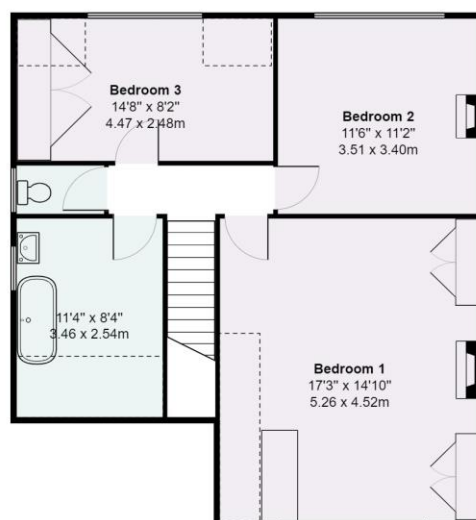






Highfield Way, Rickmansworth

Approximate Gross Internal Area = 1676 Sq Ft / 155.7 Sq M



This plan is not to scale and must be used as layout guidance only. All measurements and areas are approximate and should not be relied upon to provide accurate information. This plan must not be relied upon when making property valuations, design considerations or any other such relevant decisions. We accept no responsibility or liability (whether in contract, tort or otherwise) in relation to any loss whatsoever arising from or in connection with any use of this plan or the adequacy, accuracy or completeness of it or any information within it.

