

ALLAN FULLER
— EST. 1983 —

149 Upper Richmond Road, Putney, London, SW15 2TX

t: 020 8788 8822

e: putney@allanfuller.co.uk

www.allanfuller.co.uk

Hobbes Walk London, SW15

A well presented house to rent in the sought after Dover House Conservation Area.

On the ground floor there is one double bedroom, living room with doors leading out to the private garden and separate kitchen also with access out to the private garden. Upstairs there are two further double bedrooms and a bathroom with shower over the bath.

The property has just been redecorated and had new carpets installed. Offered furnished, available now.

Council tax band D Wandsworth borough

5 week security deposit required

EPC rating D



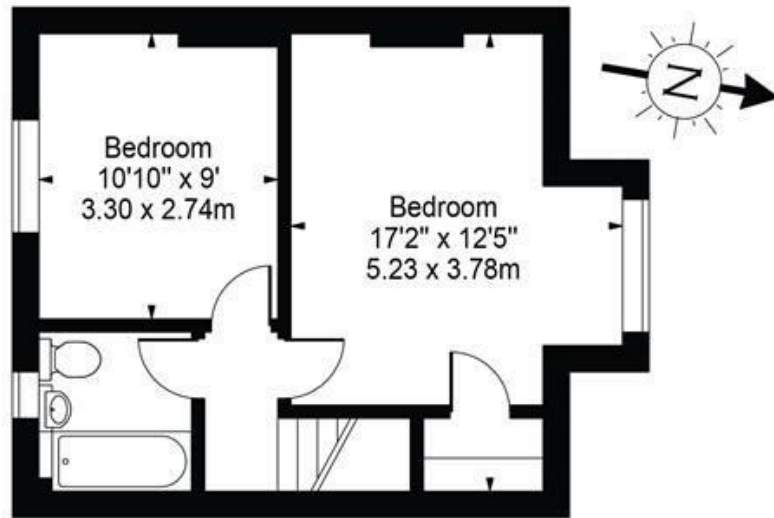
£2,500 Per Month



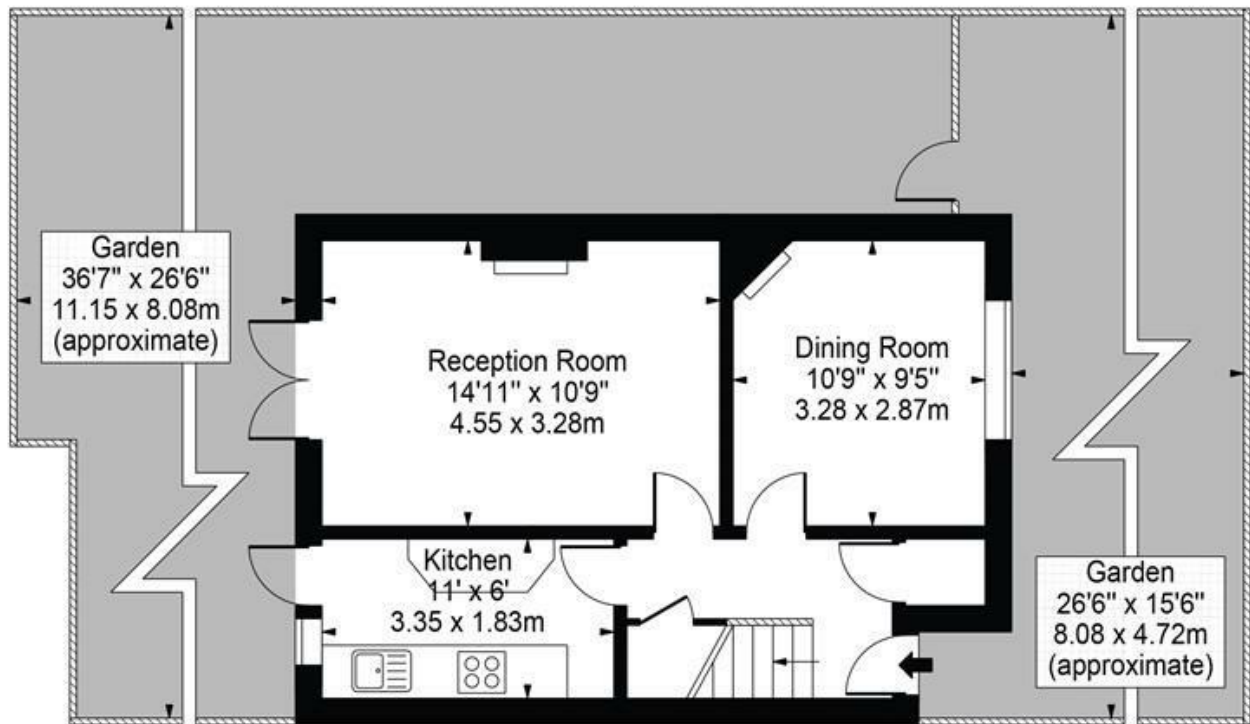


Hobbes Walk, SW15

Approx. Gross Internal Area 765 Sq Ft - 71.07 Sq M



First Floor



Ground Floor

ALLAN FULLER
EST. 1983

©

For Illustration Purposes Only - Not To Scale Floor Plan by Mira Nikolova Photography

This floor plan should be used as a general outline for guidance only and does not constitute in whole or in part an offer or contract. Any intending purchaser or lessee should satisfy themselves by inspection, searches, enquiries and full survey as to the correctness of each statement. Any areas, measurements or distances quoted are approximate and should not be used to value a property or be the basis of any sale or let.

With regards to any information supplied by us in relation to lease, ground rent and service charge it is essential that you have this information checked by your solicitor. We have transmitted information supplied to us by the vendor of the property but we have not been able to inspect the lease to check its accuracy. Please note that we have not tested any of the equipment or utilities at this property, nothing in these particulars shall be deemed a statement that the property is in good condition or otherwise nor that any of the services or facilities are in good working order. Measurements are approximate they were taken with a sonic tape, are as accurate as possible and usually measured from the widest point of any room. Description provided herein represents the opinion of the author, is given in good faith but should not be constructed as statements of fact. The particulars and photograph are for guidance only.