



Maple House

Causeway End | Felsted | CM6 3LS



Exclusively Group
Real Estate

Step inside

Maple House

Reinvented by the current owners, Maple House provides fantastic open plan living accommodation to the ground floor, connecting with the private gardens with extensive views over open farmland. There is also a snug living room and WC.

Upstairs the property offers an extensive principal bedroom suite comprising dressing area, spacious bathroom and bedroom, as well as offering two further bedrooms and a family bathroom.

Further accommodation is provided above the cart lodge / garage and consists of a large office and store room area.

Externally there are gardens and driveway to the front, then passing through electronically controlled gates to a private courtyard and the rear gardens and cart lodge.

The specification and finish of the property is to a very high standard.

















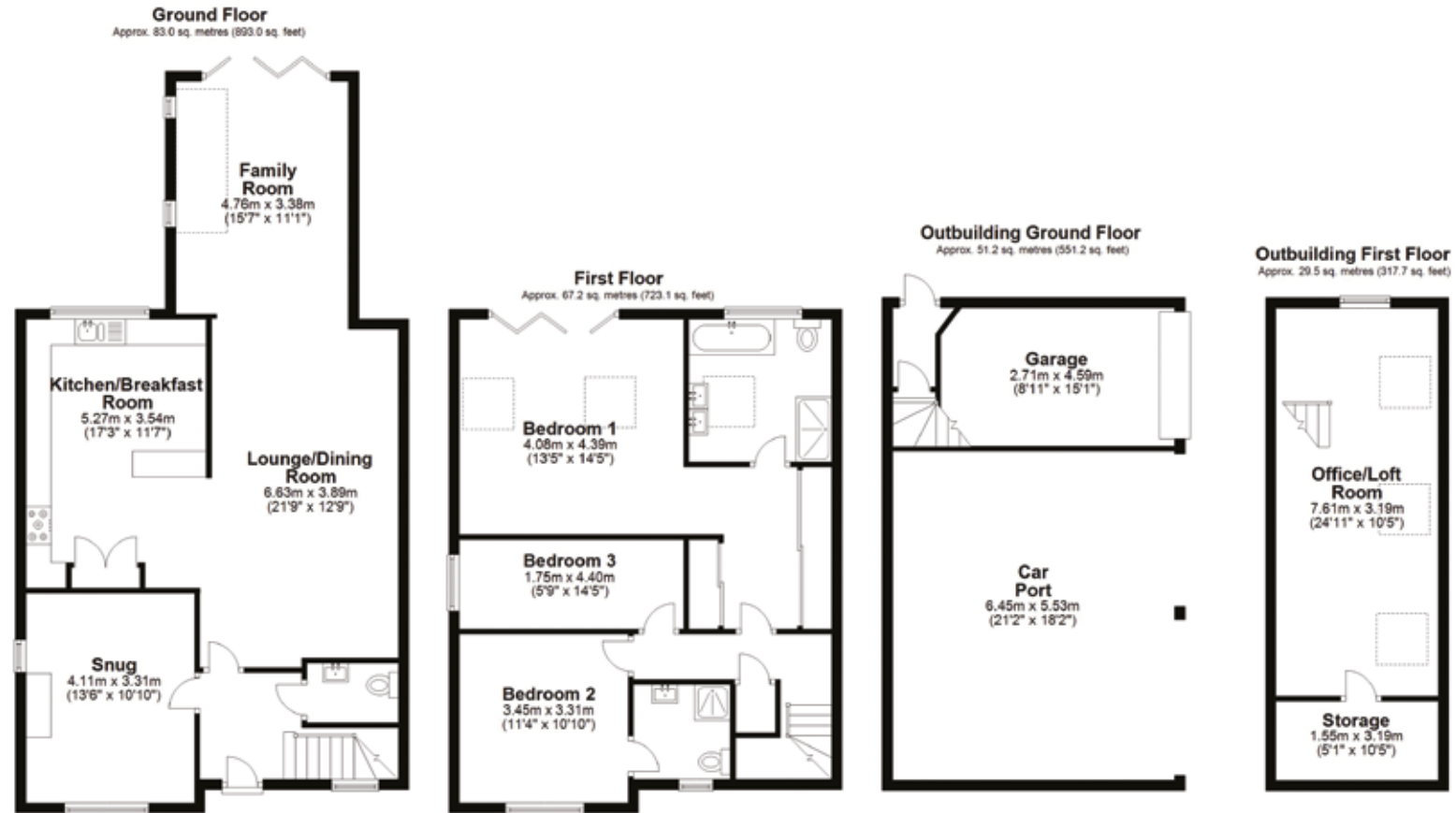












Total area: approx. 230.9 sq. metres (2485.0 sq. feet)

FOR ILLUSTRATIVE PURPOSES ONLY. NOT TO SCALE
Whilst every attempt has been made to ensure the accuracy of the floor plan shown, all measurements, positioning, fixtures, features, fittings and any other data shown are an approximate interpretation for illustrative purposes only and are not to scale. No responsibility is taken for any error, omission, mis-statement or use of data shown.
Property marketing provided by www.matthewkyle.co.uk

EPC ?

Agents notes: All measurements are approximate and for general guidance only and whilst every attempt has been made to ensure accuracy, they must not be relied on. The fixtures, fittings and appliances referred to have not been tested and therefore no guarantee can be given that they are in working order. Internal photographs are reproduced for general information and it must not be inferred that any item shown is included with the property. For a free valuation, contact the numbers listed on the brochure. Copyright © 2022 Exclusively Group Real Estate. Registered in England. Company Reg No. 14052310 Registered Office: Imperial House Victoria Place Chelmsford CM1 1NY Exclusively Group Real Estate is a trading style of TEGRE Limited.



Exclusive Group Real Estate

Imperial House, Cottage Place, Victoria Road, Chelmsford, CM1 1NY

Tel: +44 (0)1245 200365 | exclusivelygroup.com