



19 Chedworth Street, Newnham,
Cambridge, CB3 9JF

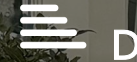
Guide price £850,000



1



2



D

19 Chedworth Street

Cambridge, CB3 9JF

- 3 bedroom Victorian home in Newnham
- Refitted kitchen and bathroom
- No chain

A 3 bedroom bay-fronted Victorian house in a lovely position near Newnham Croft School and offered with no chain.

This attractive mid-terrace home has been extended on the ground floor and is well-maintained and improved throughout.

The original stained glass door leads to the hallway which has stairs to the first floor and original corbels. The stripped floorboards lead through to the living/dining room which has 2 fireplaces (currently blocked) and a bay window to the front aspect. There is a useful understairs storage cupboard. The kitchen has recently been refitted and has an oven, hob and extractor. This leads through to the breakfast room which has sliding patio doors to the garden. There is a small lobby where the gas boiler is located and also a cloakroom and WC.

Upstairs, the landing has storage and access to the loft, which has a Velux window. The main bedroom spans the front of the house and has stripped floorboards and plenty





of fitted wardrobes. There are two further bedrooms both with original fireplaces. The bathroom has been refitted and has a shower over the bath, full wall tiling and a towel rail.

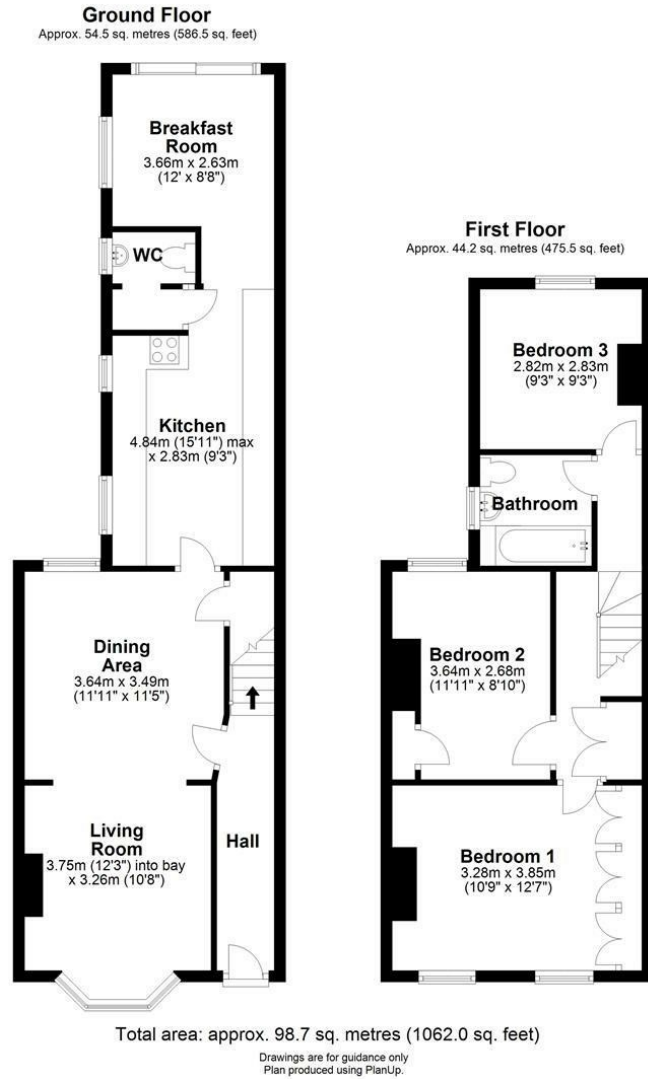
The house has gas central heating, original sash windows, and has recently been re-decorated.

Outside at the front is a small garden. Shared pedestrian access leads to the rear garden which is enclosed and mainly lawn, and there is a timber shed.

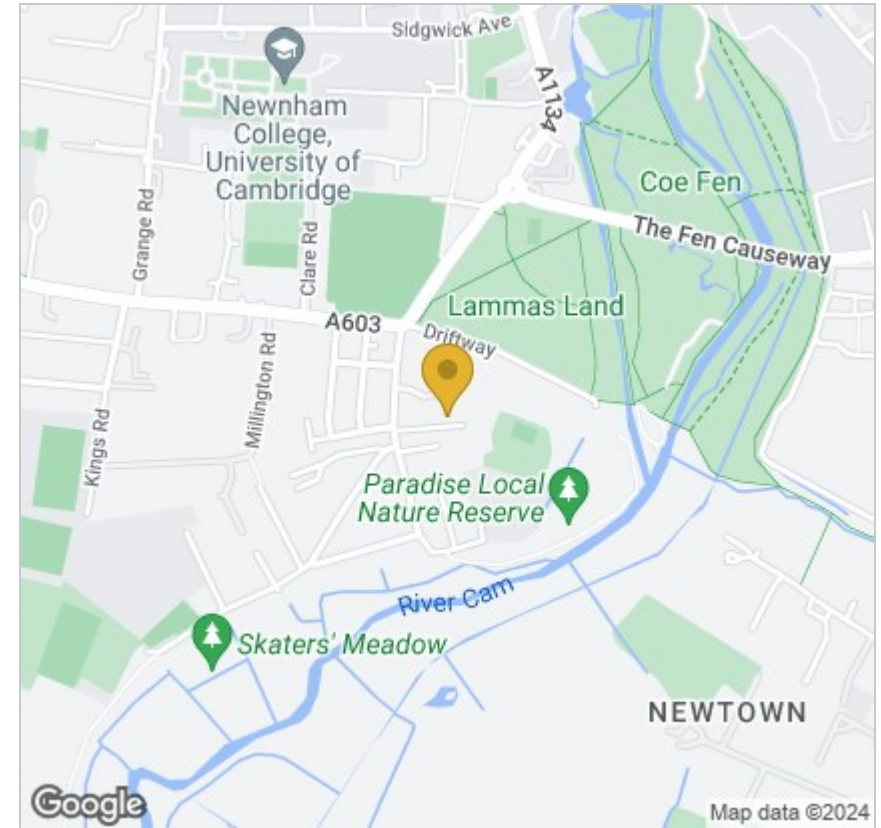
Chedworth Street is situated in the Newnham area of Cambridge, arguably one of the best residential locations in the City. There is a wide variety of excellent local facilities including a small supermarket and numerous independent shops such as a post office, chemist, bakers, butchers, and grocers. Lammas Land Recreation Ground, with a large children's play area, tennis court, and paddling pool, is within walking distance. SAT NAV: CB3 9JF What3words: [///sprint.grit.care](http://sprint.grit.care)



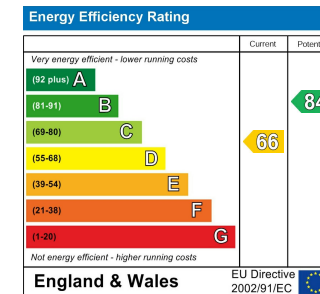
Floor Plan



Area Map



Energy Efficiency Graph



Viewing: Please contact our Gray & Toynbee - Cambridge Office on 01223 439 888 if you wish to arrange a viewing appointment for this property or require further information.

Tenure: Freehold
Council tax band: F

These particulars, whilst believed to be accurate are set out as a general outline only for guidance and do not constitute any part of an offer or contract. Intending purchasers should not rely on them as statements of representation of fact, but must satisfy themselves by inspection or otherwise as to their accuracy. No person in this firm's employment has the authority to make or give any representation or warranty in respect of the property.

154-156 Victoria Road, Cambridge, CB4 3DZ
Tel: 01223 439 888 Email: theteam@grayandtoynbee.com

