

**SW19**

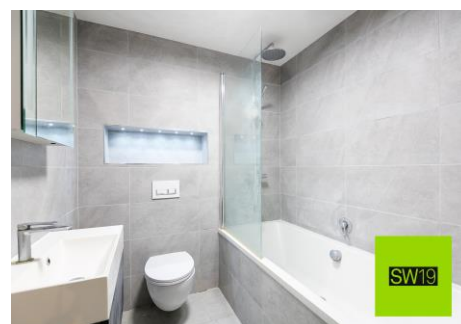
*'it's all in the postcode...'*



**Harland Close,**

**£0**

- Spacious apartment
- Two bedrooms
- Purpose built
- Merton Park location
- Off street parking



020 8544 2828

Wimbledon: Wimbledon Park: Colliers Wood

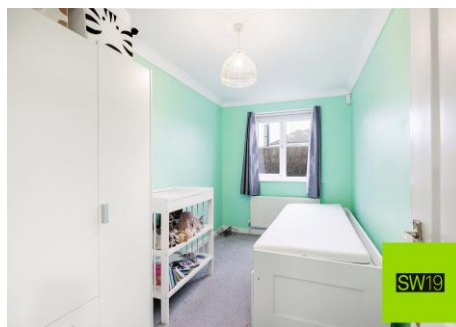
[www.SW19.com](http://www.SW19.com)

SW19 Estate Agents Ltd. Is registered in England & Wales No. 05508737

*'it's all in the postcode...'*



A beautifully presented two bedroom, purpose-built apartment, situated in the highly sought-after Merton Park location. Nestled in a peaceful cul-de-sac, this charming home offers a perfect blend of tranquillity and convenience. Just a short walk from the Northern Line tube station, it provides excellent access to central London. The apartment is thoughtfully maintained throughout, making it an ideal choice for those looking for modern living in a prime residential area.



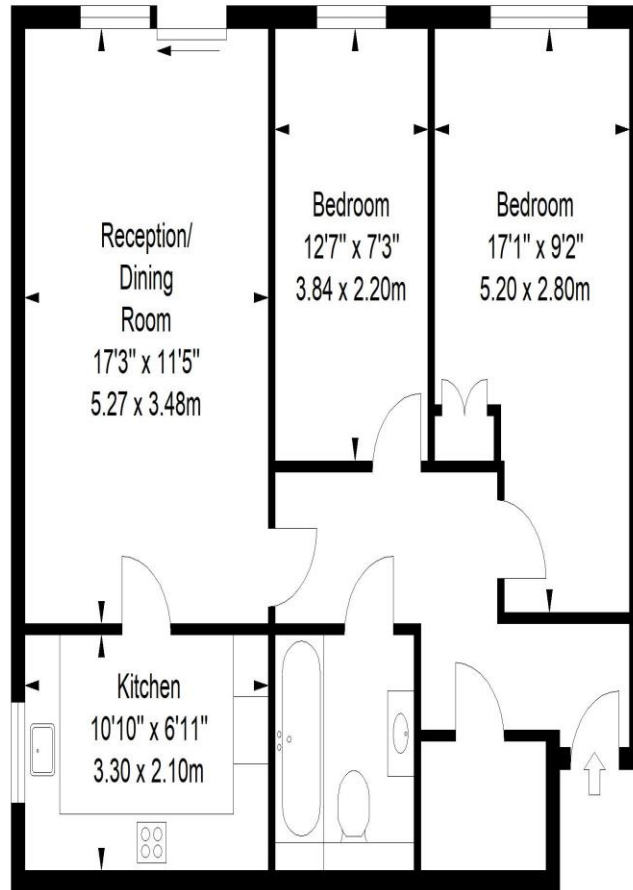
020 8544 2828  
Wimbledon: Wimbledon Park: Colliers Wood  
[www.SW19.com](http://www.SW19.com)  
SW19 Estate Agents Ltd. Is registered in England & Wales No. 05508737  
*'it's all in the postcode...'*

## Naish House



Approximate Gross Internal Area

688 sq ft / 63.93 sq m



Ground Floor

ILLUSTRATION FOR IDENTIFICATION PURPOSES ONLY

ALL MEASUREMENTS ARE MAXIMUM, AND INCLUDE WINDOW BAYS AND WARDROBES WHERE APPLICABLE  
THIS PLAN MUST NOT BE REPRODUCED BY ANY OTHER PERSON WITHOUT PERMISSION

SW19

These particulars are for guidance only and should not be relied upon as a statement or representation of fact. All measurements given are approximate only and should not be relied upon for ordering carpets, equipment etc. Purchasers should satisfy themselves by inspection or otherwise as to the accuracy of the

020 8544 2828

Wimbledon: Wimbledon Park: Colliers Wood

[www.SW19.com](http://www.SW19.com)

SW19 Estate Agents Ltd. Is registered in England & Wales No. 05508737

*'it's all in the postcode...'*

statements contained within. Neither SW19 estate agents ltd or related companies or their employees can confirm structural conditions of the property or that any appliances or other facilities are in working order. Purchasers are strongly recommended to arrange their own survey.

---

020 8544 2828

Wimbledon: Wimbledon Park: Colliers Wood

[www.SW19.com](http://www.SW19.com)

SW19 Estate Agents Ltd. Is registered in England & Wales No. 05508737

*'it's all in the postcode...'*