



Duke Road, London, W4 2DD

Guide Price £1,550,000

WHITMAN & CO.

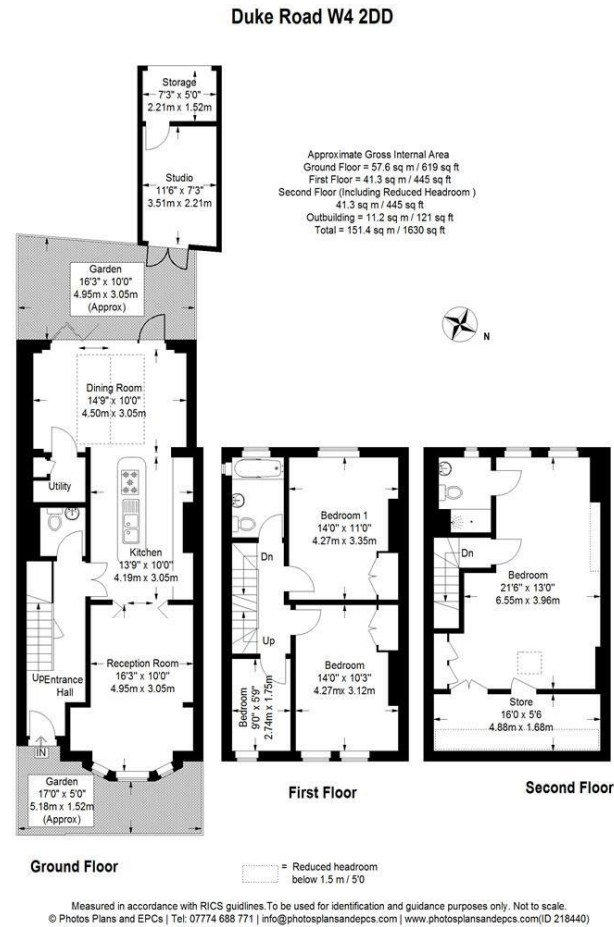
SALES · LETTINGS · COMMERCIAL

- Sought after Glebe estate
- Fantastic transport links
- Close to all amenities
- Garage (currently arranged as office and storage)
- 28' Open plan kitchen/dining room
- West facing patio garden

Tenure - Freehold
Local Authority - Hounslow
Council Tax - Band F

THE PROPERTY

A well presented four bedroom period house ideally located in this prestigious tree lined residential street running South off Chiswick High Road with the added benefit of a garage/studio. This superb family house comprises four bedrooms, luxury ensuite and second bathroom, formal living room, 28' fully integrated kitchen/dining/family room, utility room, cloakroom, private west facing patio garden, garage (currently arranged as office and ancillary storage). Duke road is ideally located in the ever popular Glebe Estate offering close proximity to Turnham Green tube station and the extensive bars, shops and restaurants on Chiswick High Road. No onward chain.



SITUATION



5-7 Turnham Green Terrace, Chiswick, London, W4 1RG

Tel 020 8747 8800

E-mail sales@whitmanandco.com

Website www.whitmanandco.com