



Grove Park Terrace, London, W4  
Guide Price £1,600,000

**WHITMAN & CO.**

SALES · LETTINGS · COMMERCIAL





A beautifully refurbished and extended period property located on this sought-after residential road in the heart of Grove Park moments from Strand on the Green riverside and Chiswick station. The house is stylishly presented throughout with the accommodation comprising a 15'8" reception room with bay window and wood burner, stunning 32'8" kitchen/dining/family room, a good size landscaped west facing garden, four double bedrooms, family bathroom with separate shower, ensuite bathroom, cloakroom, excellent storage throughout, front garden. Grove Park Terrace is a pretty tree-lined residential street in the catchment area of two OFSTED rated 'Outstanding' primary schools and within a short walk of The River, Chiswick House and Grounds and numerous other amenities. Transport links include Chiswick (mainline) and Gunnersbury (District and Overground) stations, local bus routes and the A4/M4 for routes in and out of London.

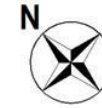




# Grove Park Terrace, W4

Approximate gross internal area

151.61 sq m / 1632 sq ft



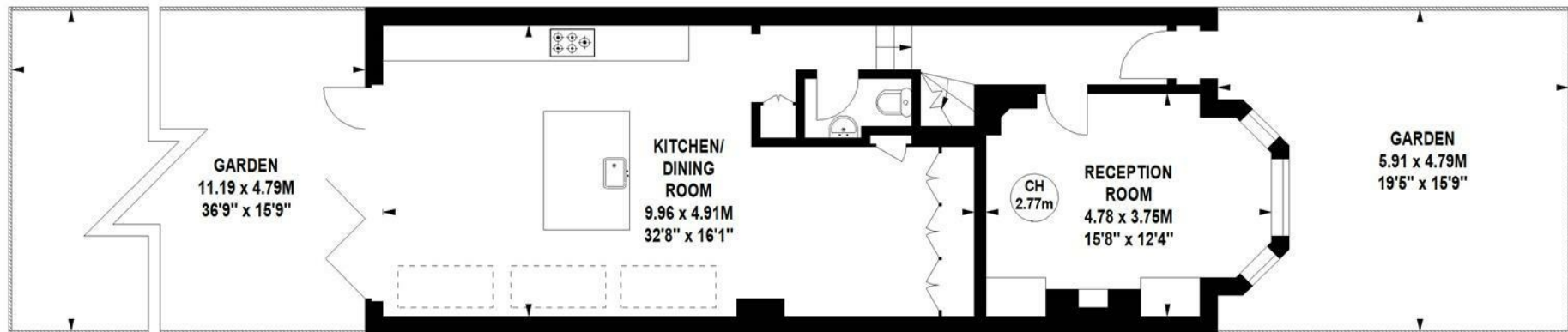
Key :  
CH - Ceiling Height



Second Floor



First Floor



Ground Floor

Not to scale, for guidance only and must not be relied upon as a statement of fact.  
All measurements and areas are approximate only

- Four bedroom period family home
- Stunning 32'8 kitchen/dining/family room
- 15' Reception room with bay window

- Sought after residential street
- Landscaped west facing garden
- Close to numerous amenities

Tenure - Freehold  
Local Authority - Hounslow  
Council Tax - Band G



