



7 Grove Road, Repps With Bastwick
£285,000

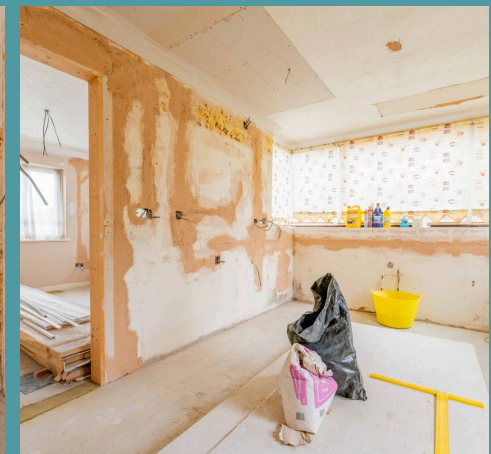
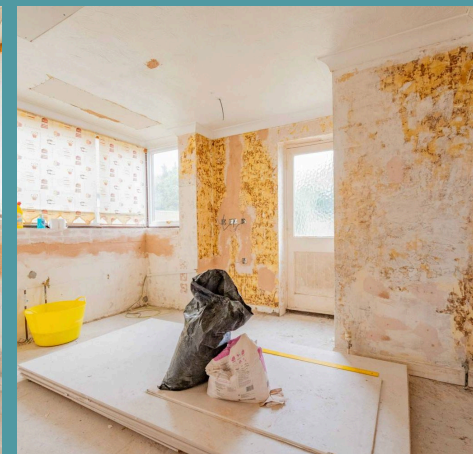
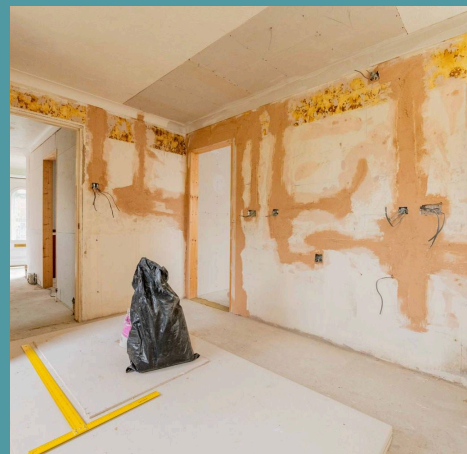
7 Grove Road

Repps With Bastwick, Great Yarmouth

Opportunity to acquire a complete renovation project on a generous plot, offering endless potential. This three-bedroom property features a versatile ground floor layout with three adaptable rooms and a WC, all filled with natural light. While the home requires modernisation and the addition of a bathroom, it provides the perfect blank canvas for reconfiguration and customisation. Outside, the property boasts a substantial frontage with ample parking, a garage, and a spacious rear garden, offering further potential for extension (STPP). Ideal for investors or buyers seeking a prime location and a rewarding project, this home is ready to be transformed.

The Location

In Repps With Bastwick, residents can find local schools offering primary education, such as Repps with Bastwick Primary School. For shopping needs, there are convenience stores in nearby villages, while Great Yarmouth is just a short drive away (6 miles), providing a wider selection of shops, supermarkets, and services. The village atmosphere is complemented by community events, making it an ideal location for families seeking a peaceful lifestyle with access to educational and retail facilities.





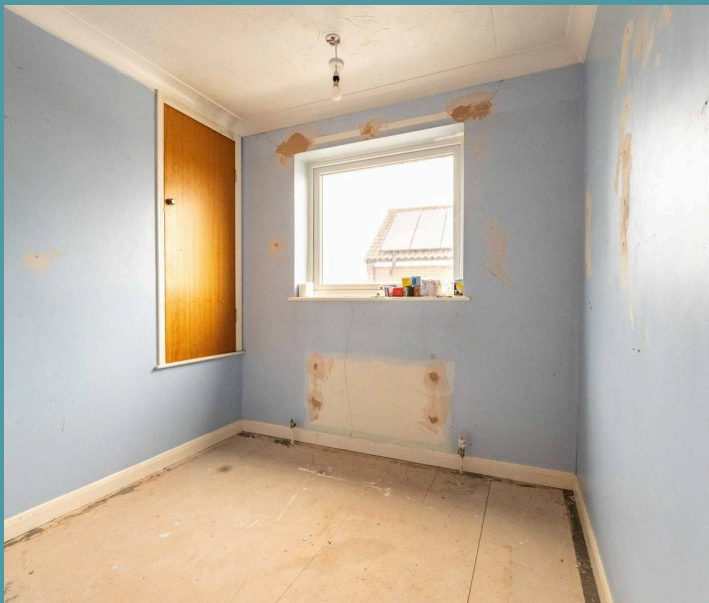
7 Grove Road

Repps With Bastwick, Great Yarmouth

Grove Road

This three-bedroom home, set on an excellent sized plot, offers a unique opportunity for those with a vision to create their dream property. A blank canvas brimming with potential, the ground floor features three versatile rooms alongside a convenient WC.

Flooded with natural light, these spaces can be reconfigured to suit your preferences, whether you're looking to create open-plan living areas or maintain separate zones for dining, relaxation, or work. The current layout requires some modernisation, with no existing bathroom in its configuration, but offers endless possibilities for customisation.



Outside, the property continues to impress with its substantial frontage, ample parking and a garage. The rear garden is equally generous, offering space for entertaining, gardening, or future expansion, subject to planning permission (STPP).



7 Grove Road

Repps With Bastwick, Great Yarmouth

This is an ideal purchase for investors or buyers seeking a prime location and the chance to craft a home perfectly tailored to their needs. Whether you're looking to extend, redesign, or simply add value, this property provides the foundations to bring your vision to life.

Agents Note

Sold Freehold.

Connected to mains water, electricity and draiange.

Oil Fired Heating

- Opportunity to transform a three-bedroom home into your dream property
- Set on a generous plot offering ample space and potential
- Adaptable ground floor layout with three versatile, well-lit rooms
- Includes a convenient ground floor WC
- Substantial frontage providing extensive parking space
- Potential for significant extension or reconfiguration, subject to planning permission (STPP)
- Blank canvas ideal for investors or buyers seeking a rewarding renovation project

