



Ramsay Road, London, W3 8AZ

Guide Price £695,000

WHITMAN & CO.

SALES · LETTINGS · COMMERCIAL

- Charming period cottage
- South facing garden
- Kitchen/breakfast room
- Potential to extend STPP
- 24'7 Through reception room
- Close to numerous transport facilities

Tenure - Freehold
Local Authority - Ealing
Council Tax - Band E

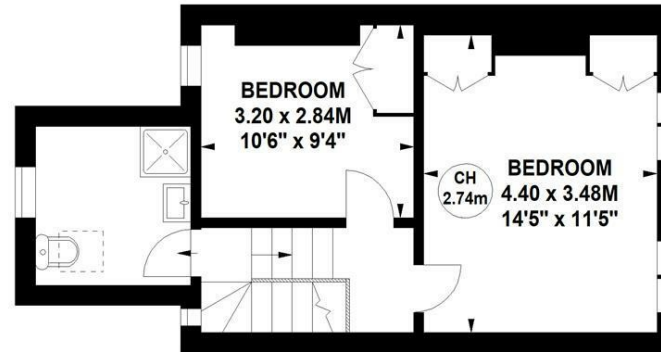
THE PROPERTY

A charming period cottage that benefits from lovely natural light located on this residential street close to numerous amenities. The accommodation comprises a front garden, entrance hallway, 24'7 through reception room with high ceilings, bay window and fireplace, recently fitted kitchen/breakfast room, south-facing patio garden, full-width master bedroom, second double bedroom, shower room, large loft and extensive built-in storage throughout. The house can be extended into the loft and side return STPP. Ramsay Road is conveniently located being a short walk to South Acton (Overground) and Acton Town (District and Piccadilly line) stations, Acton and Chiswick High Streets and a number of local shops, cafes and restaurants.

Ramsay Road, W3

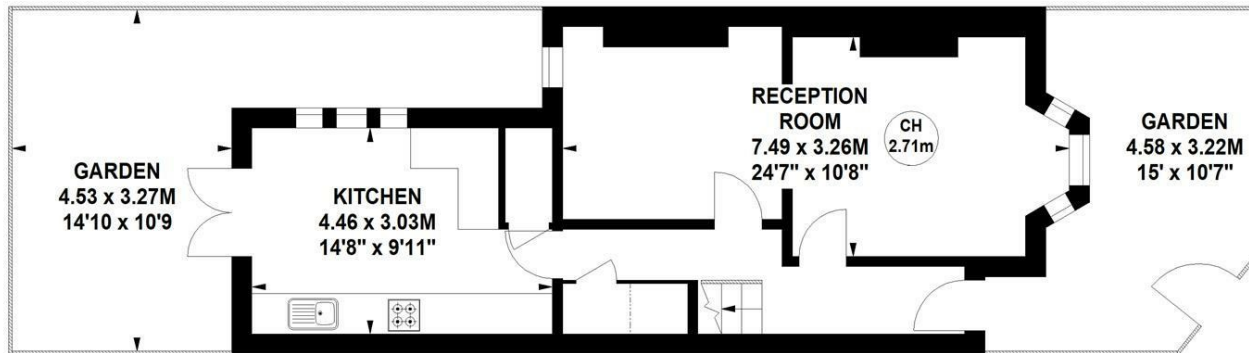
Approximate gross internal area

80.36 sq m / 865 sq ft



First Floor

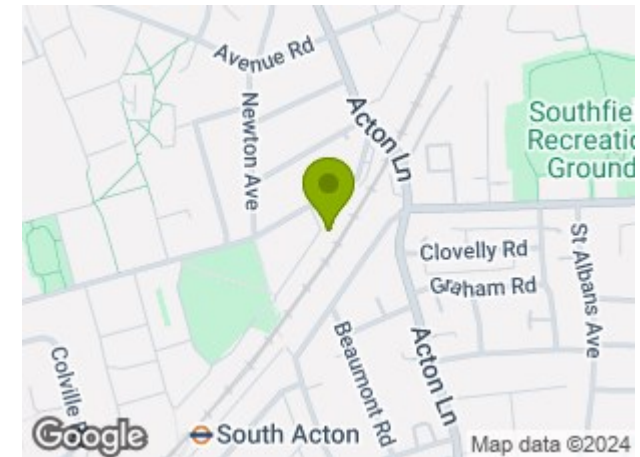
Key :
CH - Ceiling Height



Ground Floor

Not to scale, for guidance only and must not be relied upon as a statement of fact.
All measurements and areas are approximate only

SITUATION



5-7 Turnham Green Terrace, Chiswick, London, W4 1RG

Tel 020 8747 8300

E-mail sales@whitmanandco.com

Website www.whitmanandco.com