



Ashleigh Court, Rickmansworth

£345,000

www.deykingharia.co.uk

Tel: 01923 953 953

112 High Street, Rickmansworth, Hertfordshire, WD3 1AQ

This fantastic two bedroom ground floor apartment is located just moments from Rickmansworth's bustling High Street.

The property comprises an entrance hallway, two spacious double bedrooms, a large reception room, a separate galley kitchen with larder storage and a modern shower-room off the hallway.

Whilst the flat requires some cosmetic updating in areas, we were hugely impressed with the space available, particularly in the main reception room. The property has great potential, because of its size, and a new owner has the opportunity to create a truly excellent flat in the centre of Rickmansworth.

Rickmansworth Station and Waitrose are both just a few minutes walk from the door, whilst the M25 is less than 5 minutes drive away.

The flat comes with residents parking and a garage within the block.

There is a long lease of over 900 years, the service charge is £401.54 per quarter and the ground rent is £100 per annum.

This property is being sold on a chain free basis.

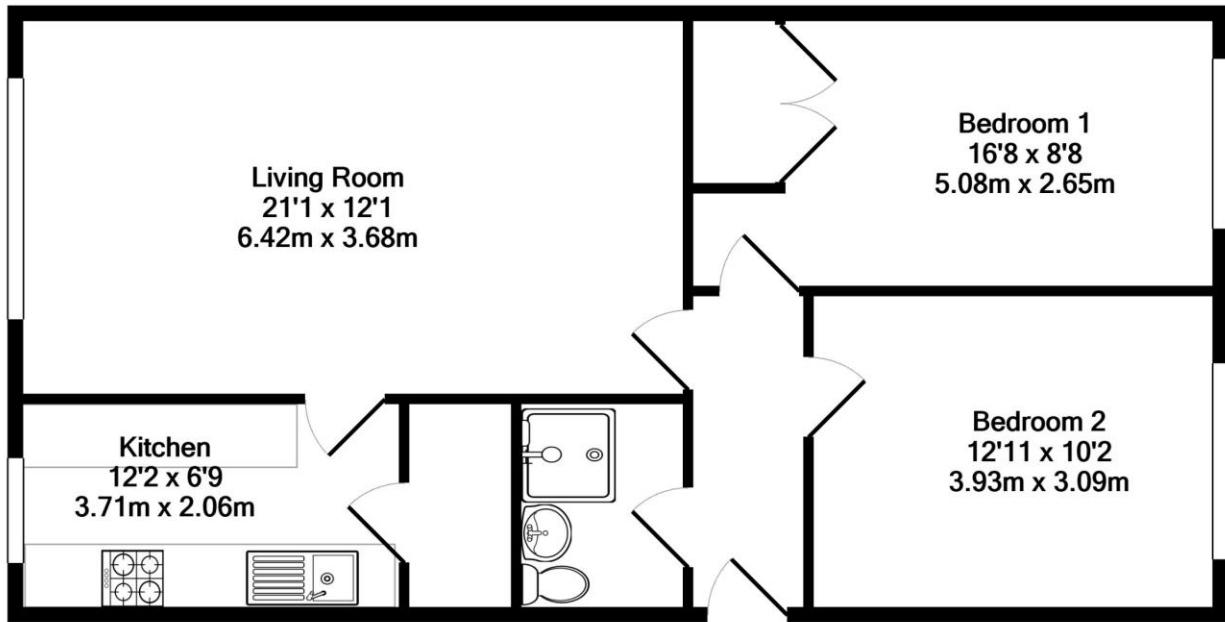




DKH



DKH



TOTAL APPROX. FLOOR AREA 711 SQ.FT. (66.0 SQ.M.)

Whilst every attempt has been made to ensure the accuracy of the floor plan contained here, measurements of doors, windows, rooms and any other items are approximate and no responsibility is taken for any error, omission, or mis-statement. The services, systems and appliances shown have not been tested and no guarantee as to their operability or efficiency can be given. Total floor areas will include any garage(s) where applicable.

Made with Metropix ©2023