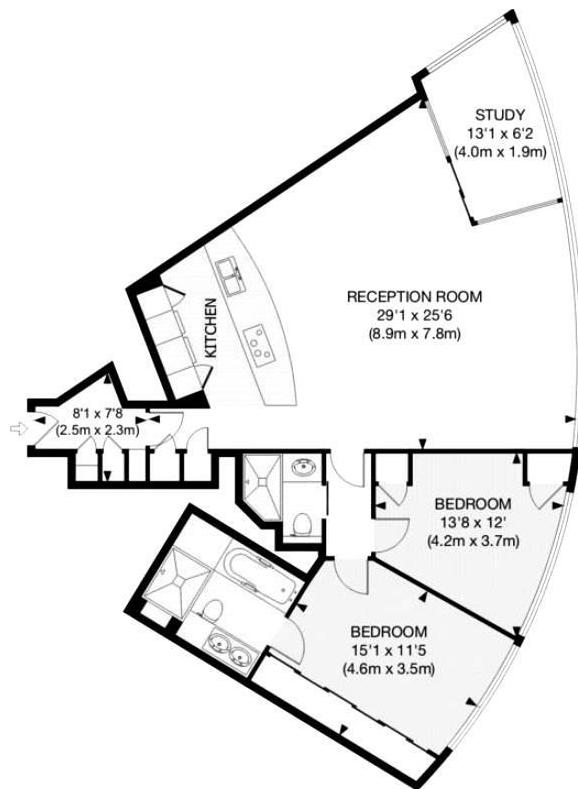


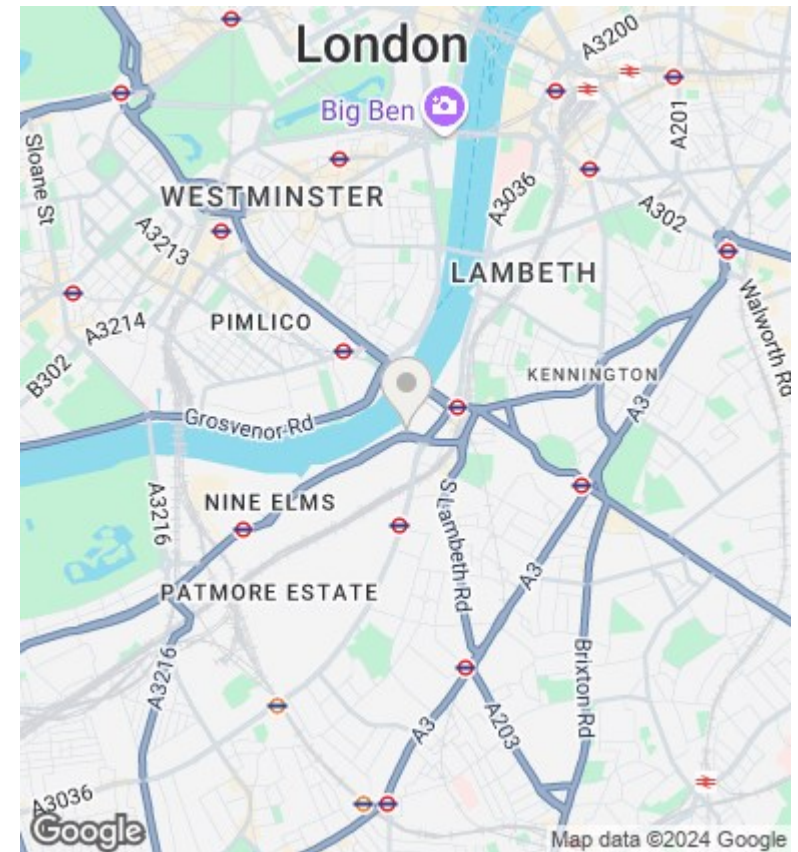
The Tower, 1 St. George Wharf, Vauxhall, London SW8 2DU

£1,000,000

- River Views
- Open-Plan Kitchen
- Fitness and Spa
- Parking Included
- Spacious Double Bedrooms
- 24/7 Concierge
- Private Cinema Access
- Elegant Marble Bathrooms
- Exclusive Lifestyle
- Prime London Location



APPROX. GROSS INTERNAL FLOOR AREA 1075 SQ FT / 100 SQ M



Viewings

Viewings by arrangement only.
Call 02077225022 to make an appointment.

Council Tax Band

H

EPC Rating:

B

Energy Efficiency Rating		
	Current	Potential
Very energy efficient - lower running costs		
(92 plus) A		
(81-91) B	84	86
(69-80) C		
(55-68) D		
(39-54) E		
(21-38) F		
(1-20) G		
Not energy efficient - higher running costs		
England & Wales	EU Directive 2002/91/EC	