



Sylvan Road, SE19 | Offers Over £350,000

02087029333

crystalpalace@pedderproperty.com

pedder
We live local



In General

- Recently upgraded throughout
- No onward chain
- Split level maisonette
- Two double bedrooms
- Private entrance
- Balcony
- Quiet location
- Nearby parkland

In Detail

A light and bright two double bedroom split level maisonette forming part of a quiet, conveniently positioned development in Crystal Palace.

This spacious property has been completely upgraded throughout to offer an immediately enjoyable new home. The accommodation is accessed via a private entrance and features a smart white high gloss handle-less kitchen with integrated appliances and plenty of work and storage space - ideal for those who enjoy cooking. The reception room extends to 16ft and boasts recently replaced sliding doors to a balcony which provides a pleasant area to relax and unwind. Upstairs there two generously proportioned bedrooms (both with fitted storage) and a beautifully finished bathroom with premium fittings. Further benefits include new double glazing throughout (triple glazing to the front bedroom), new radiators and boiler which operates on a Hive system, new carpets, a recent rewire, and no onward chain.

Sylvan Road works well for access to the Triangle at the centre of town and is primarily served by both Crystal Palace and Norwood Junction rail links.

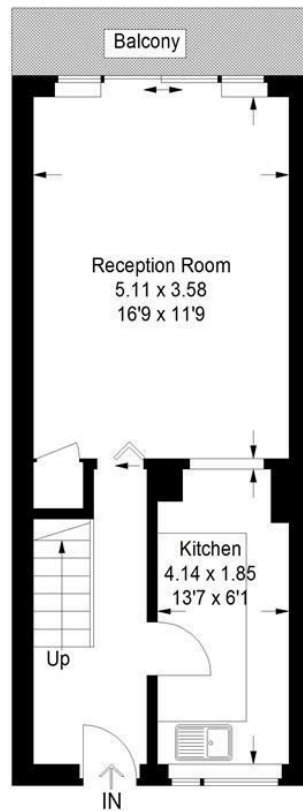
EPC: C | Council Tax Band: C | Lease: 957 years remaining | SC: TBC | GR: £15.00 pa | BI: Incl in SC



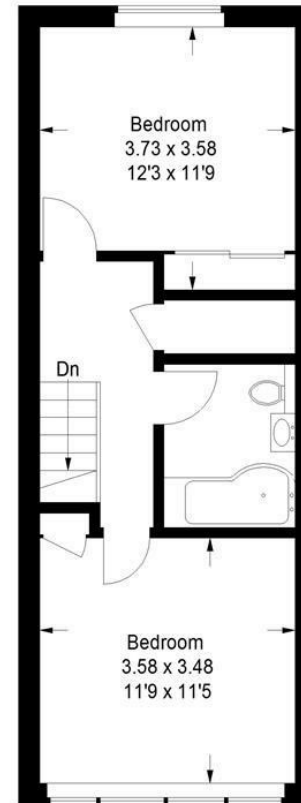
Floorplan

Sylvan Hill, SE19

Approximate Gross Internal Area
72.7 sq m / 783 sq ft

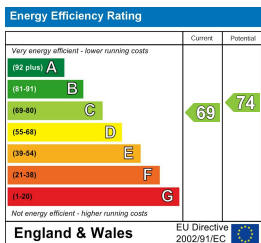


First Floor



Second Floor

Copyright www.pedderproperty.com © 2024
These plans are for representation purposes only as defined by RICS - Code of Measuring Practice. Not drawn to Scale. Windows and door openings are approximate. Please check all dimensions, shapes and compass bearings before making any decisions reliant upon them.



Pedder Property Ltd trading as Pedder for themselves and for the vendor/landlord of this property whose agents they are, give notice that (1) these particulars do not constitute any part of an offer or contract, (2) all statements contained within these particulars are made without responsibility on the part of Pedder or the vendor/landlord, (3) whilst made in good faith, none of the statements contained within these particulars are to be relied upon as a statement of representation or fact, (4) any intending purchaser/tenant must satisfy him/herself by inspection or otherwise as to the correctness of each of the statements contained within these particulars, (5) the vendor/landlord does not make or give either Pedder or any person in their employment any authority to make or give representation or warranty whatsoever in relation to this property.