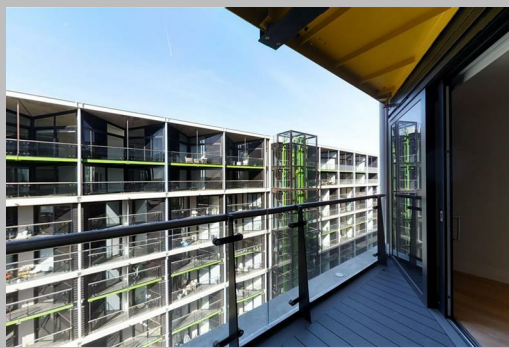


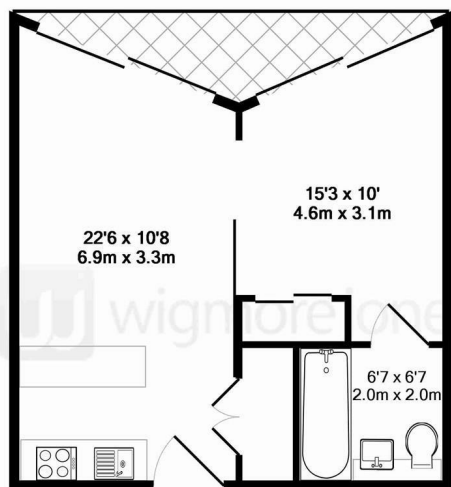
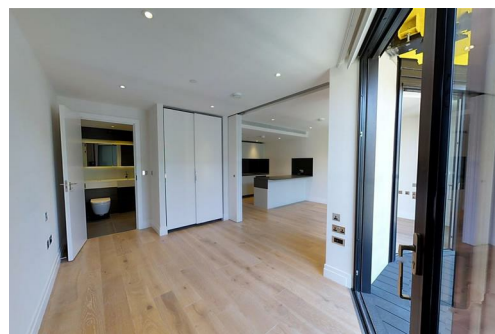
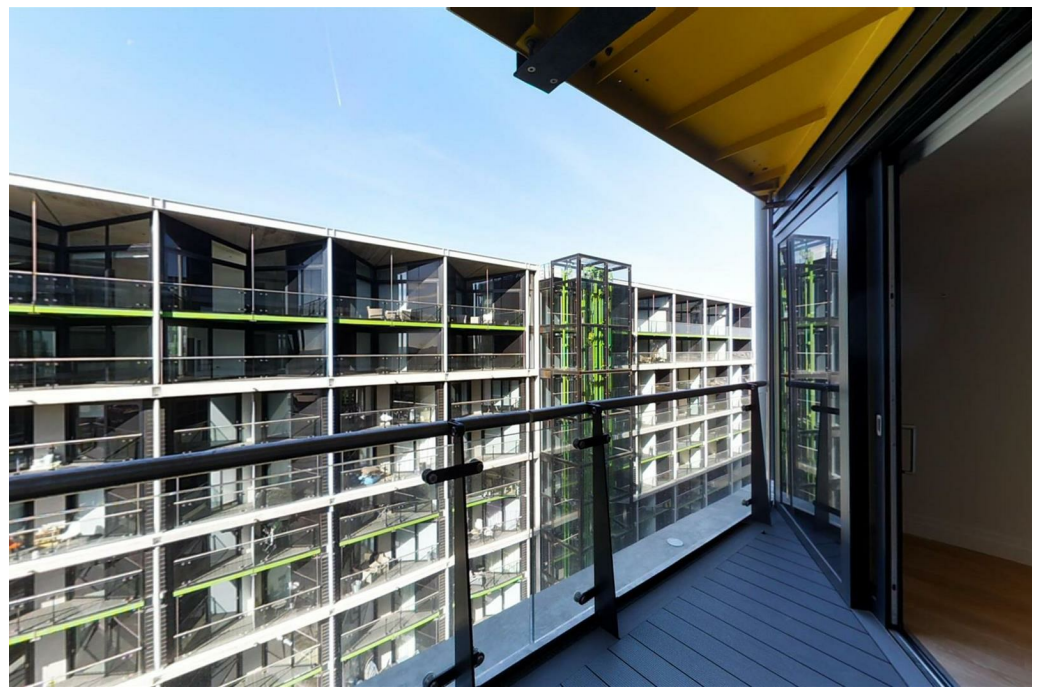
**Wigmore Jones Ltd**  
**Wigmore Jones - Sales**  
Foundry Building, 2 Smiths Square  
77 Fulham Palace Road  
London  
W6 8AF  
**Contact**  
0207 118 8484  
hello@wigmorejones.com  
www.wigmorejones.com

**Three Riverlight Quay**  
Nine Elms  
London  
SW11 8AY



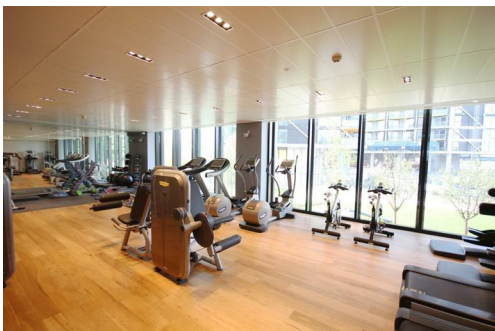
# Three Riverlight Quay

£635,000



Total Approx. Floor Area 425 Sq.Ft. (39.5 Sq.M.)

Whilst every attempt has been made to ensure the accuracy of the floor plan contained here, measurements of doors, windows, rooms and any other items are approximate and no responsibility is taken for any error, omission, or mis-statement. This plan is for illustrative purposes only and should be used as such by any prospective purchaser. The services, systems and appliances shown have not been tested and no guarantee as to their operability or efficiency can be given  
Made with Metropix ©2014



## Local Authority

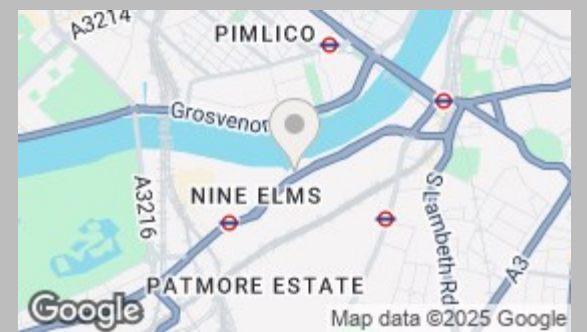
Wandsworth Borough Council

## Council Tax Band

E

## Directions

Energy Efficiency Rating		Current	Potential
Very energy efficient - lower running costs			
(92 plus) A		84	84
(81-91) B			
(69-80) C			
(55-68) D			
(39-54) E			
(21-38) F			
(1-20) G			
Not energy efficient - higher running costs			
England & Wales		EU Directive 2002/91/EC	



**Agents Note:** Whilst every care has been taken to prepare these particulars, they are for guidance purposes only. All measurements are approximate and are for general guidance purposes only and whilst every care has been taken to ensure their accuracy, they should not be relied upon and potential buyers/tenants are advised to recheck the measurements