



Devonhurst Place, London, W4 4JB

Guide Price £850,000

**WHITMAN & CO.**

SALES · LETTINGS · COMMERCIAL

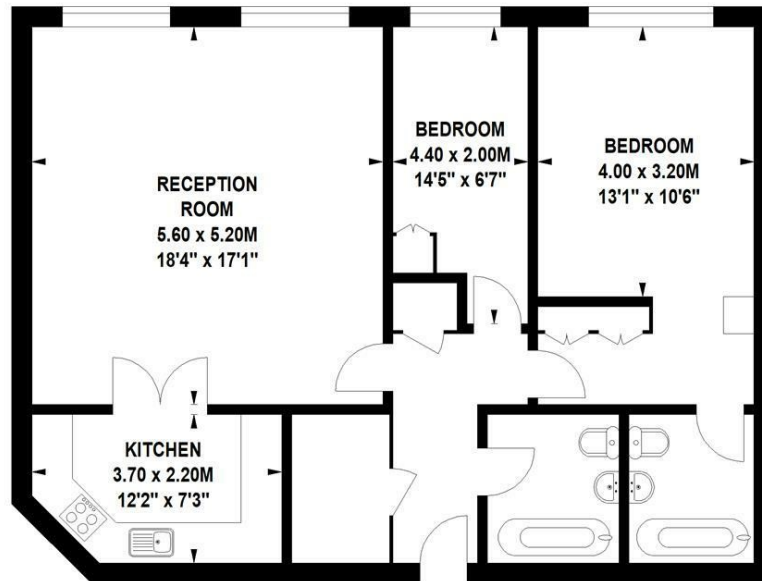
- Penthouse apartment
- Sought after Victorian development
- Underground parking
- Gated entrance with concierge
- Communal gardens
- Large roof terrace

Tenure - Leasehold with Share of Freehold  
 Lease length - 950+ years  
 Ground rent - Peppercorn  
 Maintenance cost - £5424 pa  
 Local authority - Hounslow  
 Council tax - Band F

## Devonhurst Place, Heathfield Terrace, W4

Approximate gross internal area

90.88 sq m / 977 sq ft



Fifth Floor

Not to scale, for guidance only and must not be relied upon as a statement of fact.  
 All measurements and areas are approximate only

## THE PROPERTY

Rarely available two bedroom penthouse apartment set within this historic Victorian Warehouse ideally situated just south of Chiswick High Road. Comprising a master bedroom with luxury ensuite, second double bedroom, 18' reception room, fully integrated kitchen, extensive built in storage, gated entrance with concierge, secure underground parking, communal gardens, large roof terrace and a feature central vaulted atrium with automatic lifts. Benefitting from 950+ years lease with a share of freehold. Ideally situated moments from Chiswick High Road's shops, cafes and restaurants. Transport links include Turnham Green and Chiswick Park stations, local bus routes and the A4/M4 into and out of London. No chain.

## SITUATION



5-7 Turnham Green Terrace, Chiswick, London, W4 1RG

Tel 020 8747 8800

E-mail [sales@whitmanandco.com](mailto:sales@whitmanandco.com)

Website [www.whitmanandco.com](http://www.whitmanandco.com)



MISREPRESENTATION ACT 1967

Whitman & Co. for themselves and for the vendors give notice that these particulars do not constitute any part of, an offer of contract. All statements contained in these particulars are made without responsibility on the part of Whitman & Co. or the vendor. None of the statements contained in these particulars is to be relied upon as statements or representations of facts. Any intending purchaser must satisfy himself by inspection or otherwise as to the correctness of each of the statements contained in these particulars. The vendor does not make or give, and neither Whitman & Co. or any person in their employment has any authority to make or give, any representation or warranty whatever in relation to the property.