

Fletcher Road, London, W4 5AT

£750,000

**WHITMAN & CO.**

SALES · LETTINGS · COMMERCIAL



- 1000sqft Split-level apartment
- Full width kitchen/reception room
- Close to a number of transport links
- Private 20' roof terrace
- Three beds/two baths
- Built-in and eaves storage

Tenure - Leasehold with share of freehold  
 Lease length - 996 years  
 Ground rent - Peppercorn  
 Maintenance costs - £358 pa  
 Local authority - Ealing  
 Council tax - Band E

## THE PROPERTY

A spacious and light three bed/two bath maisonette with private roof terrace and approximately 1000sqft of accommodation located on this residential street close to shops and transport. The split-level flat comprises a full-width kitchen/reception room with bay window, three good size bedrooms, bathroom, shower room, sunny 20ft roof terrace, built-in storage, eaves storage, and share in the freehold. Fletcher Road is within a short walk of South Acton (Overground) and Chiswick Park and Acton Town (tube) stations, local bus routes and offers quick access to the A4/M4 and A40/M40 for routes in and out of London. Chiswick High Road and Acton High Street's shops, cafes and restaurants are also close by.

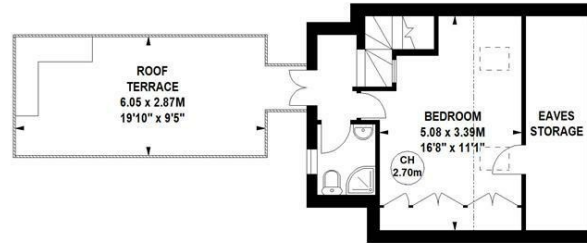
### Fletcher Road, W4

Approximate gross internal area

93.09 sq m / 1002 sq ft  
 (Including Eaves Storage)

Eaves Storage  
 7.71 sq m / 83 sq ft

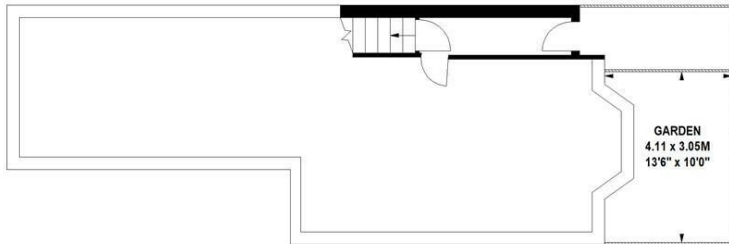
Key :  
 CH - Ceiling Height



Second Floor



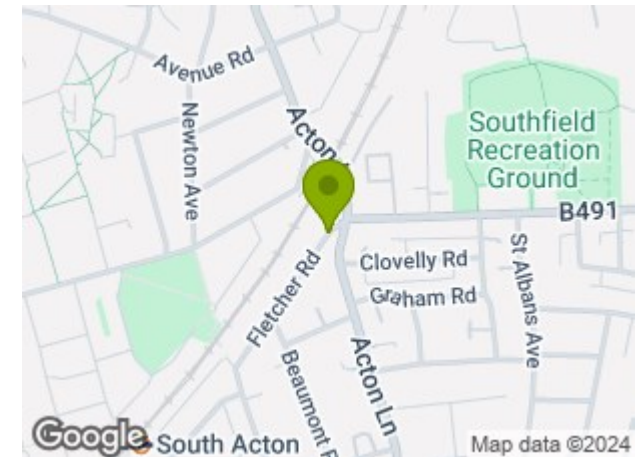
First Floor



Ground Floor  
 Entrance

Not to scale, for guidance only and must not be relied upon as a statement of fact.  
 All measurements and areas are approximate only

## SITUATION



5-7 Turnham Green Terrace, Chiswick, London, W4 1RG

Tel 020 8747 8800

E-mail [sales@whitmanandco.com](mailto:sales@whitmanandco.com)

Website [www.whitmanandco.com](http://www.whitmanandco.com)



MISREPRESENTATION ACT 1967

Whitman & Co. for themselves and for the vendors give notice that these particulars do not constitute any part of, an offer of contract. All statements contained in these particulars are made without responsibility on the part of Whitman & Co. or the vendor. None of the statements contained in these particulars is to be relied upon as statements or representations of facts. Any intending purchaser must satisfy himself by inspection or otherwise as to the correctness of each of the statements contained in these particulars. The vendor does not make or give, and neither Whitman & Co. or any person in their employment has any authority to make or give, any representation or warranty whatever in relation to the property.