

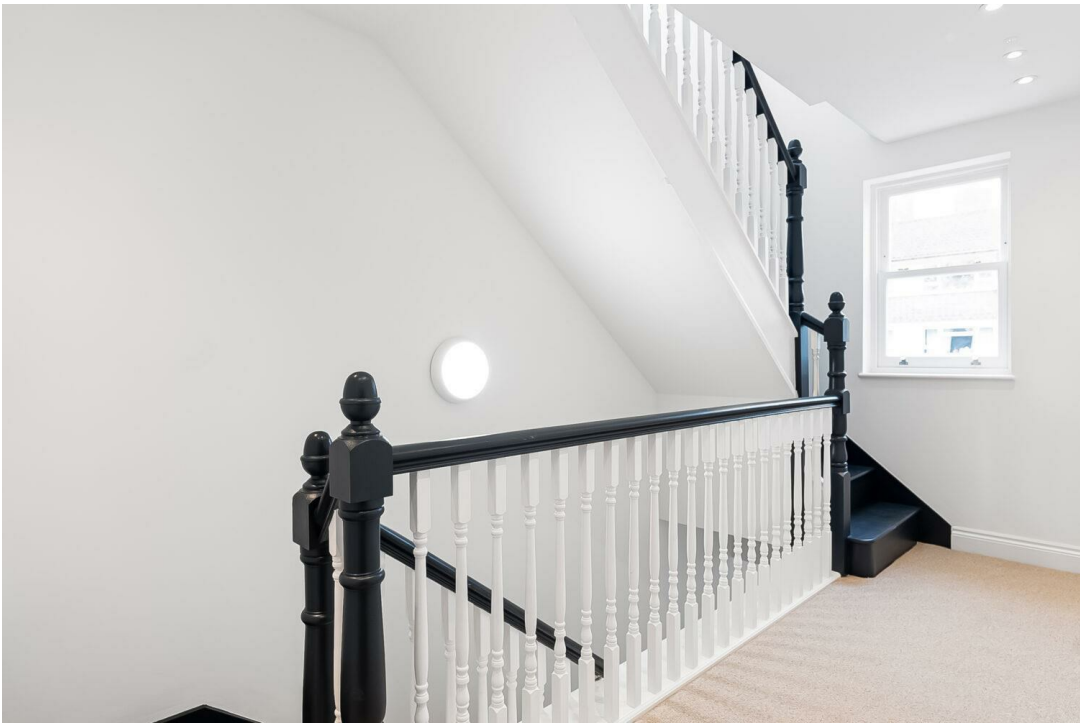


2 Exbury Road, SE6 | £675,000

02087029999

development@pedderproperty.com

pedder
NEW HOMES

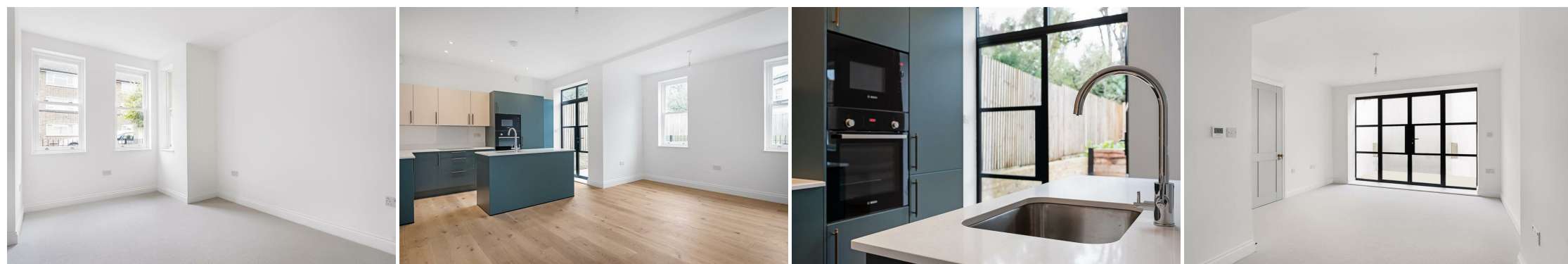


In General

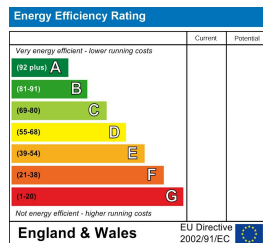
- ****DEVELOPER INCENTIVES AVAILABLE****
- 10 Year Structural Warranty
- Bosch Appliances
- Timber Sash Windows
- Private Garden
- Beautiful Victorian Villa
- Hacker German Kitchens
- Underfloor Heating
- Close to shops and restaurants
- Direct trains to Central London & beyond

In Detail

A stunning new development of four beautiful apartments set within a converted Victorian Villa
The Development



Floorplan



Pedder Property Ltd trading as Pedder for themselves and for the vendor/landlord of this property whose agents they are, give notice that (1) these particulars do not constitute any part of an offer or contract, (2) all statements contained within these particulars are made without responsibility on the part of Pedder or the vendor/landlord, (3) whilst made in good faith, none of the statements contained within these particulars are to be relied upon as a statement of representation or fact, (4) any intending purchaser/tenant must satisfy him/herself by inspection or otherwise as to the correctness of each of the statements contained within these particulars, (5) the vendor/landlord does not make or give either Pedder or any person in their employment any authority to make or give representation or warranty whatsoever in relation to this property.