



Carlton Road, East Sheen, London, SW14 7RJ

RP
RANDALL PRICE
RU



An exceptional 4 bedroom, period family home of approximately 1,600 sqft with a 47' landscaped garden.

Features

Semi-detached	4 Bedrooms
Superb kitchen / dining room	2 Bathrooms
Reception room	47' landscaped garden
W.C	1,614 sqft

About the property

Having been comprehensively extended and refurbished circa 5 years ago to a high standard, this exceptional period family home now provides approximately 1,600 sqft of superbly appointed accommodation over three floors. Situated in a highly desirable residential area, within close proximity to Mortlake station and all of the amenities of the vibrant East Sheen village.

At heart of the home is a stylish and spacious kitchen/dining/living area, with floor to ceiling glass doors that open onto a landscaped 47' garden. The ground floor boasts a wealth of practical but aesthetically enjoyable choices for family life; under floor heating to entire ground floor, w.c/laundry room and extensive bespoke built in joinery .

To the first floor are 3 bedrooms and a sumptuous family bathroom. The spacious converted attic boasts the principal bedroom with a sumptuous ensuite shower room, ample built in cupboard space and walk-in-wardrobe area.

Carlton Road is arguably one of the finest and most desirable roads within East Sheen and is within walking distance of both the River Thames and Richmond Park. A superb family home that is well-placed to enjoy all that this corner of South West London has to offer.

In addition to Richmond Park, East Sheen has several other green spaces, including Palewell Common and Sheen Common, both of which offer opportunities for outdoor activities and relaxation.

East Sheen has a thriving high street, which is home to a range of shops, cafes, restaurants, and pubs. There are also several supermarkets, including Waitrose and Tesco, making it easy for residents to do their weekly shopping. The area is known for its excellent schools, both state and private. Some of the top-rated schools in East Sheen include Sheen Mount Primary School, East Sheen Primary School, Tower House and St. Paul's School.

Transportation links in East Sheen are good, with Mortlake train station, several bus routes serving the area, and Richmond station providing access to the London Underground, Overground, and National Rail services.

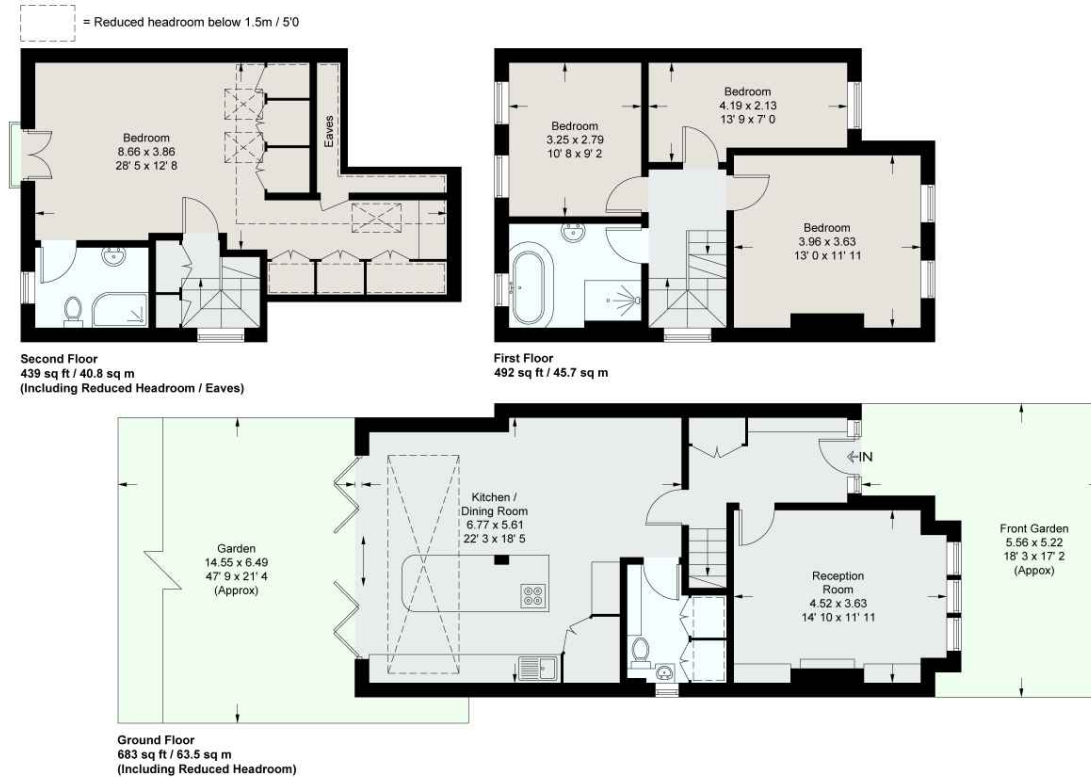
Overall, East Sheen is a desirable location for those seeking a suburban lifestyle with easy access to central London and abundant green spaces.





Carlton Road

Approximate Gross Internal Area = 1614 sq ft / 150 sq m
(Including Reduced Headroom / Eaves)



This plan is not to scale and must be used as layout guidance only. All measurements and areas are approximate and should not be relied upon to provide accurate information. This plan must not be relied upon when making property valuations, design considerations or any other such relevant decisions. We accept no responsibility or liability (whether in contract, tort or otherwise) in relation to any loss whatsoever arising from or in connection with any use of this plan or the adequacy, accuracy or completeness of it or any information within it.



- 0208 087 3545
- info@randallprice.co.uk
- www.randallprice.co.uk
- Suite 410, Parkway house, Sheen Lane, London, SW14 8LS

Brochure by fourwalls-group.com