



8 Maidstone Road, Norwich

£190,000 Leasehold

Experience city living at its finest in this contemporary, two bedroom apartment. Featuring an open plan reception room with a breakfast bar and Juliette balcony, two double bedrooms, an ensuite to master and a bright and airy feel throughout the apartment. Perfect for first time buyers or investors looking to acquire a turn-key property in a prime location.

Experience city sophistication at its finest in the heart of Norwich city centre. Enjoy easy access to boutique shops, cafes, and cultural landmarks, all just steps away from your doorstep. With the train station nearby, commuting is a breeze, making every journey a seamless adventure. Discover your dream home in Norwich city centre today.



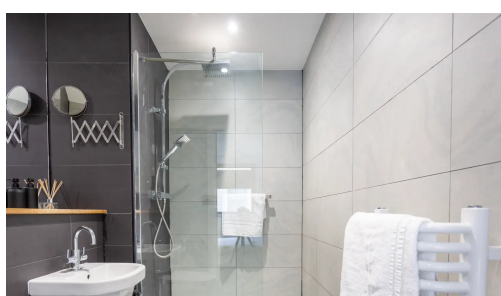
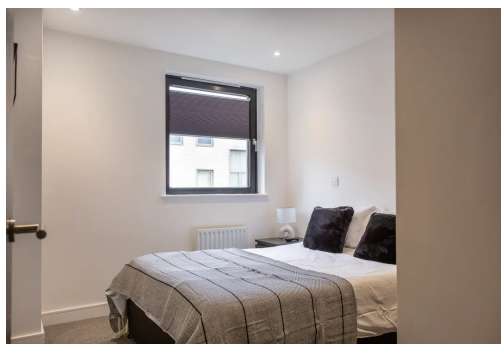
AGENTS NOTE

We understand the property will be sold leasehold 117 years remaining on the lease and connected to all mains services.

Ground rent - £125 P/A.

Maintenance charge - £250 P/A.

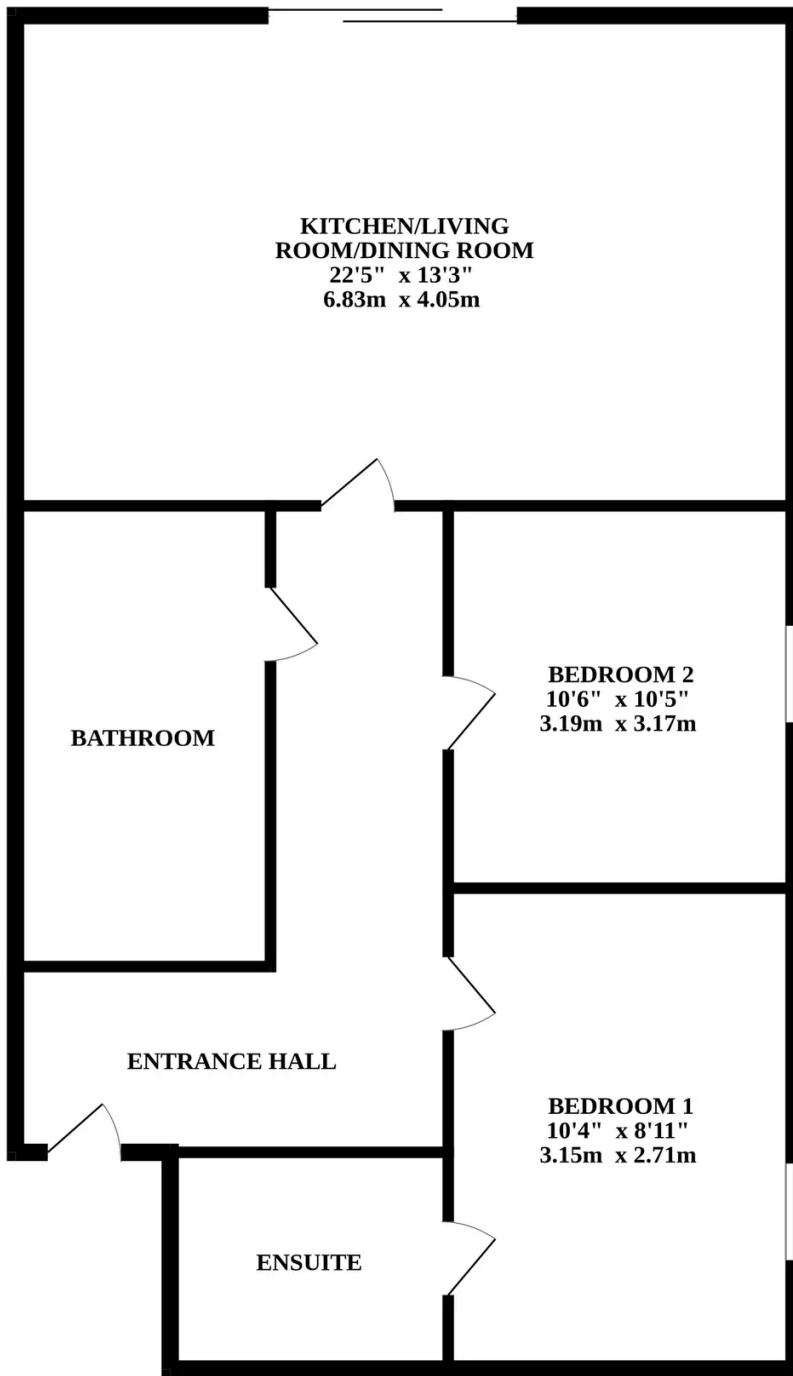
Council tax band - B.



Introducing this exquisite two bedroom apartment offering contemporary living at its finest. Situated in a prime location, this property boasts two double bedrooms, with the master bedroom benefiting from an ensuite bathroom. The open plan reception room features a stylish Juliette balcony, flooding the space with natural light and offering a tranquil retreat. The modern kitchen area is complete with a breakfast bar, perfect for casual dining and entertaining guests. The spacious hallway offers access into the main bathroom suite, providing a three piece suite.

This property offers a secure entry system for peace of mind and is just a short walk into the bustling city centre, providing easy access to amenities, entertainment, and transport links. The apartment is tastefully finished with a contemporary flair throughout, showcasing quality craftsmanship and attention to detail. Don't miss the opportunity to make this exceptional property your new home where convenience meets luxury living. Schedule a viewing today to experience the epitome of city elegance.





Whilst every attempt has been made to ensure the accuracy of the floorplan contained here, measurements of doors, windows, rooms and any other items are approximate and no responsibility is taken for any error, omission or mis-statement. This plan is for illustrative purposes only and should be used as such by any prospective purchaser. The services, systems and appliances shown have not been tested and no guarantee as to their operability or efficiency can be given.
Made with Metropix ©2024

