



Dulwich Village, SE21 | £2,400 Per Month

02087028111

dulwichvillage@pedderproperty.com

pedder
We live local

In General

- Two double bedrooms
- Bright and spacious open plan living / kitchen
- Integrated appliances
- Modern bathroom
- Unfurnished
- Available Mid October

In Detail

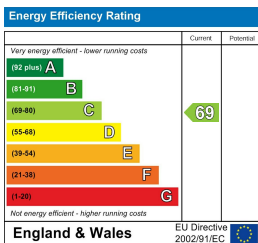
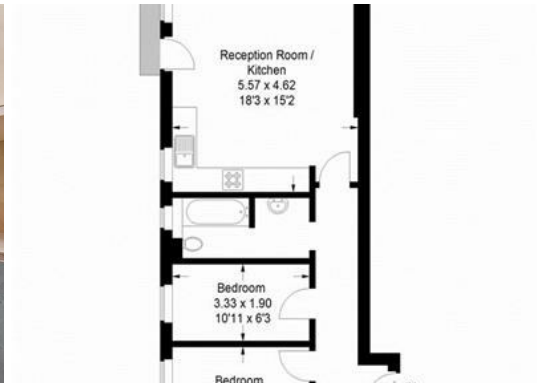
This apartment has a light and spacious open plan living kitchen space with integrated appliances, a double bedroom, bathroom and storage.

Built with modern living in mind this contemporary designed flat has underfloor heating throughout, high quality fittings and low energy lighting.

Located in Dulwich Village, you are on the doorstep to a number of independent cafes, restaurants and shops and a short walk to both Herne Hill and East Dulwich. North Dulwich Station is under a 10 minute walk with services into London Bridge.

Unfortunately no pets are permitted in this development.

EPC: C | Council Tax Band: D | Holding Deposit: £553.85 | Security Deposit: £2,769.23 | Unfurnished | Available Mid October | Call Pedder Dulwich Village Lettings on 0208 702 8111 to view



Pedder Property Ltd trading as Pedder for themselves and for the vendor/landlord of this property whose agents they are, give notice that (1) these particulars do not constitute any part of an offer or contract, (2) all statements contained within these particulars are made without responsibility on the part of Pedder or the vendor/landlord, (3) whilst made in good faith, none of the statements contained within these particulars are to be relied upon as a statement of representation or fact, (4) any intending purchaser/tenant must satisfy him/herself by inspection or otherwise as to the correctness of each of the statements contained within these particulars, (5) the vendor/landlord does not make or give either Pedder or any person in their employment any authority to make or give representation or warranty whatsoever in relation to this property.

