



Room 3 4 Longworth Road, Jericho, Oxford, OX2 6RA

*** ONE BEDROOM AVAILABLE IN HOUSE SHARE, utilities are £140 fixed each month ***

Property Particulars

Location: Heart of Jericho

Type: Large 6-bedroom shared house

Availability: 1 room available

Bills: £140.00 per calendar month (bills exclusive)

Bedrooms: All double bedrooms with space for study desks

Bathrooms: One bathroom, one shower room, and an additional WC

Living Areas: Modern living area with conservatory

Kitchen: Well-maintained kitchen

Heating: Gas central heating

Condition: Well maintained

Recommendation: Viewings are highly recommended

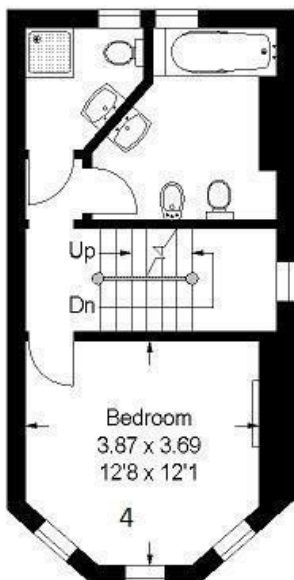
Summary

A spacious and well-maintained six-bedroom shared house located in the heart of Jericho. This property features a

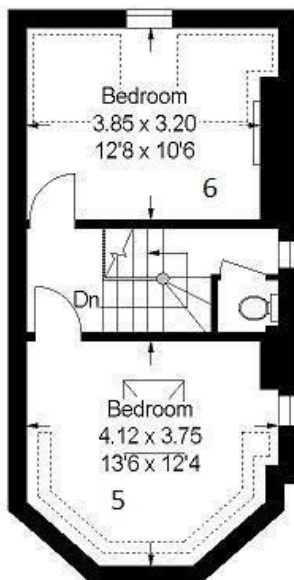
- 1 Bedroom
- 1 Reception
- 2 Bathrooms
- Jericho
- Furnished Property
- House share

£925 PCM

Longworth Road, Jerico, Oxford

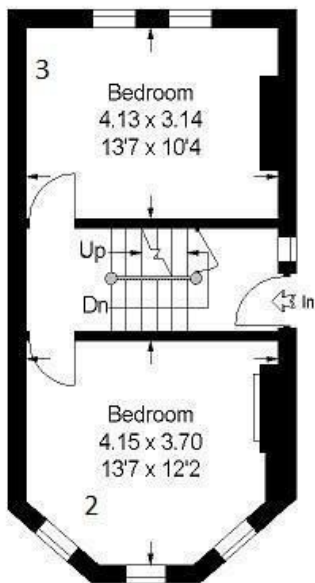


First Floor

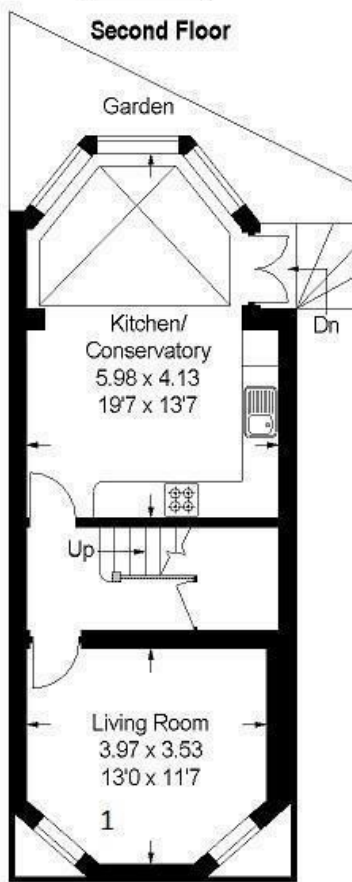


Second Floor

Approximate Gross Internal Area :-
149 sq m / 1603 sq ft



Raised Ground Floor



Lower Ground Floor

Reduced Headroom Below 1.50m / 5'0"

FLOORPLANZ © 2007
01483 755510 Ref 27315

This illustration is for identification purposes only. Measured & drawn in accordance with RICS / PIMA guidelines. Not drawn to scale, unless stated. Dimensions shown are to the nearest 7.5 cm / 3" & are through cupboard / wardrobes to wall surfaces where possible or where indicated by arrow heads.

Whilst every care is taken in the preparation of this plan, please check all dimensions, shapes & compass bearings before making any decisions reliant upon them.

Energy Efficiency Rating		Current	Potential
Very energy efficient - lower running costs			
(92 plus) A			83
(81-91) B			
(69-80) C			
(55-68) D			
(39-54) E		60	
(21-38) F			
(1-20) G			
Not energy efficient - higher running costs			
England & Wales		EU Directive 2002/91/EC	

Environmental Impact (CO ₂) Rating		Current	Potential
Very environmentally friendly - lower CO ₂ emissions			
(92 plus) A			79
(81-91) B			
(69-80) C			
(55-68) D			
(39-54) E		51	
(21-38) F			
(1-20) G			
Not environmentally friendly - higher CO ₂ emissions			
England & Wales		EU Directive 2002/91/EC	