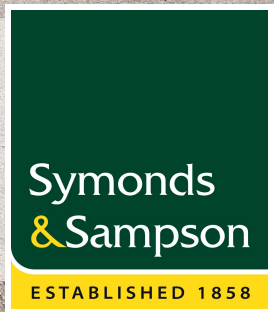




'Ferndown Cattery' Ringwood Road, Ferndown

A large five bedroom, three bathroom detached family home benefitting from having a thriving Cattery business with large gardens, ample parking and excellent potential.

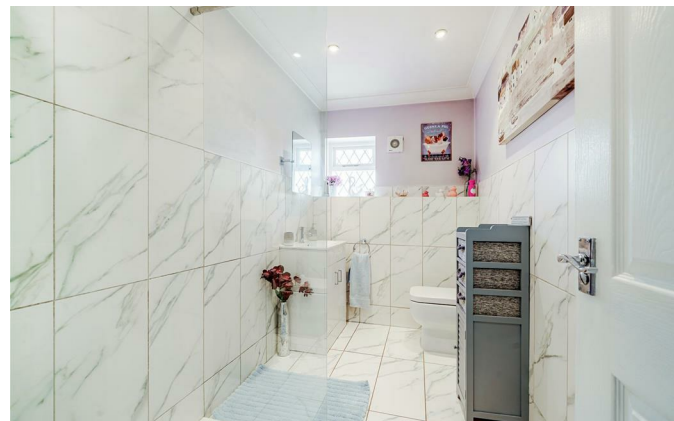
Guide Price
£650,000
Freehold



Ringwood Road, Ferndown BH22 9AY

- A desirable home and income with a large garden and established business
 - Located in a popular and highly visible location
 - Only a short, level stroll to the heart of Ferndown centre
- Parking for 10 cars or great scope for a front garden
 - Four bedrooms, three bath/shower rooms, office
 - An array of versatile living and flexible rooms
- Impressive gardens coupled with a thriving business
 - An established Cattery with all facilities in place

Viewing strictly by appointment
Symonds & Sampson
01202 843190





A large entrance hall with doors to all principal ground floor rooms. There are two storage cupboards and the stairs which lead to the first floor, one of which has plumbing for W/C facilities.

A door leads into the sitting room, which has a wood beam effect ceiling, dual aspect, and a brick fireplace and hearth which as the focal point of the room. A square arch with sliding double doors lead to the kitchen/breakfast room. The kitchen also features a beam effect ceiling and a dual aspect, has tiled floor with underfloor heating, and offers an extensive range of cream wall and base units with solid granite work surface and splashbacks over. There is an inset Belfast sink and a feature exposed brick chimney breast with 5 burner dual fuel range oven with dual ovens and grill and extractor hood over, and space and plumbing for a washing machine and dishwasher.

A glazed stable door leads to a small conservatory which is currently being used as a study for the business.

There are three double bedrooms on the ground floor, one of

which offers an ensuite bathroom, and one of which is currently being used as a snug. A separate shower room also features on the ground floor, with a modern white suite comprising a double shower cubicle.

Stairs from the entrance hall lead to the first floor landing where doors lead to two double bedrooms which both them lead into a 'Jack & Jill' ensuite bathroom. The bathroom comprises a modern white suite featuring a free-standing bath with standpipe mixer tap, wash hand basin with vanity unit, and a WC, and heated towel rail.

To the front of the property there is a large driveway suitable for up to 8/10 vehicles with side pedestrian access to the left hand side which leads to the business. To the right hand side is access to the rear via secure gates. To the rear of the property is a patio area abutting an area of lawn which is enclosed by fencing, and is secluded by mature trees and shrubs which is ideal for al-fresco dining. The remainder of the rear is laid out for the thriving Cattery Business. However, if the cattery were removed, the garden would offer a superb size, privacy and seclusion.

The Business

The boarding cattery built to FAB standards opened in 2008 and has since been upgraded to conform to the new licencing requirements gaining a coveted 5 star. Enjoying a prominent main road frontage in an easily accessible location the facilities are surrounded by massive wealthy catchment area. A well run business with an excellent and enviable reputation. The Cattery side has a separate kitchen/food prep area, a grooming parlour, double and single bays, removable panels in the bays for winter and summer heat/ventilation. Timed heat-tubes, as well as ample storage coupled with its own business entrance and office. Licensed to Board 48 Cats Turnover: About £80,000

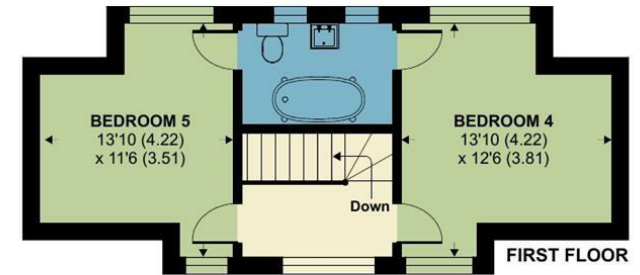
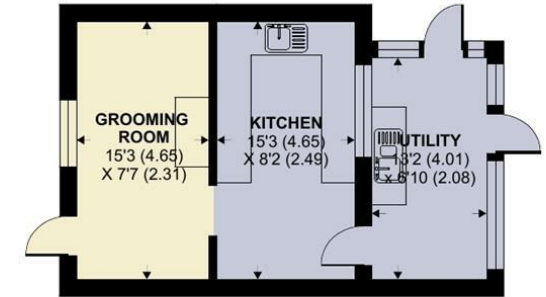
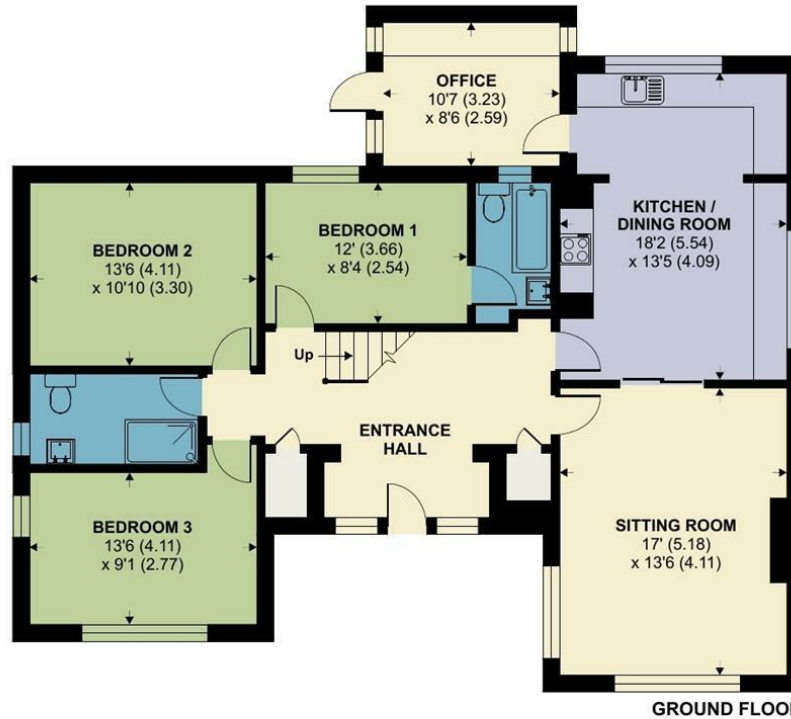
Services

All mains services
EPC BAND - C
Council Tax Band - E
Ofcom reports good broadband and mobile service to the area.

Ringwood Road, Ferndown

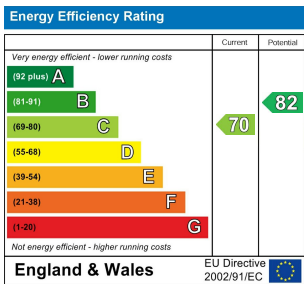
Approximate Area = 1700 sq ft / 157.9 sq m
 Outbuilding = 356 sq ft / 33.1 sq m
 Total = 2056 sq ft / 191 sq m

For identification only - Not to scale



Directions

From Ferndown and the central crossroads at the firestation, head towards Ringwood. Proceed towards the tricketts Cross roundabout or just before Golf Links Road, where this property can be found on the right hand side. The property is distinct due to the iron cat symbols on the front wall.



Floor plan produced in accordance with RICS Property Measurement Standards incorporating International Property Measurement Standards (IPMS2 Residential). © nichecom 2024. Produced for Symonds & Sampson. REF: 1097592



Wim/NW/Apr24



01202 843190
 Symonds & Sampson 5 West Street
 Wimborne
 Dorset
 BH21 1JN
 wimborne@symondsandsampson.co.uk

IMPORTANT NOTICE: Symonds & Sampson LLP and their Clients give notice that:

1. They have no authority to make or give any representations or warranties in relation to the property. These particulars do not form part of any offer or contract and must not be relied upon as statements or representations of fact. 2. Any areas, measurements or distances are approximate. The text, photographs and plans are for guidance only and are not necessarily comprehensive. It should not be assumed that the property has all necessary Planning, Building Regulation or other consents, and Symonds & Sampson have not tested any services, equipment, or facilities.

