

## **Devonshire Road, Ipswich, Suffolk, IP3 8AS**

**Offers in excess of: £180,000**

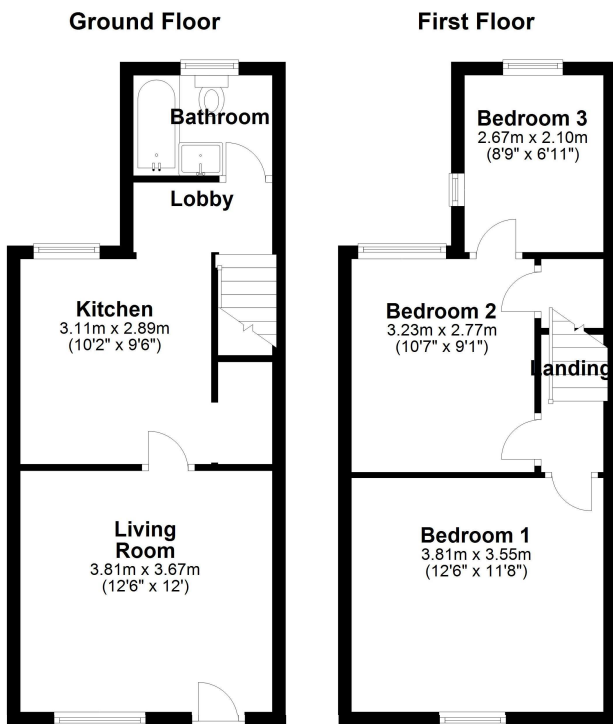


- Mid Terrace House
- Three Bedrooms
- Ground Floor Bathroom
- Ideal First Time / Investment Purchase

This three bedroom mid terrace house, situated towards the desirable east side of Ipswich and falling within the Copleston School catchment (subject to availability), is just a few minutes' walk from the waterfront and university and would make an ideal first time / investment purchase. As agents, we recommend the earliest possible internal viewing to appreciate the accommodation on offer which lounge, kitchen, ground floor family bathroom. and three first floor bedrooms.

The county town of Ipswich offers a range of local amenities including schools, university, shops, doctors, dental surgeries, hospital, two theatres, parks including the popular Orwell Country Park, recreational facilities, and mainline railway station providing direct links to London Liverpool Street Station. The vibrant waterfront has undergone an extensive rebuilding and gentrification programme and now boasts some fashionable bars and restaurants, together with the University of Suffolk.

Council tax band: A



**Disclaimer**

Every attempt has been made to ensure accuracy, however these property particulars are approximate and for illustrative purposes only. They have been prepared in good faith and they are not intended to constitute part of an offer of contract. We have not carried out a structural survey and the services, appliances and specific fittings have not been tested. All photographs, measurements, floor plans and distances referred to are given as a guide only and should not be relied upon for the purchase of any fixture or fittings. Lease details, service charges and ground rent (where applicable) are given as a guide only and should be checked prior to agreeing a sale.