



## 17 Clovelly Drive, Norwich

Guide Price £350,000 - £375,000



# 17 Clovelly Drive

Norwich, Norwich

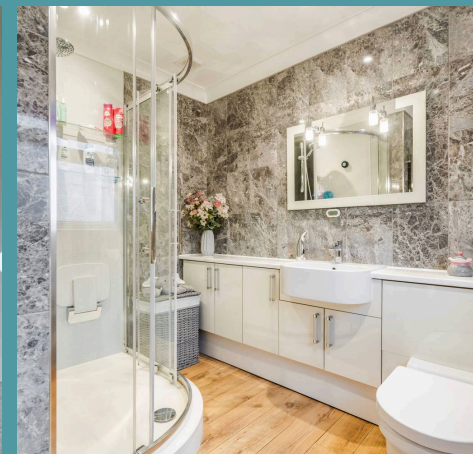
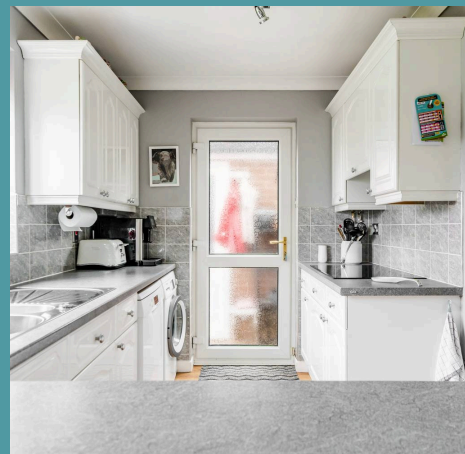
This generously sized detached residence is located in a sought-after suburb just outside the city centre. It boasts stylish, modern bathroom and kitchen suites that enhance the home's contemporary feel. The property features a well-landscaped rear garden, perfect for family gatherings, outdoor activities, or relaxing in the sun. Additionally, the versatile a workshop provides a creative space for all.

## Location

Clovelly Drive in Norwich (NR6) is a peaceful, suburban residential area located around 4 miles north of the city center. It offers convenient access to local amenities, including the Mile Cross Shopping Centre, supermarkets, schools like Mile Cross Primary and Hellesdon High, and green spaces such as Hellesdon Park and Catton Park. The area is well-served by public transport, with bus routes to the city and easy access to major roads like the A140 and A47. It features a mix of detached and semi-detached homes, making it an attractive location for families, with additional amenities like healthcare facilities, local pubs, and dining options nearby.

## Agents Note

We understand the property will be sold freehold connected to all mains services with gas central heating.







## 17 Clovelly Drive

Norwich, Norwich

### The Property

As you step inside, a delightful porch greets you. This leads to a spacious hallway that opens to various areas of the house, including a separate WC, a stylish kitchen, a cosy living room, and a staircase ascending to the first floor.

The kitchen features sleek modern fittings, an induction hob, an electric oven, and convenient plumbing for all your appliances. Adjacent to the kitchen, the living room radiates warmth and light, enhanced by sliding doors that connect the indoor space to the garden, perfect for enjoying the outdoors.

You'll discover three generously sized bedrooms on the first floor, each offering ample natural light and space. A well-appointed shower room awaits, complete with a contemporary vanity unit and a heated towel rail, adding a touch of luxury to your daily routine.

Step outside to the beautifully landscaped rear garden, a true oasis featuring a multi-level patio that invites you to relax, dine, or entertain. The meticulously manicured lawn and inviting gazebo create a picturesque setting for gatherings or quiet moments. Additionally, the garage has been partially converted, providing extra storage solutions while maintaining functionality.

